

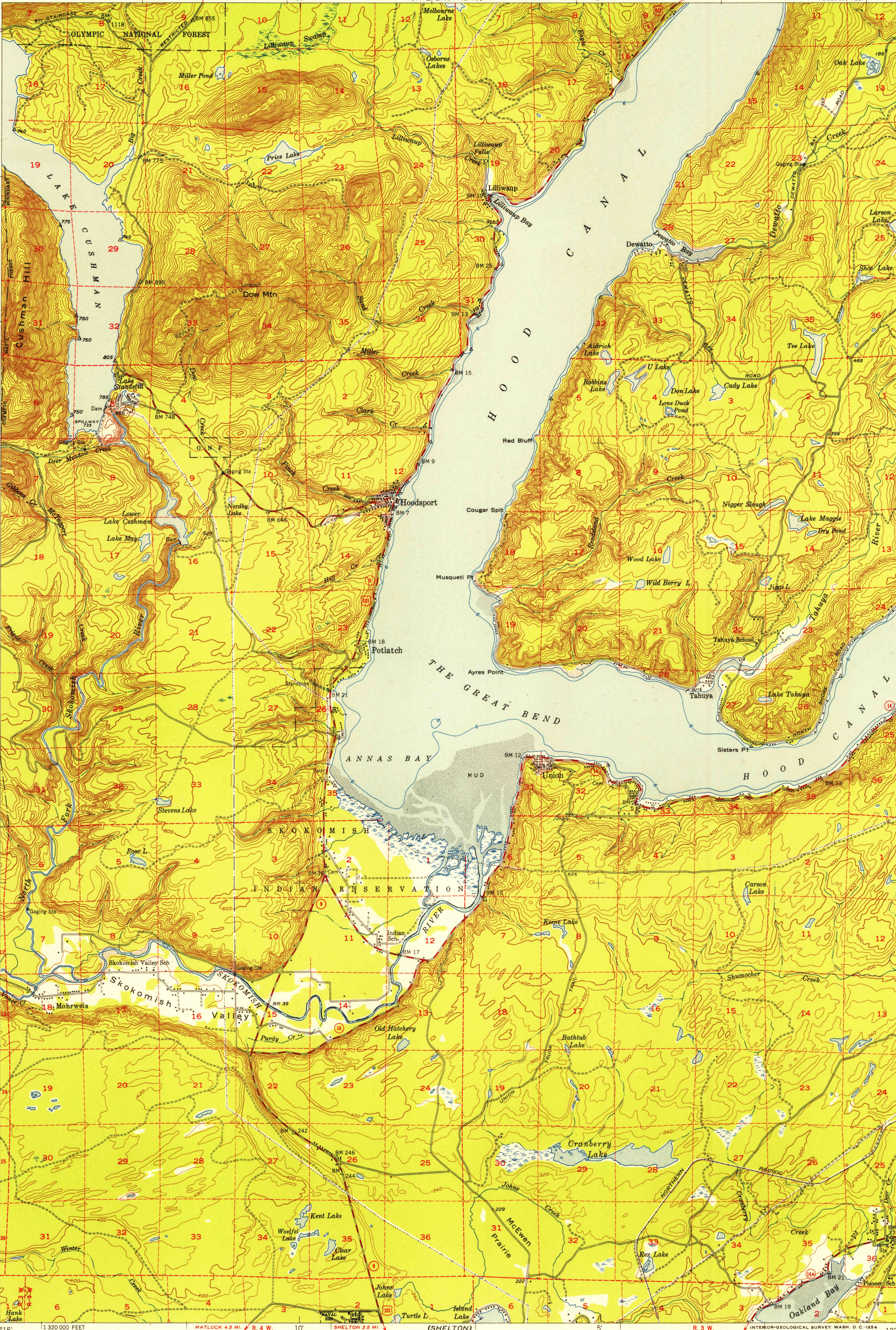
(MT. STEEL)
123°15'
47°30'
6.3 MI. TO U.S. 101 R. 4 W.
10'
5'
BRINNON 17 MI.
ELDON 3.4 MI. R. 3 W.
1380 000 FEET
123°00'
47°30'
14 MI. TO MAYWAY RD.
T. 23 N.
790 000 FEET
T. 22 N.
(MT. TEBO)
25'
123°15'
47°15'
6.3 MI. TO U.S. 101 R. 4 W.
10'
5'
R. 3 W.
SHELTON 3.5 MI.
OLYMPIA 25 MI.
1320 000 FEET
123°00'
47°15'
14 MI. TO WASH. 14
ALLYN 12 MI.
17 MI. TO WASH. 14
T. 21 N.
T. 20 N.
(ELMA)

UNITED STATES
DEPARTMENT OF THE INTERIOR
GEOLOGICAL SURVEY

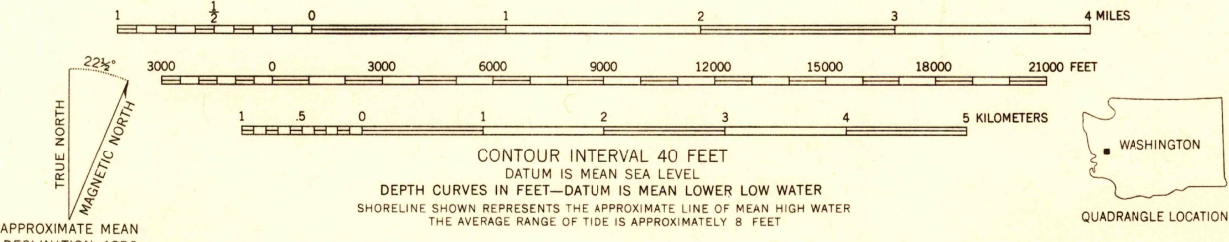
UNITED STATES
DEPARTMENT OF THE ARMY
CORPS OF ENGINEERS
(THE BROTHERS)

POTLATCH QUADRANGLE
WASHINGTON-MASON CO.
15 MINUTE SERIES (TOPOGRAPHIC)

(PT. MISERY)
U.S.G.S.
FILE COPY
TOPOGRAPHIC DIVISION
T. 23 N.
T. 22 N.
T. 21 N.
T. 20 N.
(CLYMA)



Mapped by the Army Map Service
Edited and published by the Geological Survey
Control by USGS, USC&GS, and USCE
Topography from aerial photographs by photogrammetric methods
Aerial photographs taken 1937. Field check & culture revision 1952
Hydrography compiled from USC&GS chart 6460
Polyconic projection. 1927 North American datum
10,000-foot grid based on Washington coordinate system, south zone
Dashed land lines indicate approximate locations



ROAD CLASSIFICATION
Heavy-duty 4 LANE 6 LANE Light-duty
Medium-duty 4 LANE 6 LANE Unimproved dirt
U. S. Route State Route

U.S.G.S.
FILE COPY
TOPOGRAPHIC DIVISION

POTLATCH, WASH.
N4715-W12300/15

USGS
Historical File
Topographic Division

NOV 5 1954

FOR SALE BY U. S. GEOLOGICAL SURVEY, FEDERAL CENTER, DENVER, COLORADO OR WASHINGTON 25, D. C.
A FOLDER DESCRIBING TOPOGRAPHIC MAPS AND SYMBOLS IS AVAILABLE ON REQUEST

2595