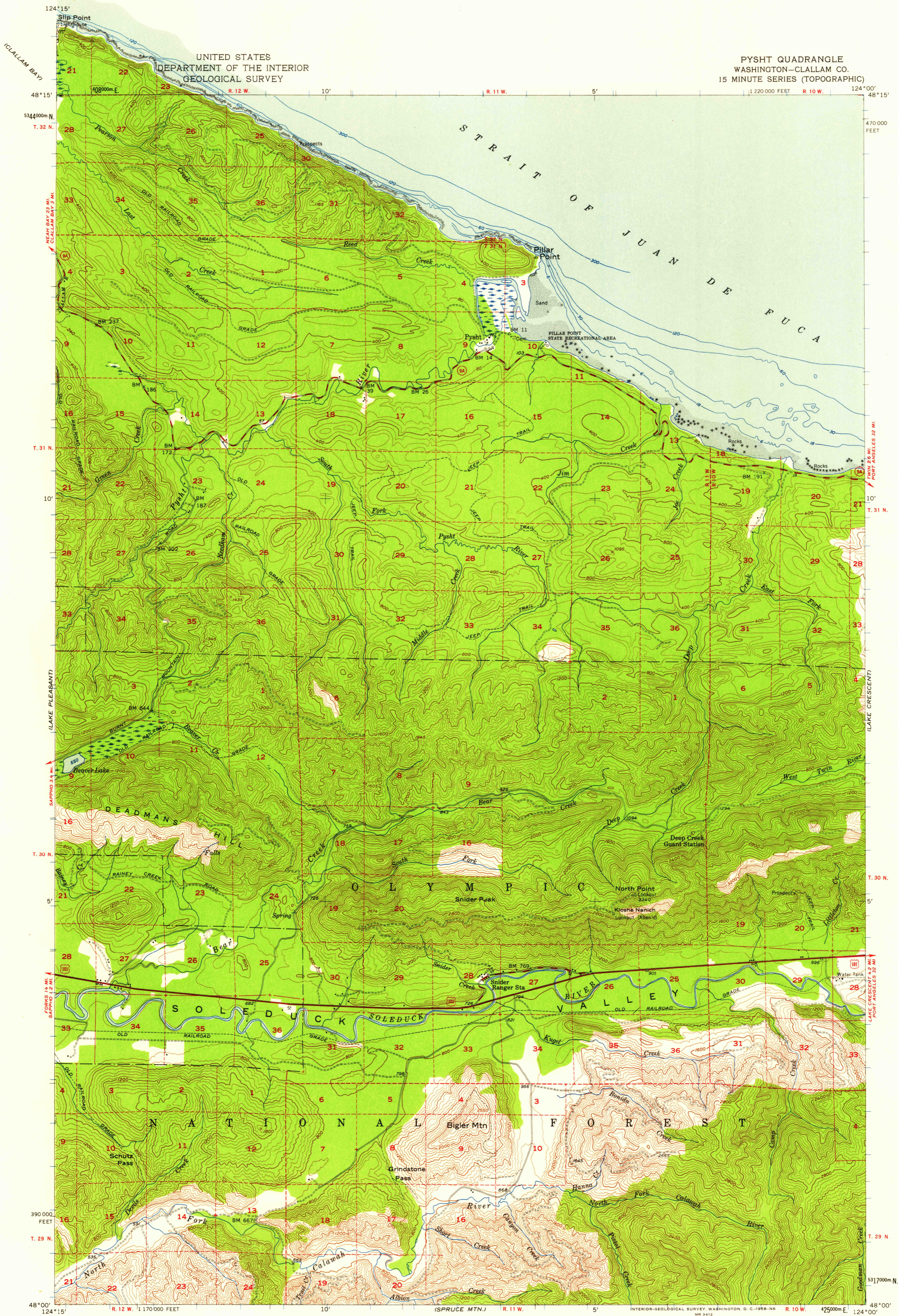
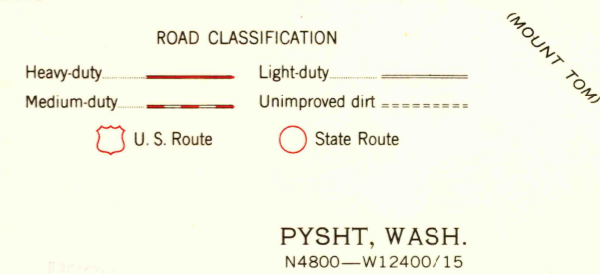
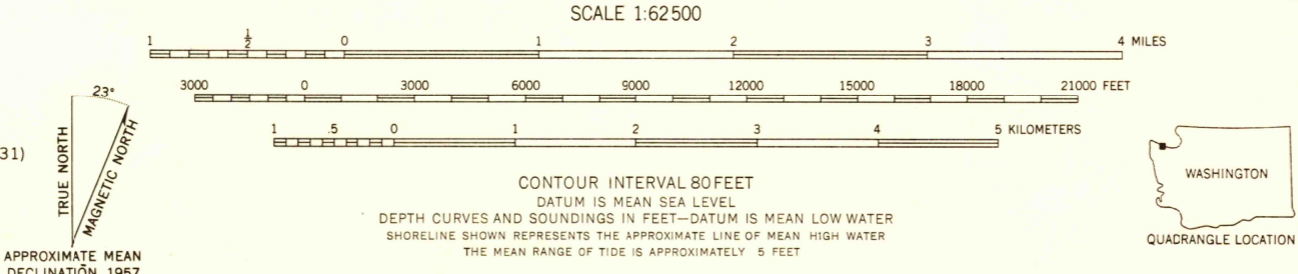


UNITED STATES  
DEPARTMENT OF THE INTERIOR  
GEOLOGICAL SURVEY

PYSHT QUADRANGLE  
WASHINGTON—CLALLAM CO.  
15 MINUTE SERIES (TOPOGRAPHIC)



Mapped, edited, and published by the Geological Survey  
Control by USGS, USC&GS, and USCE  
Mapped 1918, remapped 1957  
Topography from aerial photographs by ER-55 plotter  
Aerial photographs taken 1955. Field check 1957  
Hydrography compiled from USC&GS hydrographic surveys (1931)  
Polyconic projection. 1927 North American datum  
10,000-foot grid based on Washington coordinate system,  
north zone  
1000-meter Universal Transverse Mercator grid ticks,  
zone 10, shown in blue  
Dashed land lines indicate approximate locations  
Unchecked elevations are shown in brown



FOR SALE BY U. S. GEOLOGICAL SURVEY, DENVER 2, COLORADO OR WASHINGTON 25, D. C.  
A FOLDER DESCRIBING TOPOGRAPHIC MAPS AND SYMBOLS IS AVAILABLE ON REQUEST

PYSHT, WASH.  
N4800—W12400/15  
1957

USGS  
Historical  
Topographic  
U.S.G.S.  
FILE CO  
TOPOGRAPHIC DIV

SEP 11 1957

2280