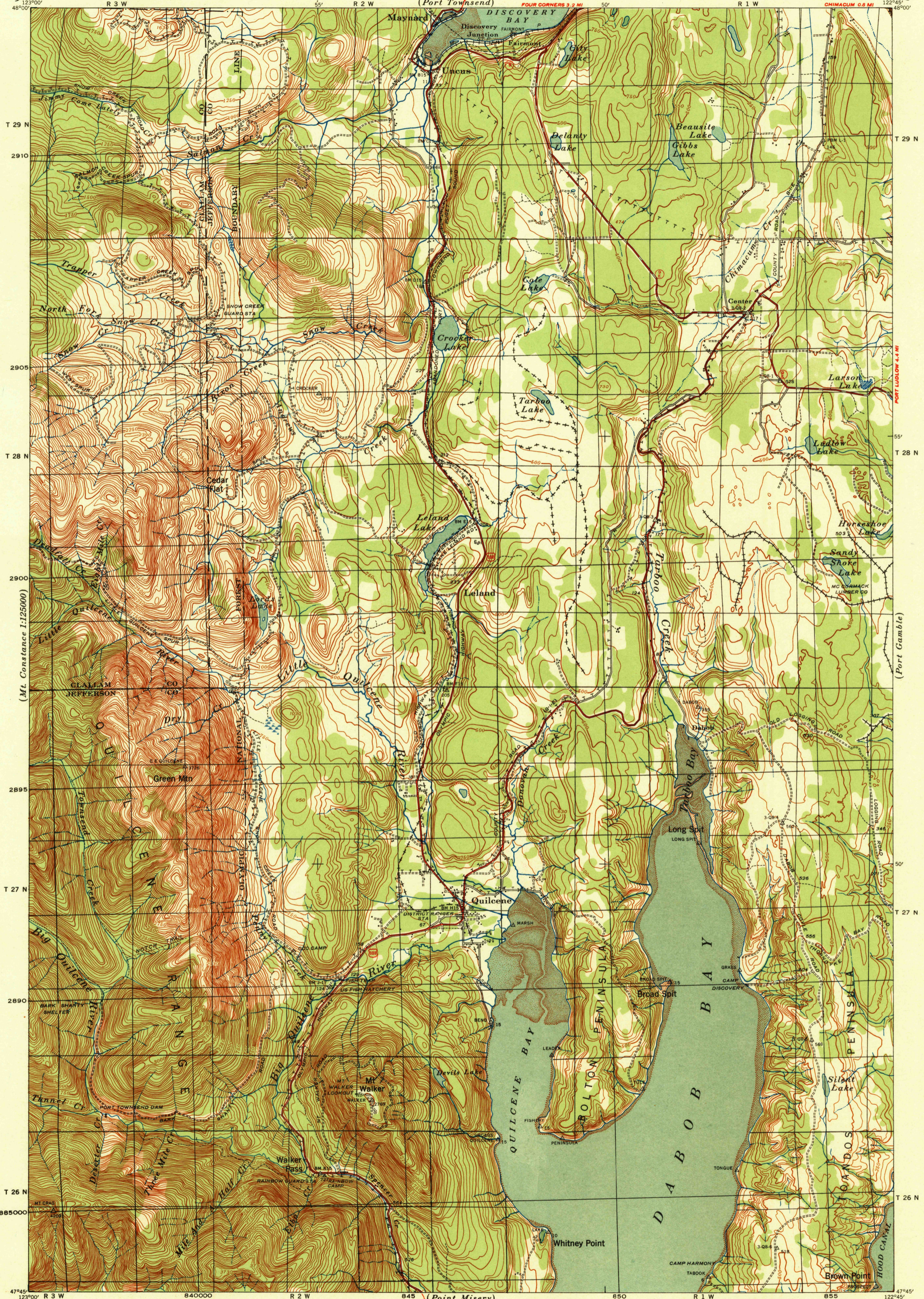


(Dungeness)

CORPS OF ENGINEERS, U. S. ARMY  
TACTICAL MAP

WASHINGTON  
QUILCENE QUADRANGLE  
GRID ZONE "G"

(Coupeville)



Prepared under the direction of the Chief of Engineers, U. S. Army, 1936.  
 Horizontal control by U. S. Coast and Geodetic Survey, 1934-35 and 29th Engineers, U. S. Army, 1936-37.  
 Vertical control by U. S. Coast and Geodetic Survey, 1931 and 29th Engineers, U. S. Army, 1936-37.  
 Topography by 29th Engineers, U. S. Army, 1937, using stereocomparators and prismatic stereoscopes with elevation calculators from five-lens aerial photographs, flown by 91st Observation Squadron, Air Corps, U. S. Army, 1936.  
 Polyconic Projection, North American Datum 1927.

Scale 62500  
 1000 5000 0 1000 2000 3000 4000 5000 6000 7000 Yards  
 1800 0 1000 2000 3000 4000 5000 6000 7000 8000 Feet  
 0 2 4 Kilometers

Contour interval 50 feet  
 Datum is mean sea level (1929 Adj.)  
 FIVE THOUSAND YARD GRID COMPUTED FROM "GRID SYSTEM FOR PROGRESSIVE MAPS IN THE U. S." ZONE G. U. S. C. & G. S. SPECIAL PUBLICATION NO. 59 (THE LAST THREE DIGITS OF THE GRID NUMBERS ARE OMITTED)

NOTE: OFFICERS USING THIS MAP WILL MARK HEREON CORRECTIONS AND ADDITIONS WHICH COME TO THEIR ATTENTION AND HAIL DIRECT TO "THE CHIEF OF ENGINEERS, WASHINGTON, D. C."

APPROXIMATE MEAN DECLINATION 1938  
 ANNUAL MAGNETIC CHANGE 2' DEGREE

USCG  
 Historical File  
 Topographic Division

QUILCENE, WASH.  
 N4745-W12245/15

(The Brothers)

(Port Orchard)

