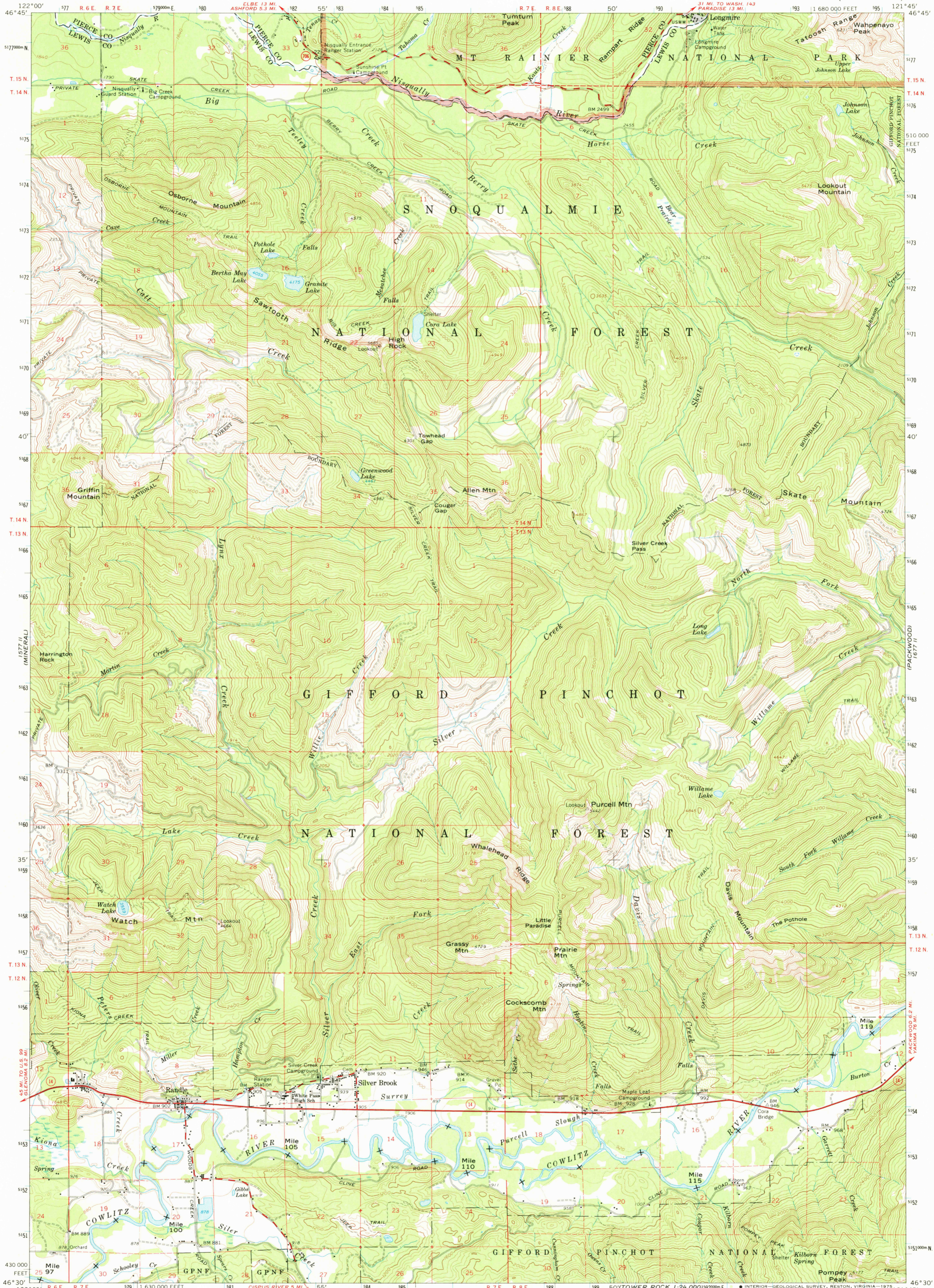


(KASAPUSUN)

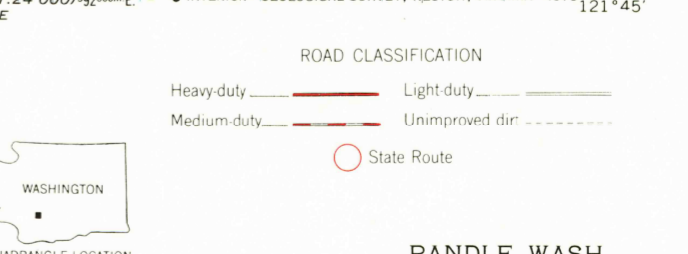
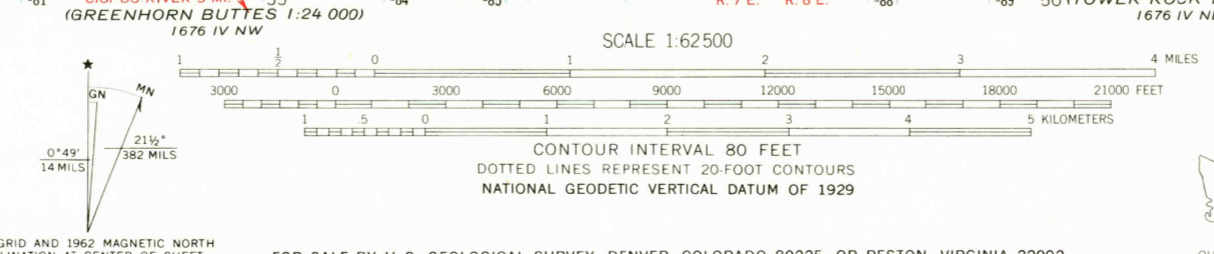
UNITED STATES
DEPARTMENT OF THE INTERIOR
GEOLOGICAL SURVEY

RANDLE QUADRANGLE
WASHINGTON
15 MINUTE SERIES (TOPOGRAPHIC)

INT. RAINIER NAT. PARK



Mapped, edited, and published by the Geological Survey
Control by USGS and USCGS
Topography by photogrammetric methods from aerial
photographs taken 1959. Field checked 1962
Polyconic projection 1927 North American datum
10,000-foot grid based on Washington coordinate system,
south zone
1000-meter Universal Transverse Mercator grid ticks,
zone 10, shown in blue
Where omitted, land lines have not been established



FOR SALE BY U. S. GEOLOGICAL SURVEY, DENVER, COLORADO 80225, OR RESTON, VIRGINIA 22092
A FOLDER DESCRIBING TOPOGRAPHIC MAPS AND SYMBOLS IS AVAILABLE ON REQUEST

RANDLE, WASH.
N4630—W12145/15
1962
AMS 1677 III—SERIES V791

(SPIRIT LAKE)
1976