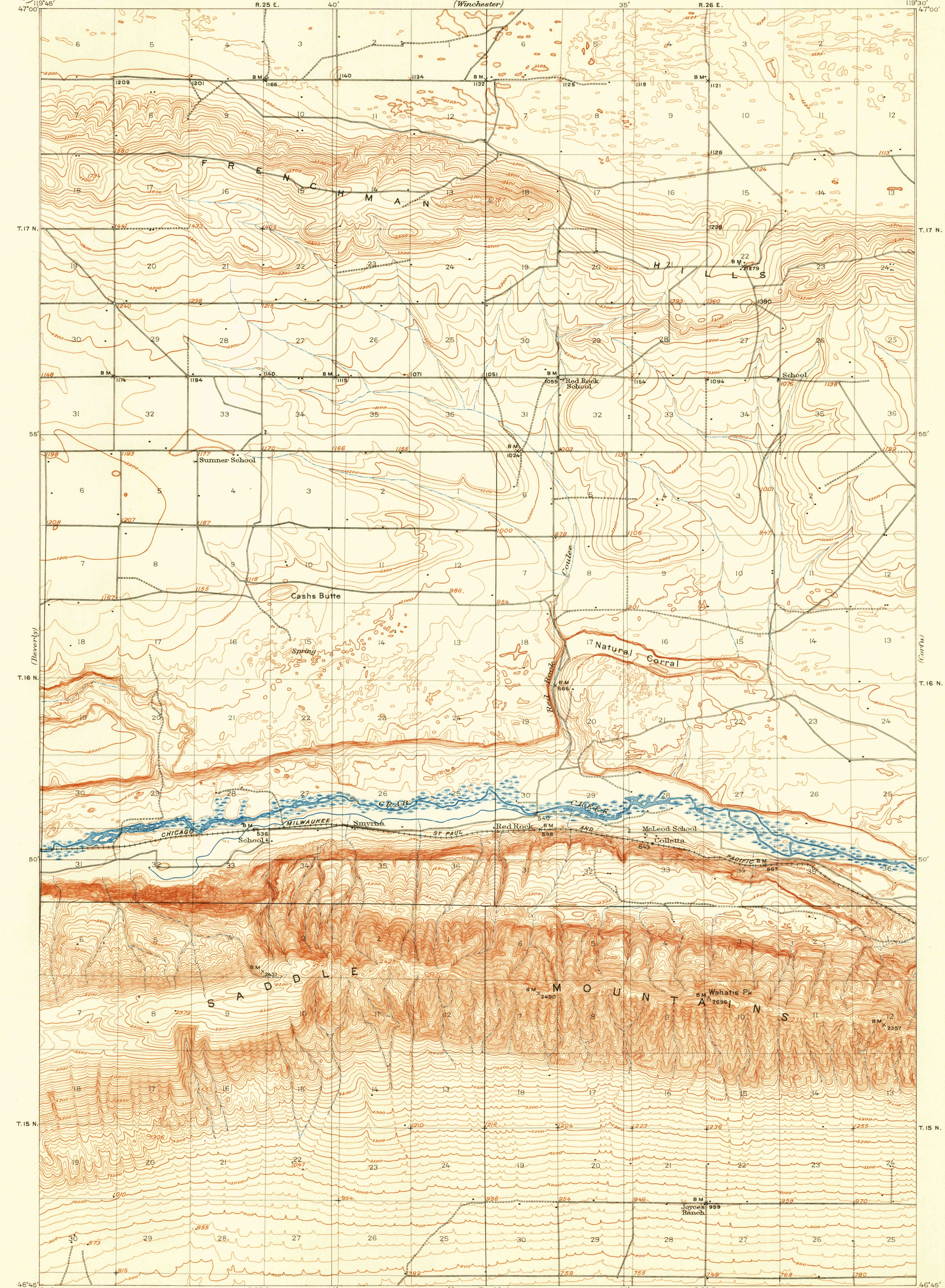


U.S.G.S.
FILE COPY

UNITED STATES
DEPARTMENT OF THE INTERIOR
GEOLOGICAL SURVEY

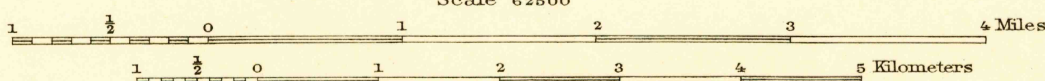
STATE OF WASHINGTON
REPRESENTED BY THE
DEPARTMENT OF CONSERVATION AND DEVELOPMENT
(Winchester)

WASHINGTON
(GRANT COUNTY)
RED ROCK QUADRANGLE



R.B. Marshall, Chief Geographer.
T.G. Gardine, Geographer in charge.
Topography by A.O. Burkland, H.L. McDonald,
C.F. Eberly, and R.M. LaFollette.
Control by C.H. Semper and R.B. Robertson.
Surveyed in 1909.

McDonald
E L A F
Burkland



Contour interval 25 feet.
Datum is mean sea level.

TRUE NORTH
MAGNETIC NORTH
APPROXIMATE MEAN
DECLINATION 1909:

Edition of Jan. 1911, reprinted 1940
Polyconic projection

U.S.G.S.
FILE COPY
Inspection and Editing.

WASH.
RED ROCK

USCS
Historical File
Topographic Division

MAY 8 1951 1070