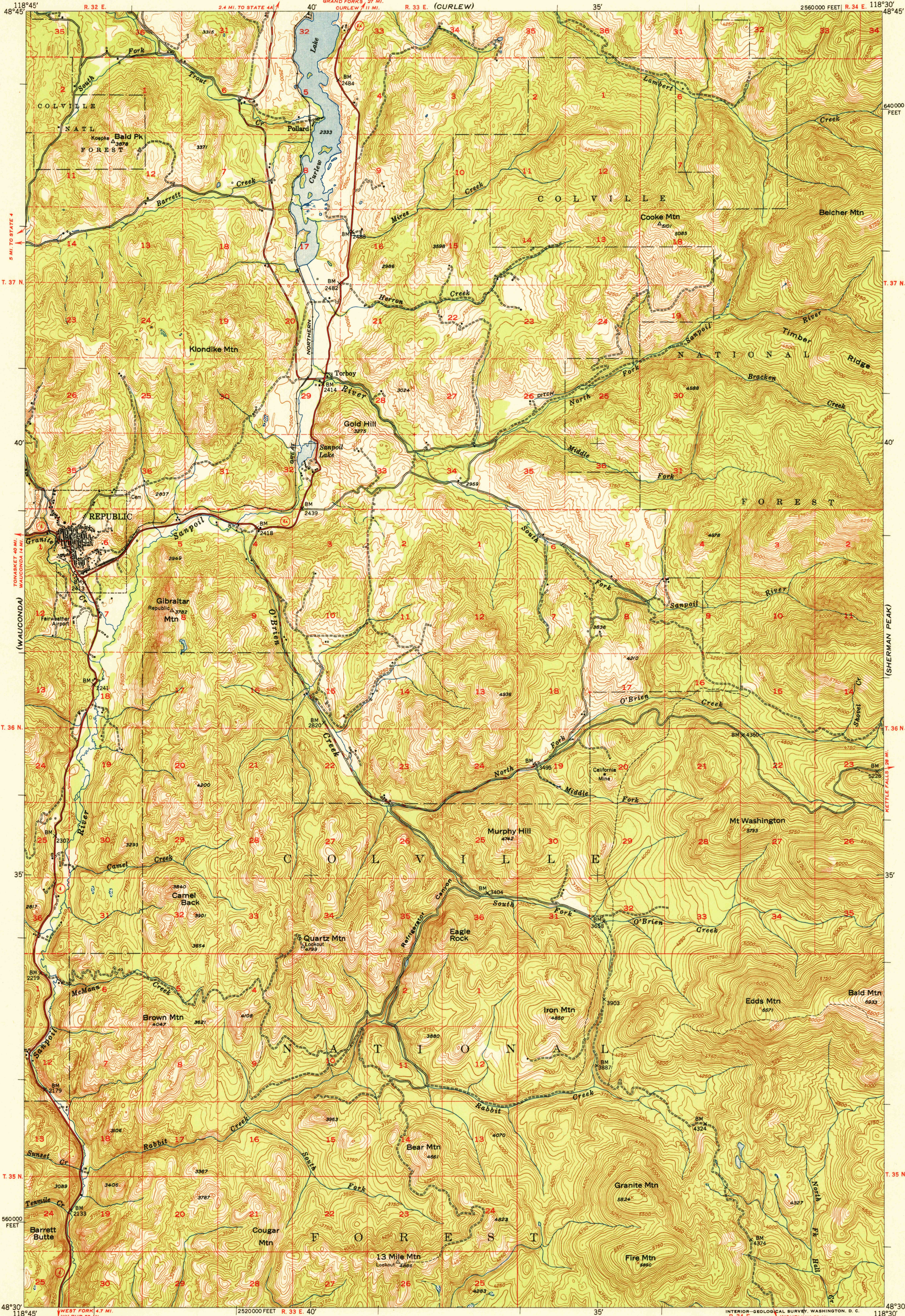
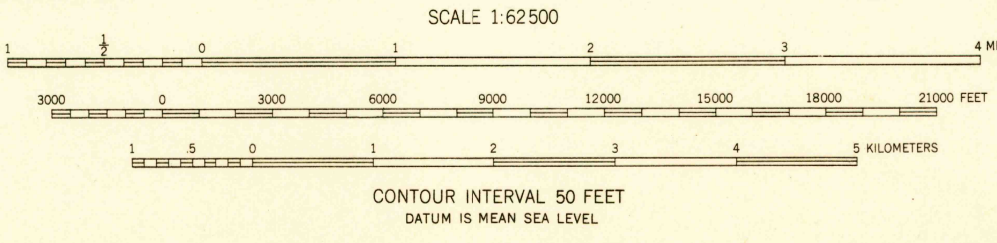


U.S.G.S.  
FILE COPY  
Inspection and Editing.



Mapped and edited by U. S. Forest Service  
Published by the Geological Survey  
Control by U. S. Forest Service, Bureau of Reclamation,  
International Boundary Commission, USGS, and USC&GS  
Topography from aerial photographs by KEK Plotter  
Aerial photographs taken 1944. Field check 1948  
Polyconic projection. 1927 North American datum  
10,000-foot grid based on Washington coordinate system  
north zone  
Dashed land lines indicate approximate location



ROAD CLASSIFICATION  
HARD SURFACE ALL WEATHER ROADS DRY WEATHER ROADS  
Heavy-duty           Improved dirt       
Medium-duty           Unimproved dirt       
Loose surface, graded, or narrow hard-surface       
U. S. Route      State Route     

U.S.G.S.  
FILE COPY  
Inspection and Editing.

THIS MAP COMPLIES WITH NATIONAL MAP ACCURACY STANDARDS  
FOR SALE BY U. S. GEOLOGICAL SURVEY, FEDERAL CENTER, DENVER, COLORADO OR WASHINGTON 25, D. C.  
A FOLDER DESCRIBING TOPOGRAPHIC MAPS AND SYMBOLS IS AVAILABLE ON REQUEST

REPUBLIC, WASH.  
N4830-W11830/15  
EDITION OF 1951