

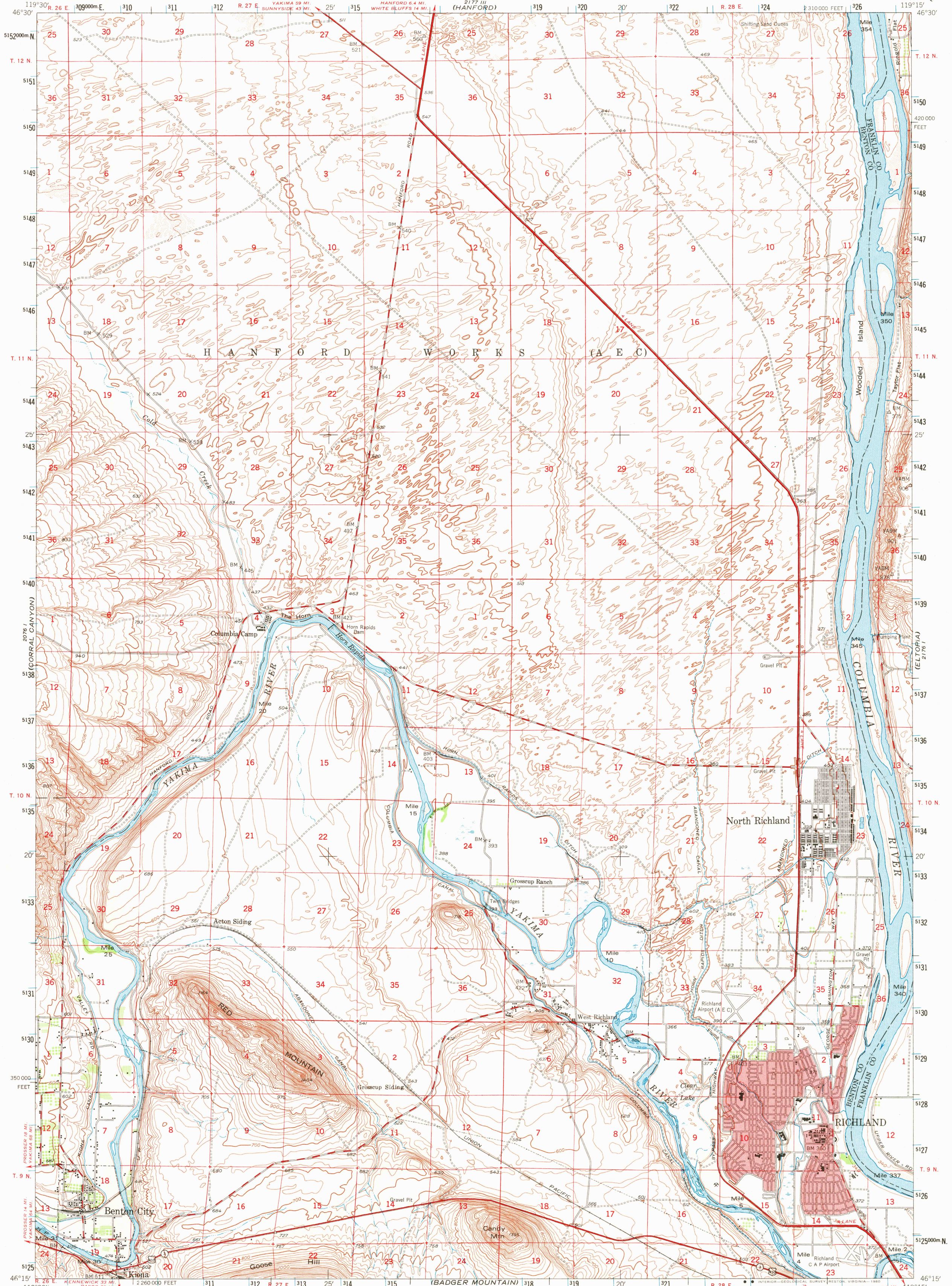
(COYOUE RAPIDS)  
277' N  
207' E

UNITED STATES  
DEPARTMENT OF THE INTERIOR  
GEOLOGICAL SURVEY

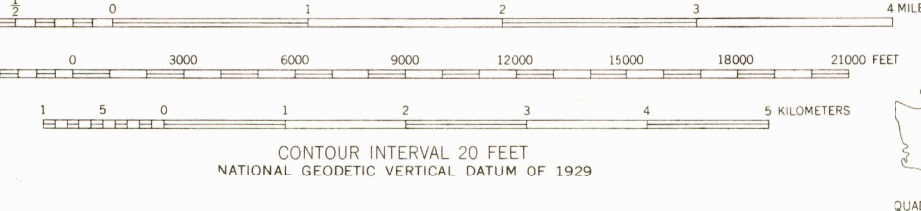
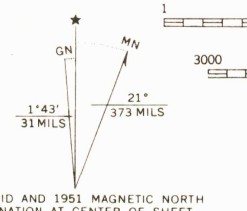
UNITED STATES  
DEPARTMENT OF THE ARMY  
CORPS OF ENGINEERS  
(HANFORD)

RICHLAND QUADRANGLE  
WASHINGTON  
15 MINUTE SERIES (TOPOGRAPHIC)

277' N  
217' W  
(MESA)



Mapped by the Geological Survey for the Army Map Service  
 Edited and published by the Geological Survey  
 Control by USGS and USC&GS  
 Topography from aerial photographs by multiplex methods  
 and by plane-table surveys  
 Aerial photographs taken 1948. Field check 1951  
 Polyconic projection. 1927 North American datum  
 10,000-foot grid based on Washington coordinate system,  
 south zone  
 Red tint indicates areas in which only  
 landmark buildings are shown  
 1000-meter Universal Transverse Mercator grid ticks,  
 zone 11, shown in blue  
 To place on the predicted North American Datum 1983  
 move the projection lines 19 meters north and 86 meters east  
 There may be private inholdings within the boundaries of  
 the National or State reservations shown on this map



ROAD CLASSIFICATION  
 Heavy-duty 4 LANE 6 LANE Light-duty  
 Medium-duty 4 LANE 6 LANE Unimproved dirt  
 U.S. Route State Route  
 This area is also covered by 7.5-minute 1:24,000-scale  
 maps: Horn Rapids Dam 1977, Benton City 1974,  
 Richland 1978, and Wooded Island 1975  
 RICHLAND, WASH.  
 N4615-W11915/15  
 1951  
 DMA 2176 IV-SERIES V791

USGS  
Historical File  
Topographic Division

JAN 29 1981  
2100