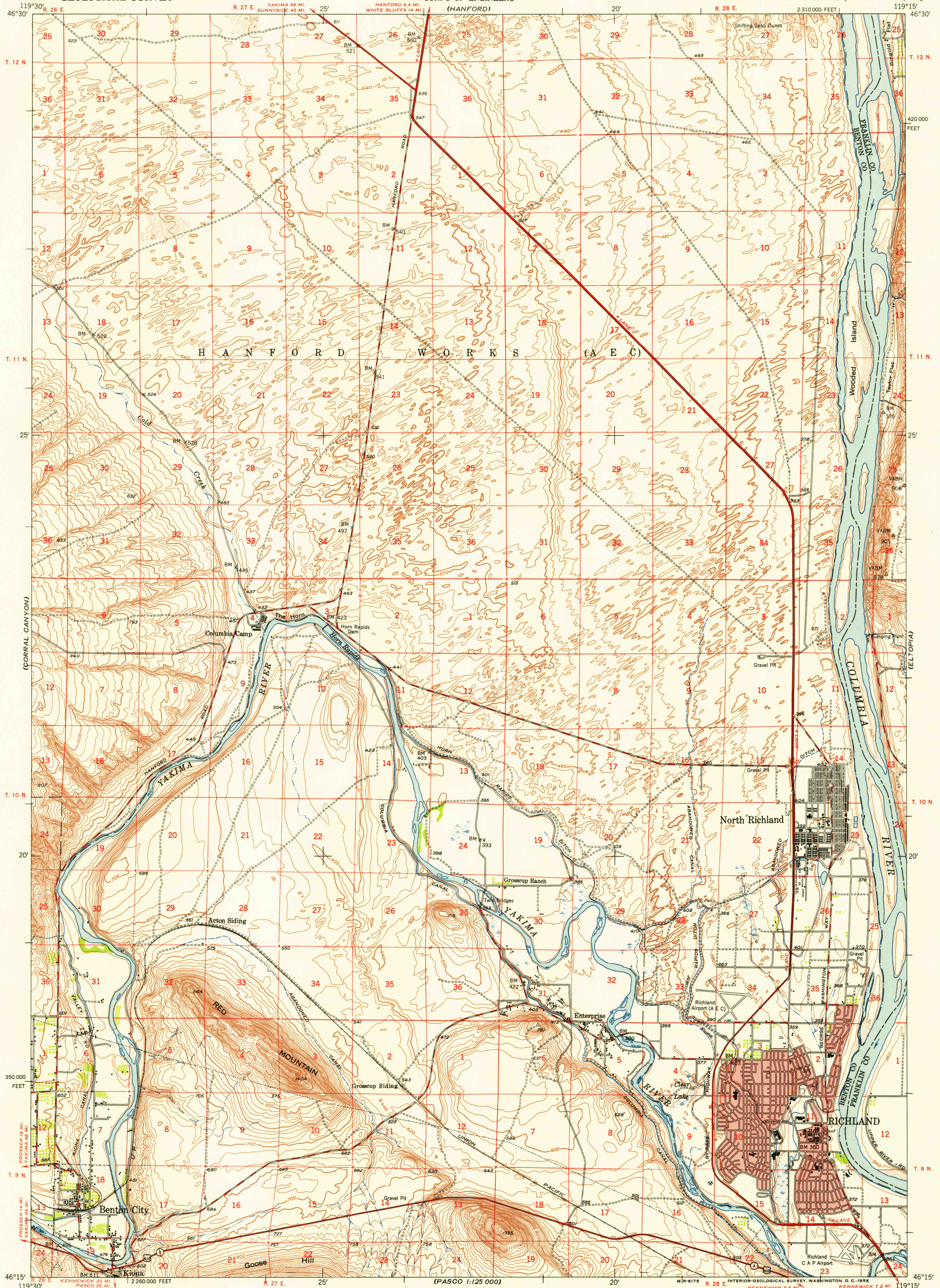


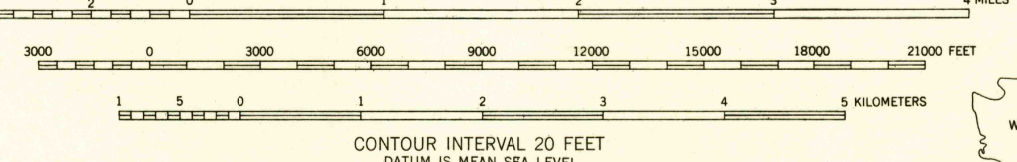
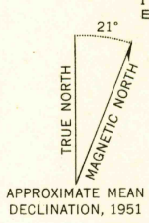
U.S.G.S.
FILE COPY
TOPOGRAPHIC DIVISION



Mapped by the Geological Survey for the Army Map Service
Edited and published for civil use by the Geological Survey
Control by USGS and USC&GS

Topography from aerial photographs by multiplex methods
and by plane-table surveys
Aerial photographs taken 1948. Field check 1951
Polyconic projection. 1927 North American datum
10,000-foot grid based on Washington coordinate system,
south zone

Red tint indicates areas in which only
landmark buildings are shown



ROAD CLASSIFICATION

Heavy-duty	4 LANE, 6 LANE	Light-duty
Medium-duty	2 LANE, 4 LANE	Unimproved dirt

U. S. Route State Route

USGS
Historical File
Topographic Division
RICHLAND, WASH.
N4615-W11915/15
1951

THIS MAP COMPLIES WITH NATIONAL MAP ACCURACY STANDARDS
FOR SALE BY U. S. GEOLOGICAL SURVEY, FEDERAL CENTER, DENVER, COLORADO OR WASHINGTON 25, D. C.
A FOLDER DESCRIBING TOPOGRAPHIC MAPS AND SYMBOLS IS AVAILABLE ON REQUEST

U.S.G.S.
FILE COPY
TOPOGRAPHIC DIVISION