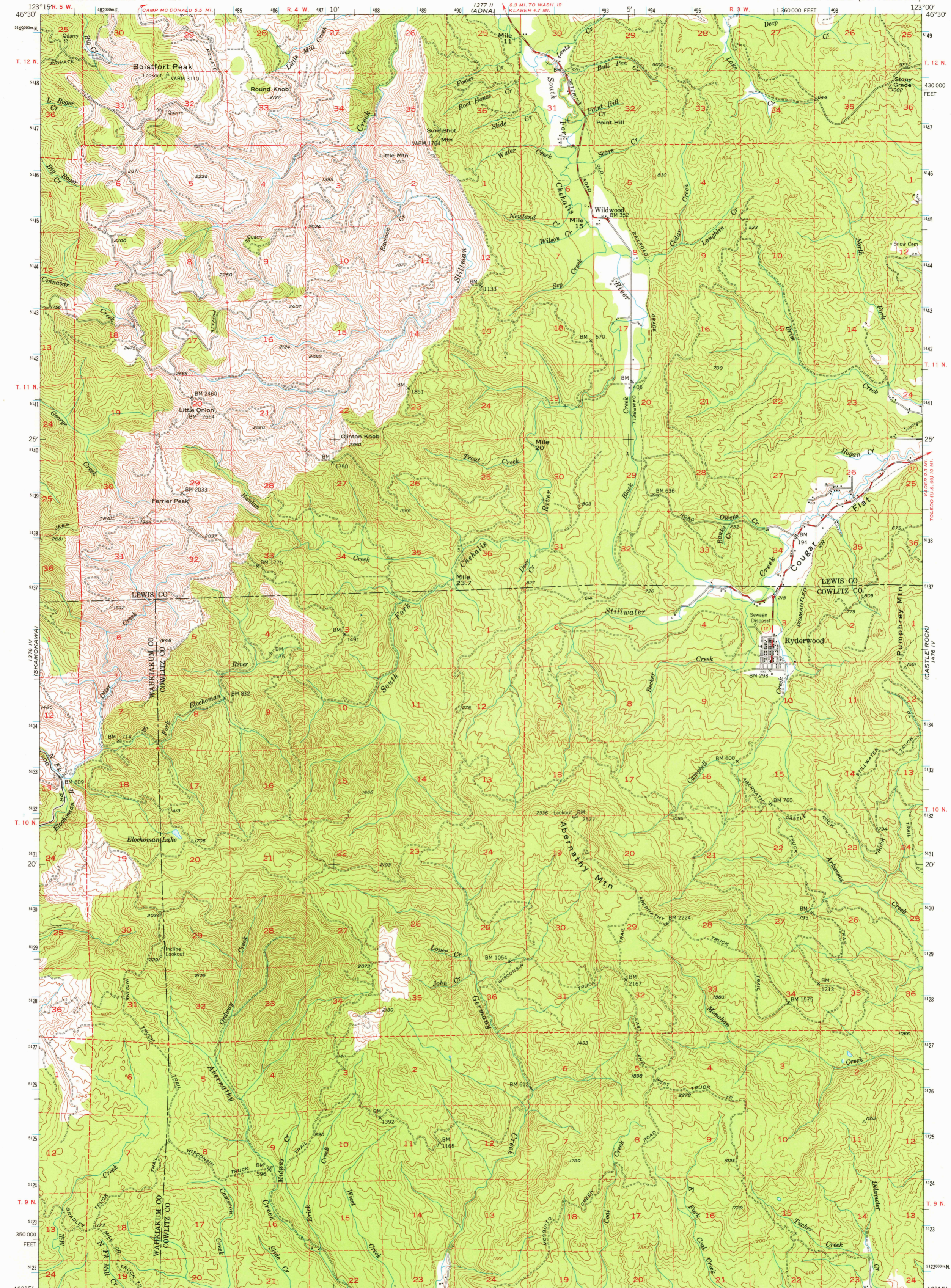
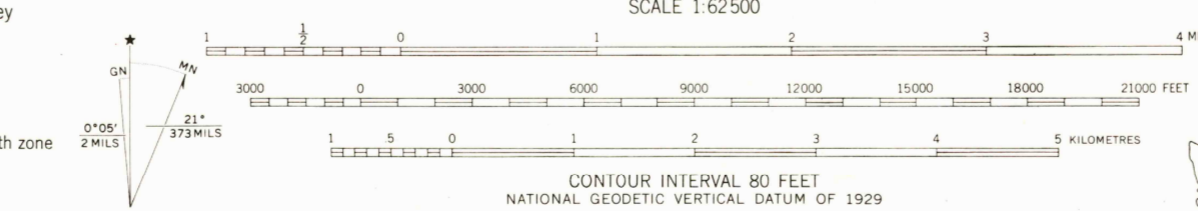


UNITED STATES  
DEPARTMENT OF THE INTERIOR  
GEOLOGICAL SURVEY

RYDERWOOD QUADRANGLE  
WASHINGTON  
15 MINUTE SERIES (TOPOGRAPHIC)



Mapped, edited, and published by the Geological Survey  
Control by USGS, USC&GS, and USCE  
Topography from aerial photographs by multiplex methods  
Aerial photographs taken 1951. Field check 1953  
Polyconic projection. 1927 North American datum  
10,000-foot grid based on Washington coordinate system, south zone  
Dashed land lines indicate approximate locations  
Unchecked elevations are shown in brown  
1000-metre Transverse Mercator grid ticks,  
zone 10, shown in blue



ROAD CLASSIFICATION  
Medium-duty — Light-duty  
Unimproved dirt — State Route



RYDERWOOD, WASH.  
N4615-W12300/15

THIS MAP COMPLIES WITH NATIONAL MAP ACCURACY STANDARDS  
FOR SALE BY U. S. GEOLOGICAL SURVEY, DENVER, COLORADO 80225, OR RESTON, VIRGINIA 22092  
A FOLDER DESCRIBING TOPOGRAPHIC MAPS AND SYMBOLS IS AVAILABLE ON REQUEST

1953  
AMS 1376 I—SERIES V791