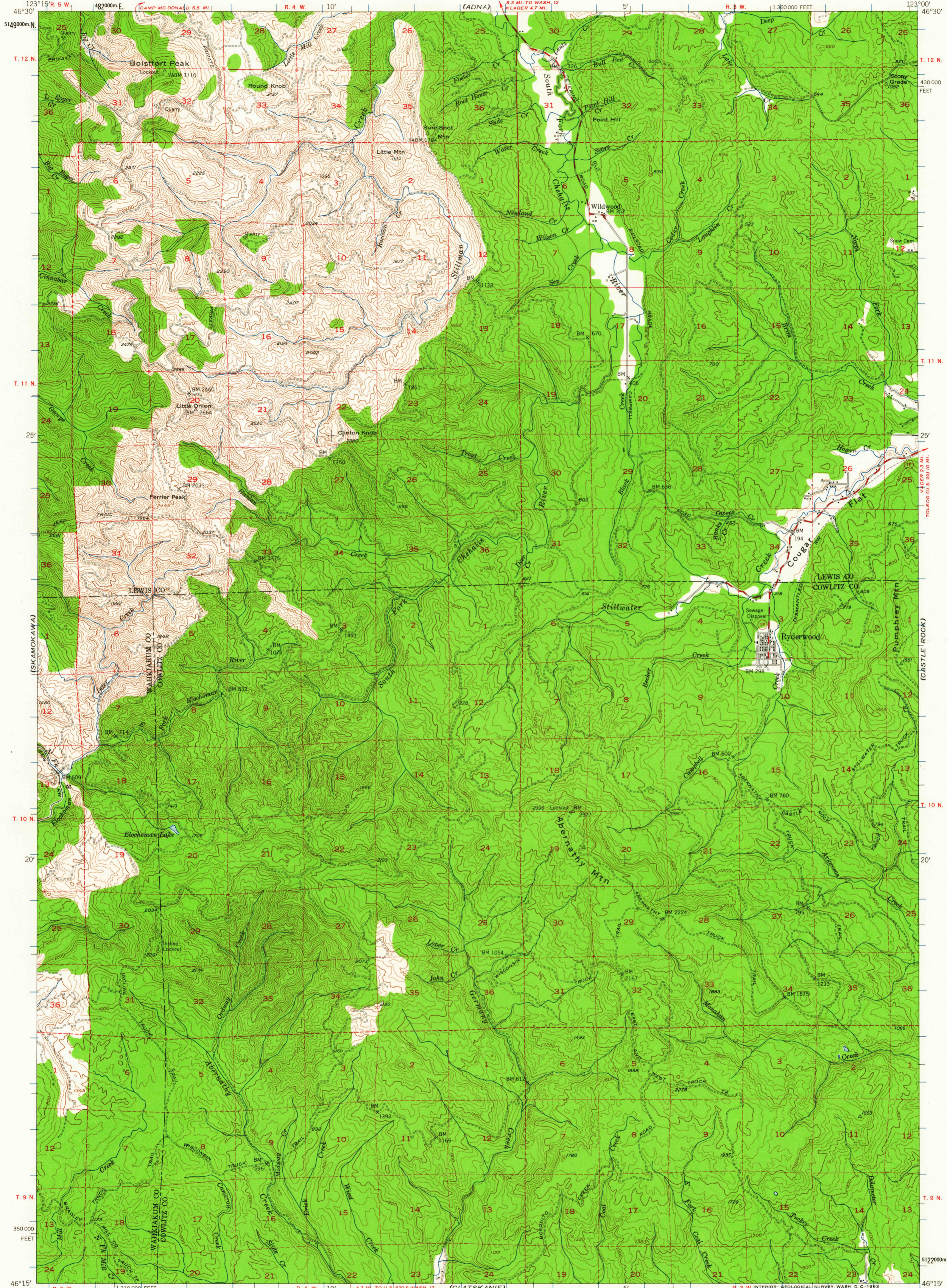


(FE ELL)

UNITED STATES
DEPARTMENT OF THE INTERIOR
GEOLOGICAL SURVEY

RYDERWOOD QUADRANGLE
WASHINGTON
15 MINUTE SERIES (TOPOGRAPHIC)

(CENTRAL)



Mapped, edited, and published by the Geological Survey
Control by USGS, USC&GS, and USCE
Topography from aerial photographs by multiplex methods
Aerial photographs taken 1951. Field check 1953
Polyconic projection. 1927 North American datum
10,000-foot grid based on Washington coordinate system, south zone
Dashed land lines indicate approximate locations
Unchecked elevations are shown in brown
1000-meter Universal Transverse Mercator grid ticks,
zone 10, shown in blue

SCALE 1:62 500

ROAD CLASSIFICATION
1963
Medium-duty ——— Light-duty ———
Unimproved dirt - - - - - State Route

TRUE NORTH
MAGNETIC NORTH
APPROXIMATE MEAN DECLINATION, 1953

CONTOUR INTERVAL 80 FEET
DATUM IS MEAN SEA LEVEL

WASHINGTON
QUADRANGLE LOCATION

RYDERWOOD, WASH.
N4615-W12300/15
1953

THIS MAP COMPLIES WITH NATIONAL MAP ACCURACY STANDARDS
FOR SALE BY U. S. GEOLOGICAL SURVEY, DENVER 25, COLORADO OR WASHINGTON 25, D. C.
A FOLDER DESCRIBING TOPOGRAPHIC MAPS AND SYMBOLS IS AVAILABLE ON REQUEST

(SKAMOKAWA)

(GATHLAMET)

(KALAMA)

JAN 28 1964

2180

USGS
Historical File
Topographic Division