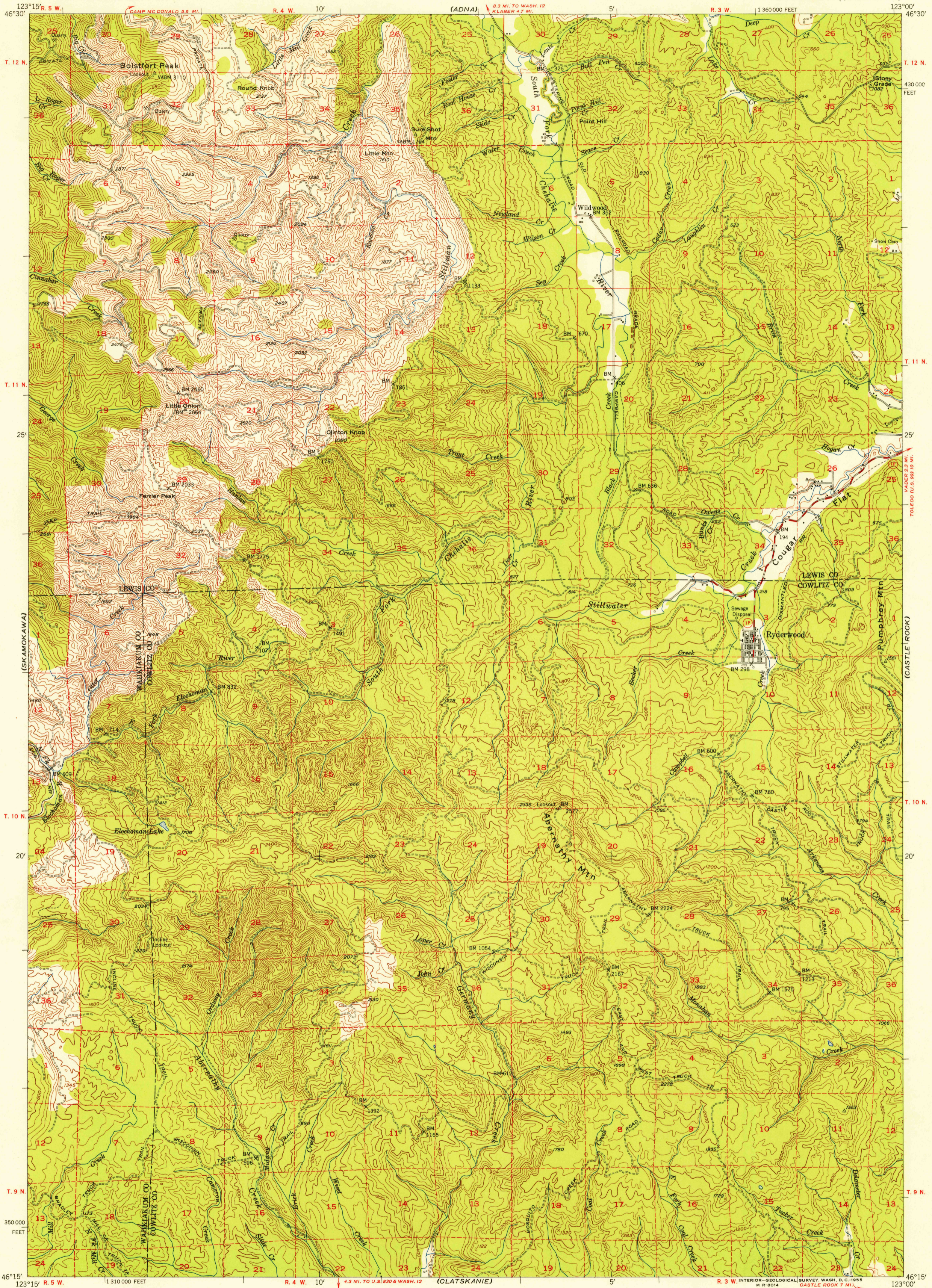


(PE ELL)

UNITED STATES  
DEPARTMENT OF THE INTERIOR  
GEOLOGICAL SURVEY

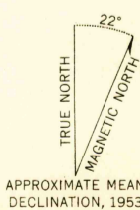
RYDERWOOD QUADRANGLE  
WASHINGTON  
15 MINUTE SERIES (TOPOGRAPHIC)

(CENTRAL)

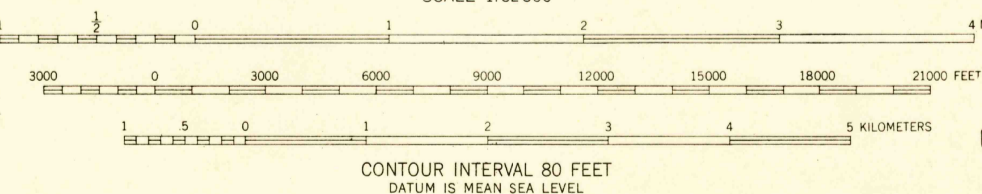


U.S.G.S.  
FILE COPY  
TOPOGRAPHIC DIVISION

Mapped, edited, and published by the Geological Survey  
Control by USGS, USC&GS, and USCE  
Topography from aerial photographs by multiplex methods  
Aerial photographs taken 1951. Field check 1953  
Polyconic projection. 1927 North American datum  
10,000-foot grid based on Washington coordinate system, south zone  
Dashed land lines indicate approximate locations  
Unchecked elevations are shown in brown



APPROXIMATE MEAN  
DECLINATION, 1953



QUADRANGLE LOCATION

ROAD CLASSIFICATION	
Heavy-duty	4 LANE 16 LANE Light-duty
Medium-duty	4 LANE 16 LANE Unimproved dirt
U. S. Route	State Route

RYDERWOOD, WASH.  
N4615-W12300/15

USGS  
Historical File  
Topographic Division

1953

THIS MAP COMPLIES WITH NATIONAL MAP ACCURACY STANDARDS  
FOR SALE BY U. S. GEOLOGICAL SURVEY, FEDERAL CENTER, DENVER, COLORADO OR WASHINGTON 25, D. C.  
A FOLDER DESCRIBING TOPOGRAPHIC MAPS AND SYMBOLS IS AVAILABLE ON REQUEST

U.S.G.S.  
FILE COPY  
TOPOGRAPHIC DIVISION

OCT 11 1955

2053