

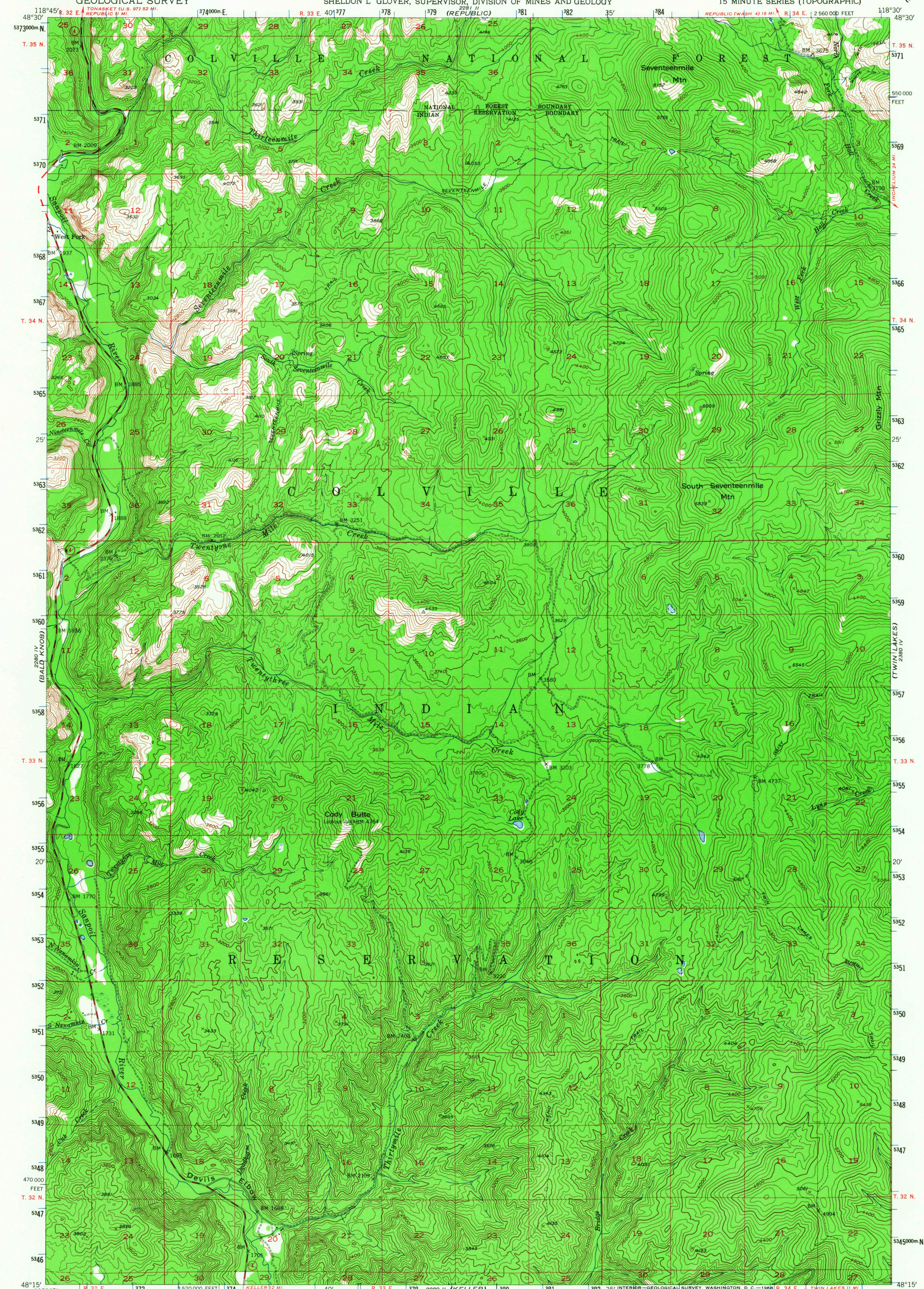
2881 II
(NEVENS)

UNITED STATES
DEPARTMENT OF THE INTERIOR
GEOLOGICAL SURVEY

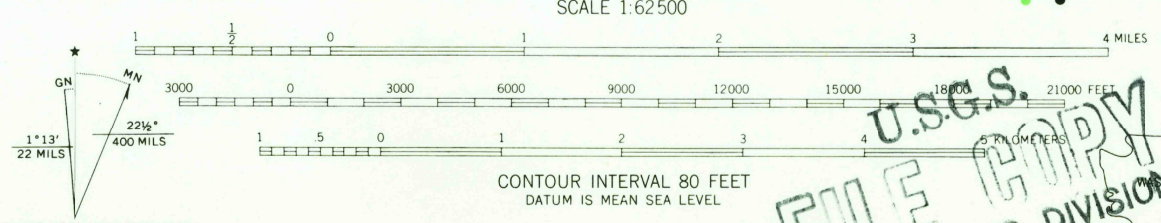
STATE OF WASHINGTON
DEPARTMENT OF CONSERVATION AND DEVELOPMENT
W. A. GALBRAITH, DIRECTOR
SHELDON L. GLOVER, SUPERVISOR, DIVISION OF MINES AND GEOLOGY

SEVENTEENMILE MTN. QUADRANGLE
WASHINGTON—FERRY CO.
15 MINUTE SERIES (TOPOGRAPHIC)

2881 II
(SHERMAN CREEK)



Maped, edited, and published by the Geological Survey
Control by USGS, USCG&S, and USBR
Topography from aerial photographs by multiplex methods
Aerial photographs taken 1946. Field check 1953
Polyconic projection. 1927 North American datum
10,000-foot grid based on Washington coordinate system,
north zone
Dashed land lines indicate approximate locations
Unchecked elevations are shown in brown
1000-meter Universal Transverse Mercator grid ticks,
zone 11, shown in blue



ROAD CLASSIFICATION
Heavy-duty 4 LANE 6 LANE Light-duty
Medium-duty 4 LANE 6 LANE Unimproved dirt
U. S. Route State Route

THIS MAP COMPLIES WITH NATIONAL MAP ACCURACY STANDARDS
FOR SALE BY U. S. GEOLOGICAL SURVEY, DENVER, COLORADO 80225 OR WASHINGTON, D. C. 20242
A FOLDER DESCRIBING TOPOGRAPHIC MAPS AND SYMBOLS IS AVAILABLE ON REQUEST

SEVENTEENMILE MTN., WASH.
N4815—W11830/15
1953
AMS 2280 I—SERIES V791

2455
MAY 22 1968