

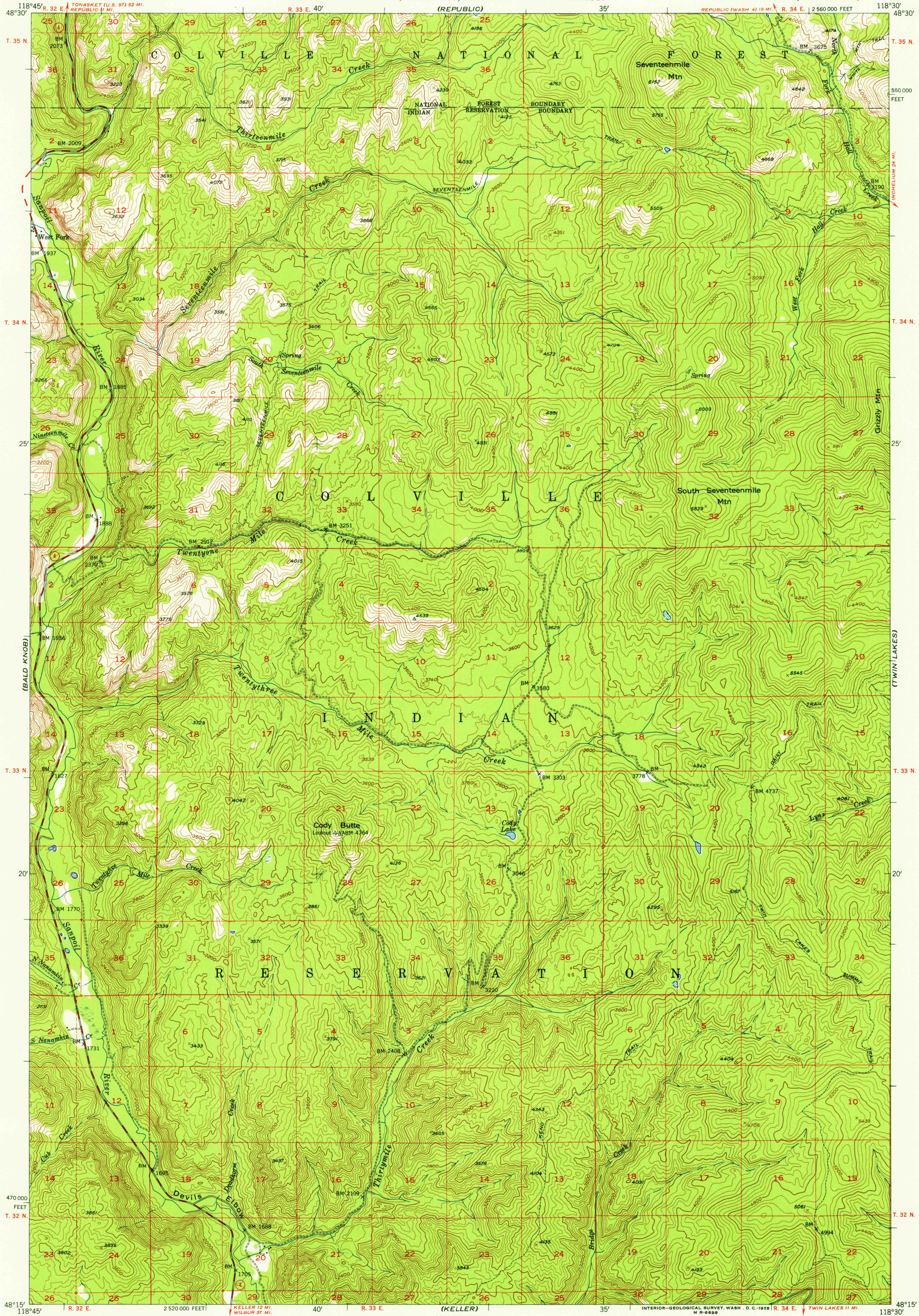
(WALUCONDA)

UNITED STATES
DEPARTMENT OF THE INTERIOR
GEOLOGICAL SURVEY

STATE OF WASHINGTON
DEPARTMENT OF CONSERVATION AND DEVELOPMENT
W. A. GALBRAITH, DIRECTOR
SHELDON L. GLOVER, SUPERVISOR, DIVISION OF MINES AND GEOLOGY
(REPUBLIC)

SEVENTEENMILE MTN. QUADRANGLE
WASHINGTON—FERRY CO.
15 MINUTE SERIES (TOPOGRAPHIC)

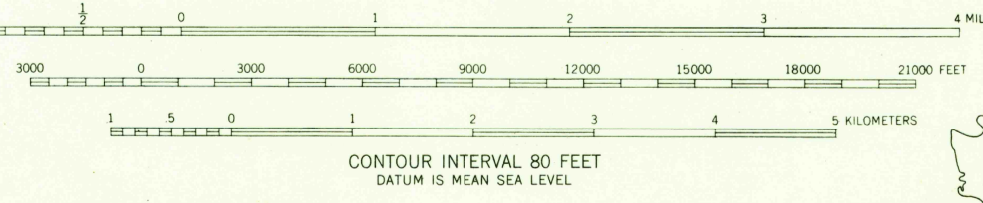
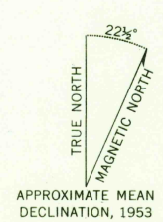
(SHERMAN CREEK)



U.S.G.S.
FILE COPY
TOPOGRAPHIC DIVISION

(NESPLEM)

Mapped, edited, and published by the Geological Survey
Control by USGS, USC&GS, and USBR
Topography from aerial photographs by multiplex methods
Aerial photographs taken 1946. Field check 1953
Polyconic projection. 1927 North American datum
10,000-foot grid based on Washington coordinate system,
north zone
Dashed land lines indicate approximate locations
Unchecked elevations are shown in brown



ROAD CLASSIFICATION

Heavy-duty	4 LANE 16 LANE	Light-duty
Medium-duty	4 LANE 16 LANE	Unimproved dirt

U. S. Route (square symbol)
State Route (circle symbol)



SEVENTEENMILE MTN., WASH.
N4815—W11830/15
1953

U.S.G.S.
FILE COPY
TOPOGRAPHIC DIVISION

USGS
Historical File
Topographic Division

THIS MAP COMPLIES WITH NATIONAL MAP ACCURACY STANDARDS
FOR SALE BY U. S. GEOLOGICAL SURVEY, FEDERAL CENTER, DENVER, COLORADO OR WASHINGTON 25, D. C.
A FOLDER DESCRIBING TOPOGRAPHIC MAPS AND SYMBOLS IS AVAILABLE ON REQUEST