

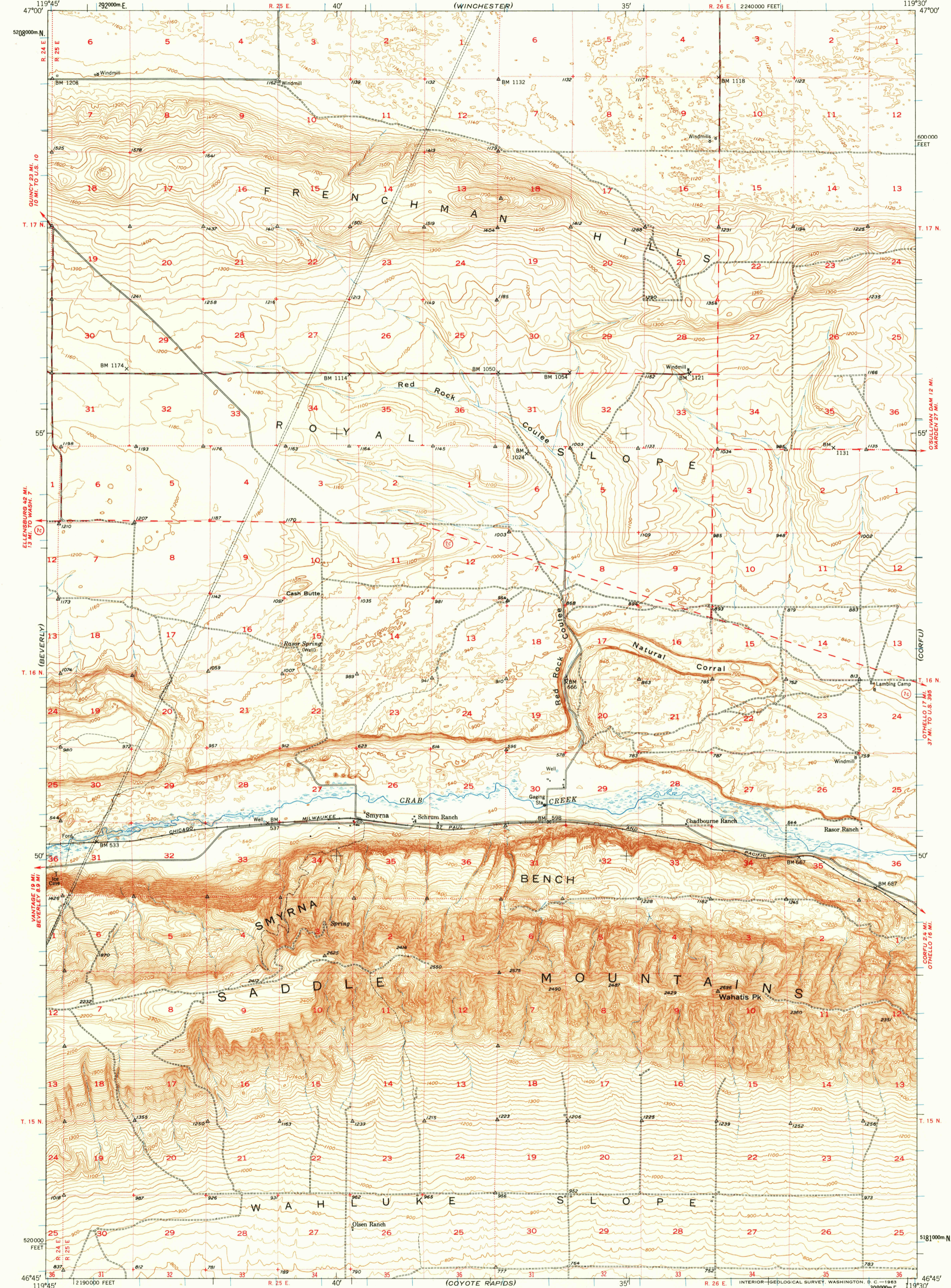
(QUINCY)

UNITED STATES  
DEPARTMENT OF THE INTERIOR  
GEOLOGICAL SURVEY

UNITED STATES  
DEPARTMENT OF THE ARMY  
CORPS OF ENGINEERS  
(WINCHESTER)

SMYRNA QUADRANGLE  
WASHINGTON-GRANT CO.  
15 MINUTE SERIES (TOPOGRAPHIC)

(MOSES LAKE)



Maped by the Geological Survey and Bureau of Reclamation

Edited and published by the Geological Survey

Control by USGS, USC&GS, and USBR

Topography from plane-table surveys by USBR 1935-1941 and from photogrammetric methods by USGS Aerial photographs taken 1949. Field check 1950

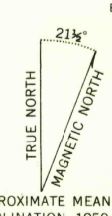
Polyconic projection. 1927 North American Datum 10,000-foot grid based on Washington coordinate system, south zone

Dashed land lines indicate approximate location

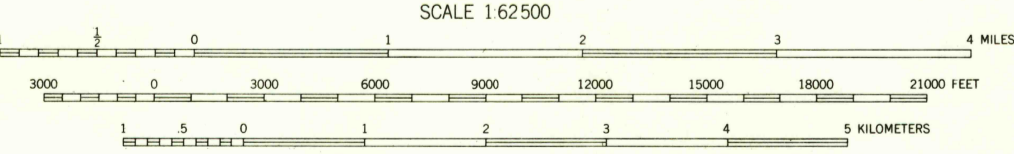
Dotted land lines were established by USBR

Elevations at section corners are for top of marker

1000-meter Universal Transverse Mercator grid ticks, zone 11, shown in blue



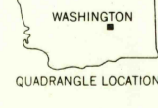
APPROXIMATE MEAN DECLINATION, 1950



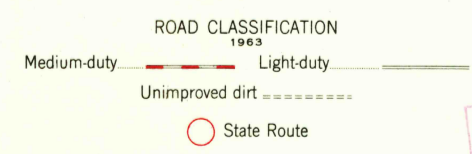
SCALE 1:62500

CONTOUR INTERVAL 20 FEET

DATUM IS MEAN SEA LEVEL



QUADRANGLE LOCATION



ROAD CLASSIFICATION

1963

State Route

USGS

Historical File

SMYRNA, WASH.

N4645-W11930/15

1950

Topographic Division

FILE COPY  
TOPOGRAPHIC DIVISION

1665

SEP 2 5 1963