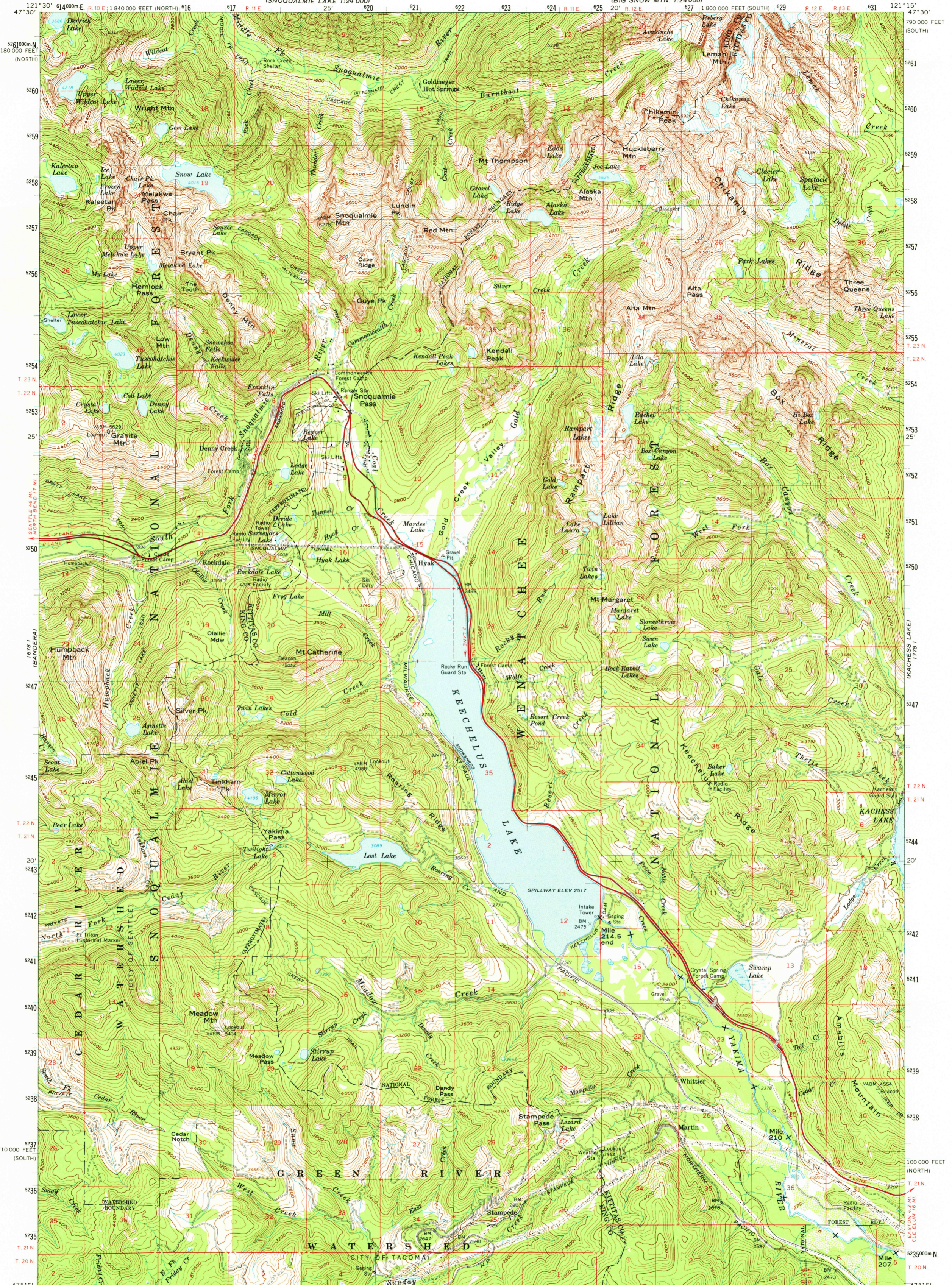


1779 III SW
(SNOQUALMIE LAKE 1:24 000)
25' 620

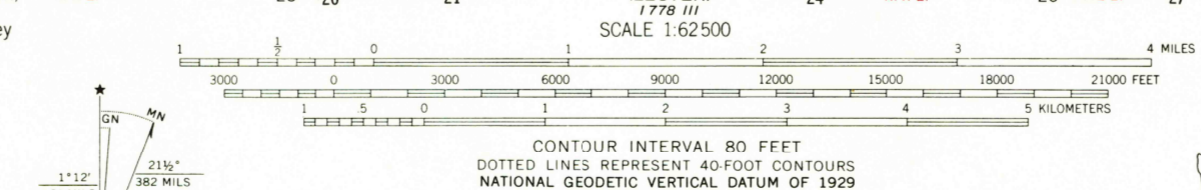
UNITED STATES
DEPARTMENT OF THE INTERIOR
GEOLOGICAL SURVEY

SNOQUALMIE PASS QUADRANGLE
WASHINGTON
15 MINUTE SERIES (TOPOGRAPHIC)

1779 III SE
(BIG SNOW MTN. 1:24 000)
20' R 12 E 627



Maped, edited, and published by the Geological Survey
Control by USGS and USC&GS
Topography by photogrammetric methods from aerial
photographs taken 1957. Field checked 1961
Polyconic projection. 1927 North American datum
10,000-foot grids based on Washington coordinate system,
south zone and north zone
1000-meter Universal Transverse Mercator grid ticks,
zone 10, shown in blue
Area covered by dashed light-blue pattern is subject
to controlled inundation by Kachess Dam to 2257 feet



ROAD CLASSIFICATION
Heavy-duty — Light-duty —
Unimproved dirt —
U.S. Route



SNOQUALMIE PASS, WASH.
N4715-W12115/15
1961
AMS 1778 IV-SERIES V791

FOR SALE BY U.S. GEOLOGICAL SURVEY, DENVER, COLORADO 80225, OR RESTON, VIRGINIA 22092
A FOLDER DESCRIBING TOPOGRAPHIC MAPS AND SYMBOLS IS AVAILABLE ON REQUEST

USGS
Historical File
Topographic Division

FEB 5 1978

22-10