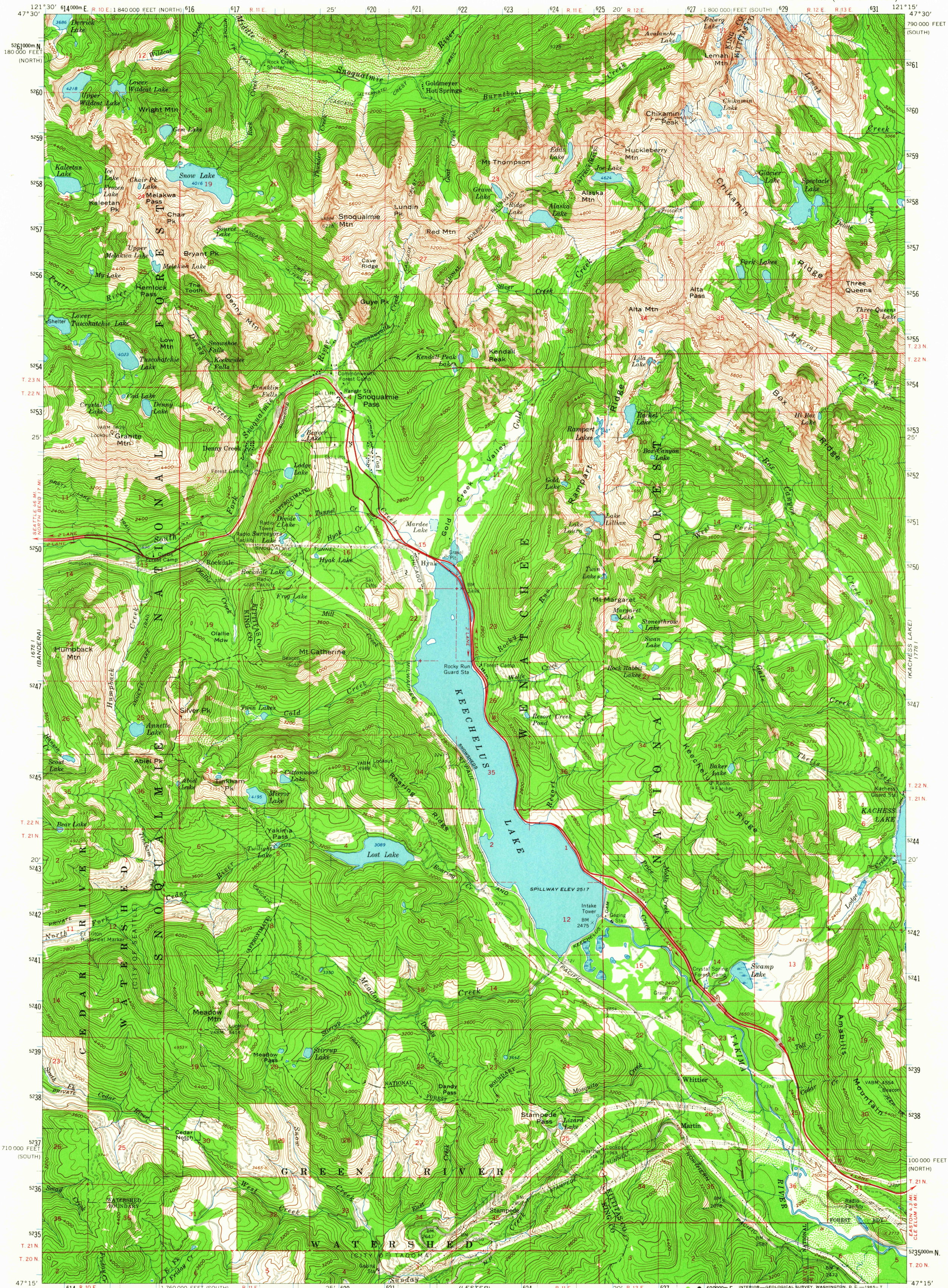


UNITED STATES
DEPARTMENT OF THE INTERIOR
GEOLOGICAL SURVEY

SNOQUALMIE PASS QUADRANGLE
WASHINGTON
15 MINUTE SERIES (TOPOGRAPHIC)



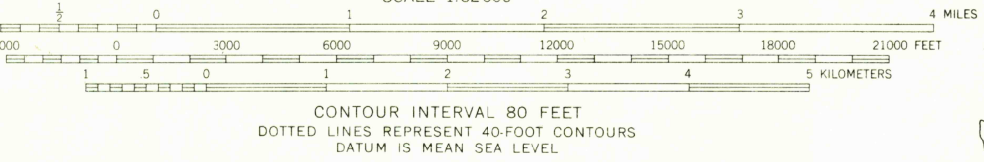
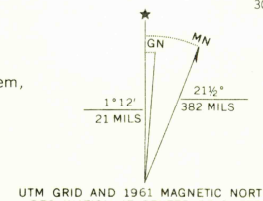
Mapped, edited, and published by the Geological Survey

Control by USGS and USC&GS

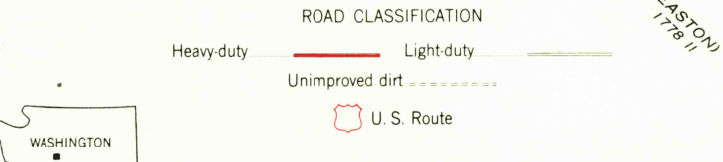
Topography by photogrammetric methods from aerial photographs taken 1957. Field checked 1961

Polyconic projection. 1927 North American datum
10,000-foot grids based on Washington coordinate system,
south zone and north zone
1000-meter Universal Transverse Mercator grid ticks,
zone 10, shown in blue

Area covered by dashed light-blue pattern is subject
to controlled inundation by Kachess Dam to 2257 feet



CONTOUR INTERVAL 80 FEET
DOTTED LINES REPRESENT 40-FOOT CONTOURS
DATUM IS MEAN SEA LEVEL



SNOQUALMIE PASS, WASH.
N4715-W12115/15

1961

AMS 1778 IV-SERIES V791

FOR SALE BY U. S. GEOLOGICAL SURVEY, DENVER, COLORADO 80225, OR WASHINGTON, D. C. 20242
A FOLDER DESCRIBING TOPOGRAPHIC MAPS AND SYMBOLS IS AVAILABLE ON REQUEST

Historical File
Topographic Division

18,855

MAY 3 1965