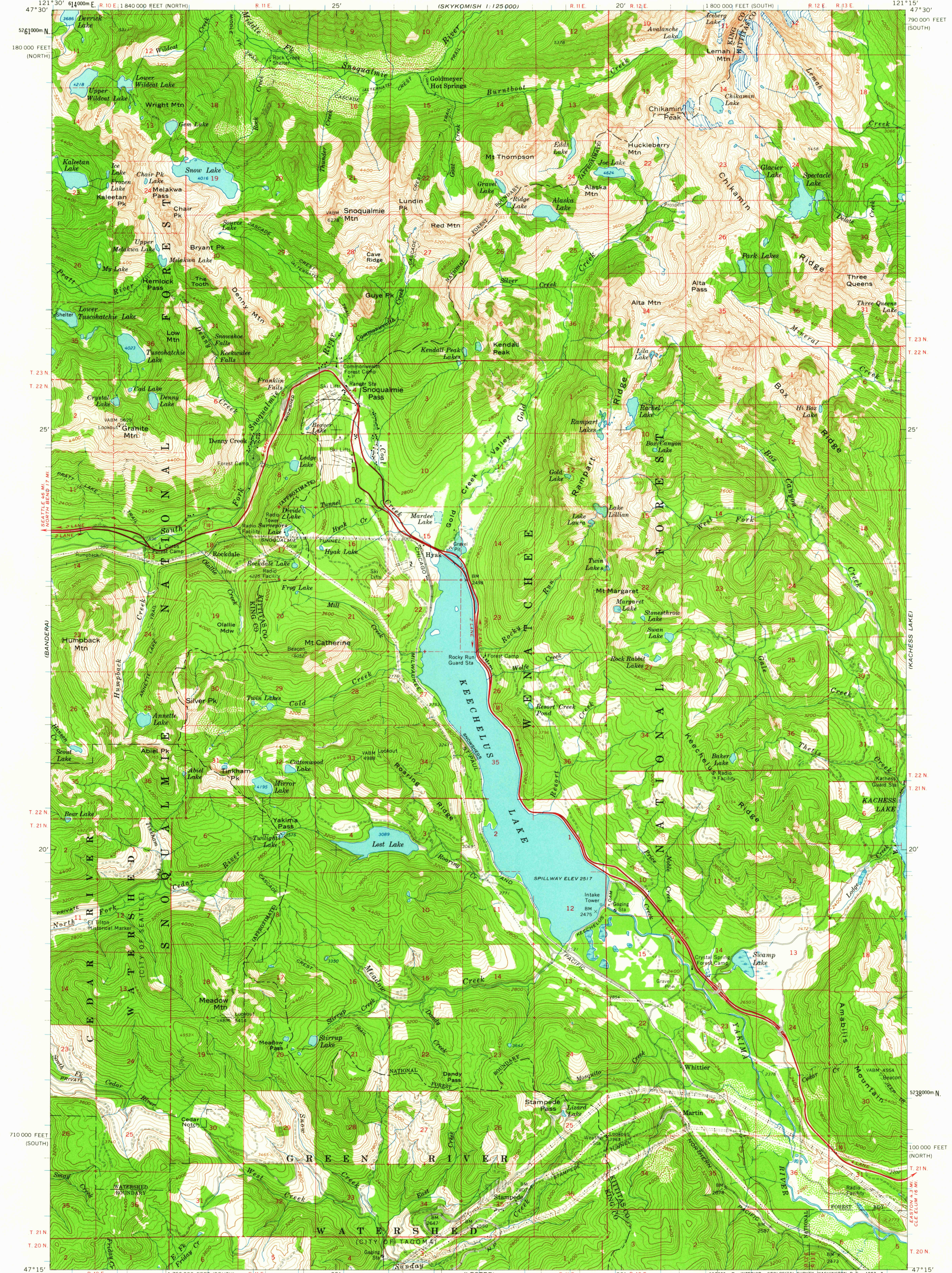
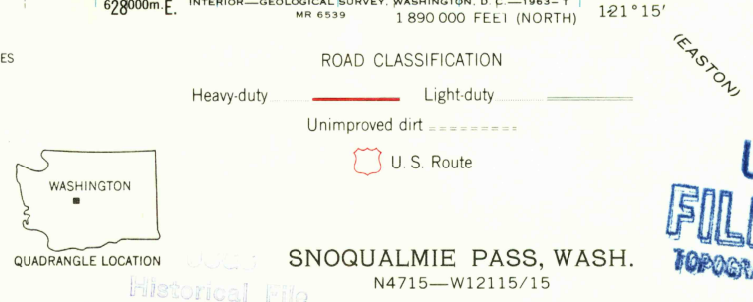
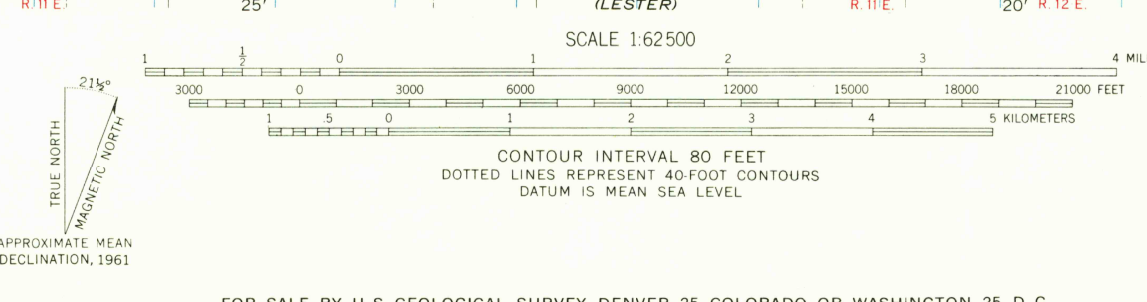


(MOUNT SU)

(SKYKOMISH 1:125 000)



Mapped, edited, and published by the Geological Survey  
Control by USGS and USC&GS  
Topography by photogrammetric methods from aerial  
photographs taken 1957. Field checked 1961  
Polyconic projection, 1927 North American datum  
10,000-foot grids based on Washington coordinate system,  
south zone and north zone  
1000-meter Universal Transverse Mercator grid ticks,  
zone 10, shown in blue  
Area covered by dashed light-blue pattern is subject  
to controlled inundation by Kachess Dam to 2257 feet



U.S.G.S.  
FILE COPY  
TOPOGRAPHIC DIVISION

JUL 11 1963