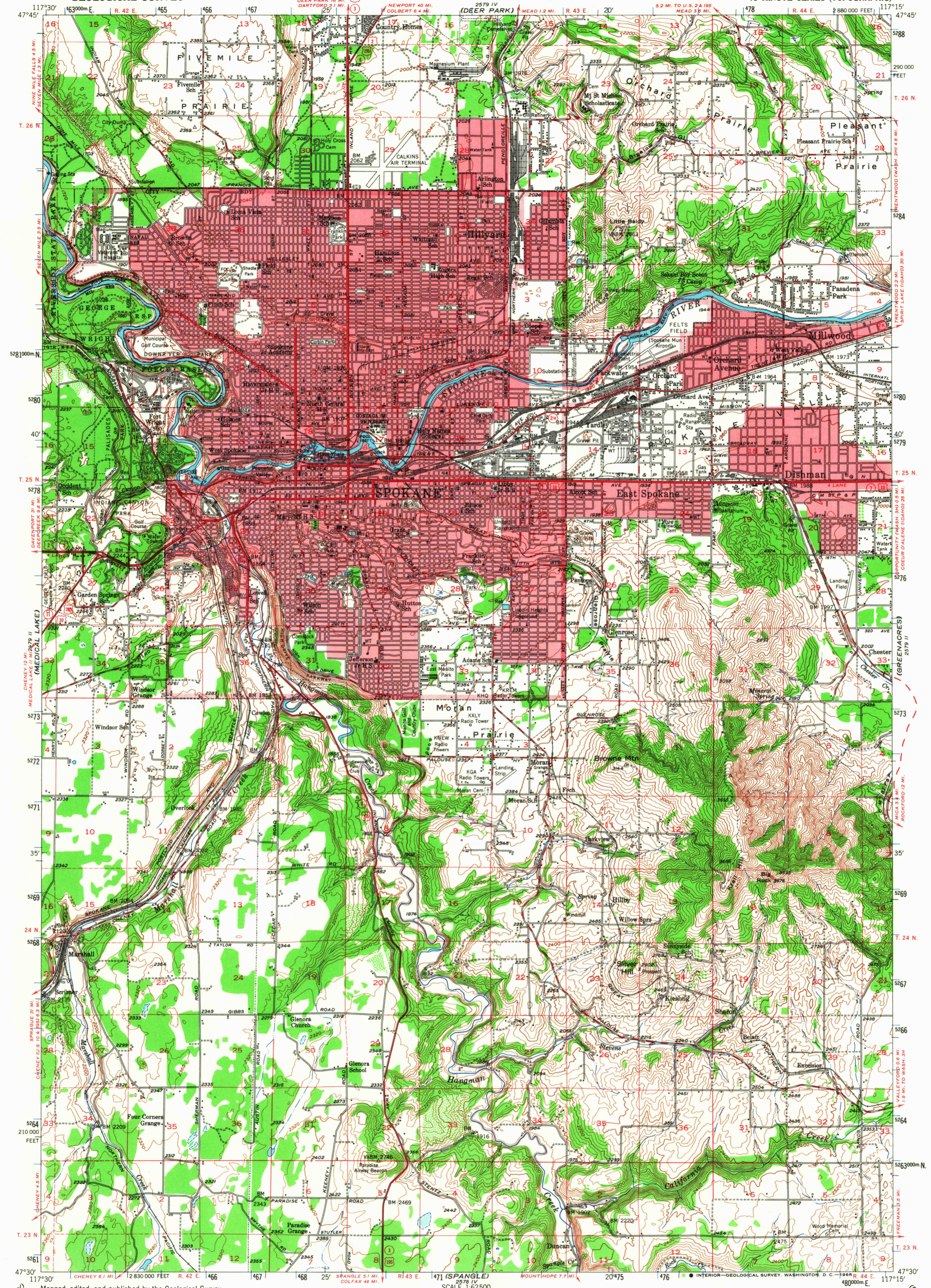


(CLAYTON)

UNITED STATES
DEPARTMENT OF THE INTERIOR
GEOLOGICAL SURVEY

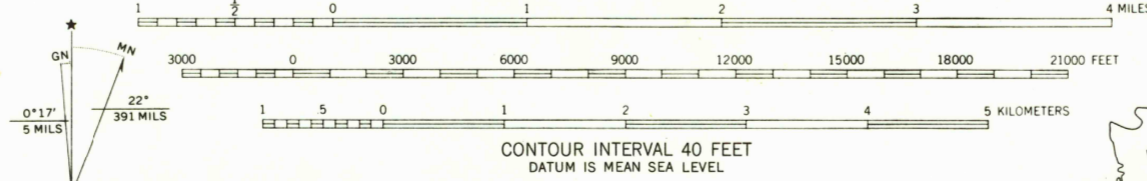
SPOKANE QUADRANGLE
WASHINGTON-SPOKANE CO.
15 MINUTE SERIES (TOPOGRAPHIC)

(MT. SPOKANE)



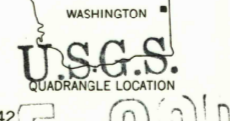
(CHENEY)

Mapped, edited, and published by the Geological Survey
Control by USGS and USC&GS
Compiled in 1953 from 1:24 000 scale maps of the Spokane NE,
Spokane NW, Spokane SW, and Spokane SE 7.5 minute
quadrangles, surveyed in 1950
Polyconic projection. 1927 North American datum
10,000-foot grid based on Washington coordinate system,
north zone
Red tint indicates areas in which only landmark buildings are shown
Dashed land lines indicate approximate locations
1000-meter Universal Transverse Mercator grid ticks,
zone 11, shown in blue



CONTOUR INTERVAL 40 FEET
DATUM IS MEAN SEA LEVEL
THIS MAP COMPLIES WITH NATIONAL MAP ACCURACY STANDARDS
FOR SALE BY U. S. GEOLOGICAL SURVEY, DENVER, COLORADO 80225 OR WASHINGTON, D. C. 20542
A FOLDER DESCRIBING TOPOGRAPHIC MAPS AND SYMBOLS IS AVAILABLE ON REQUEST

ROAD CLASSIFICATION
Heavy-duty 4 LANE & LANE Light-duty 2 LANE & LANE
Medium-duty 4 LANE & LANE Unimproved dirt -----
U. S. Route ○ State Route ○



This area is also covered by 1:24 000 scale maps of
Spokane NE, Spokane NW, Spokane SW, and Spokane SE
7.5 minute quadrangles, surveyed in 1950
SPOKANE, WASH.
N4730-W11715/15

1950
AMS 2579 III-SERIES V791

5060
MAY 3 1968
TOPOGRAPHIC DIVISION

(FAIRFIELD)