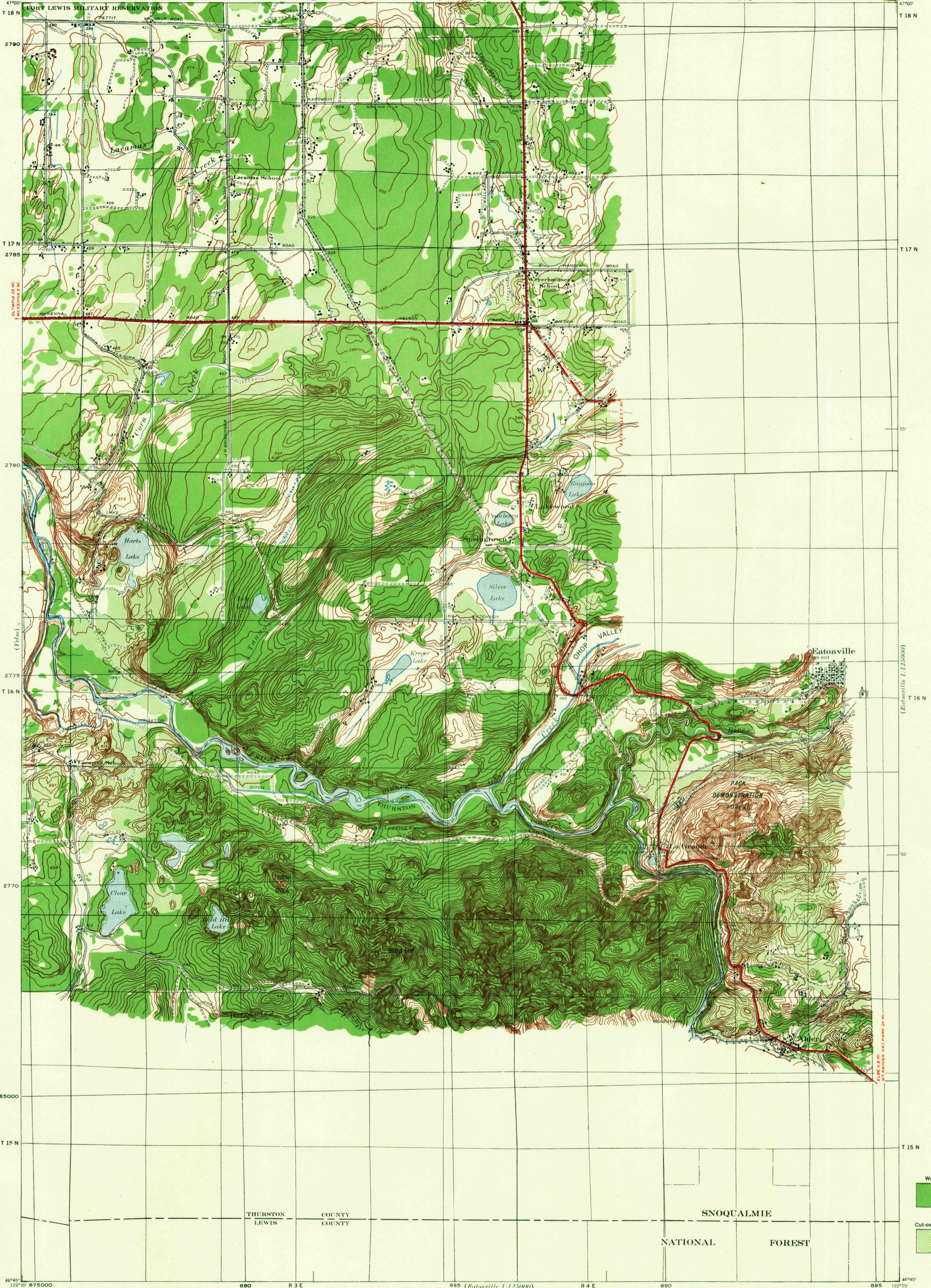
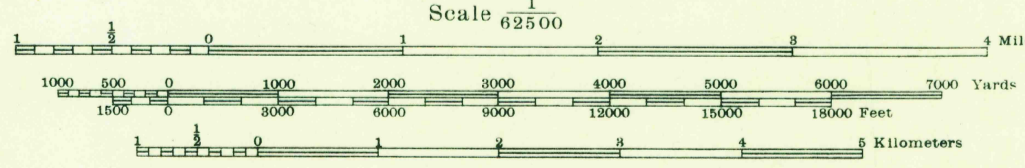


Advance Sheet



Prepared under the direction of the Chief of Engineers, U. S. Army, 1940.
Control by U. S. Coast and Geodetic Survey, 1924 to 1935, U. S. Geological
Survey, 1912 to 1914 and 29th Engineers, U. S. Army, 1937-38.
Topography by 29th Engineers, U. S. Army, 1940, using Multiplex Aero
Projectors.
T3-A (5 lens) photography by 91st Observation Squadron, Air Corps,
U. S. Army, 1938.
Polyconic Projection, North American Datum 1927.

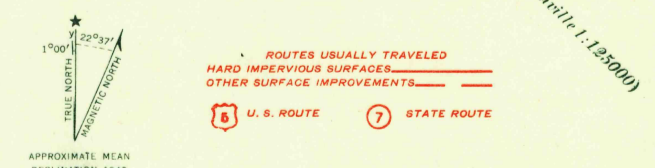


Contour interval 20 feet
Datum is mean sea level (1929 Adj.)

FIVE THOUSAND YARD GRID COMPUTED FROM "GRID SYSTEM FOR PROGRESSIVE MAPS
IN THE U. S." ZONE G, U. S. C. & G. S. SPECIAL PUBLICATION NO. 59
(THE LAST THREE DIGITS OF THE GRID NUMBERS ARE OMITTED)

NOTE: OFFICERS USING THIS MAP WILL MARK HEREON CORRECTIONS AND ADDITIONS WHICH COME
TO THEIR ATTENTION AND MAIL DIRECT TO "THE CHIEF OF ENGINEERS, WASHINGTON, D. C."

USCS
Historical File
Topographic Division



APPROXIMATE MEAN
DECLINATION 1940
ANNUAL MAGNETIC CHANGE 2'
DECREASE

TANWAX LAKE WASH
N4645-W 2215/15 U. S. G. S.
FILE COPY
Inspection and Editing

*O'hop Valley
1942-49*