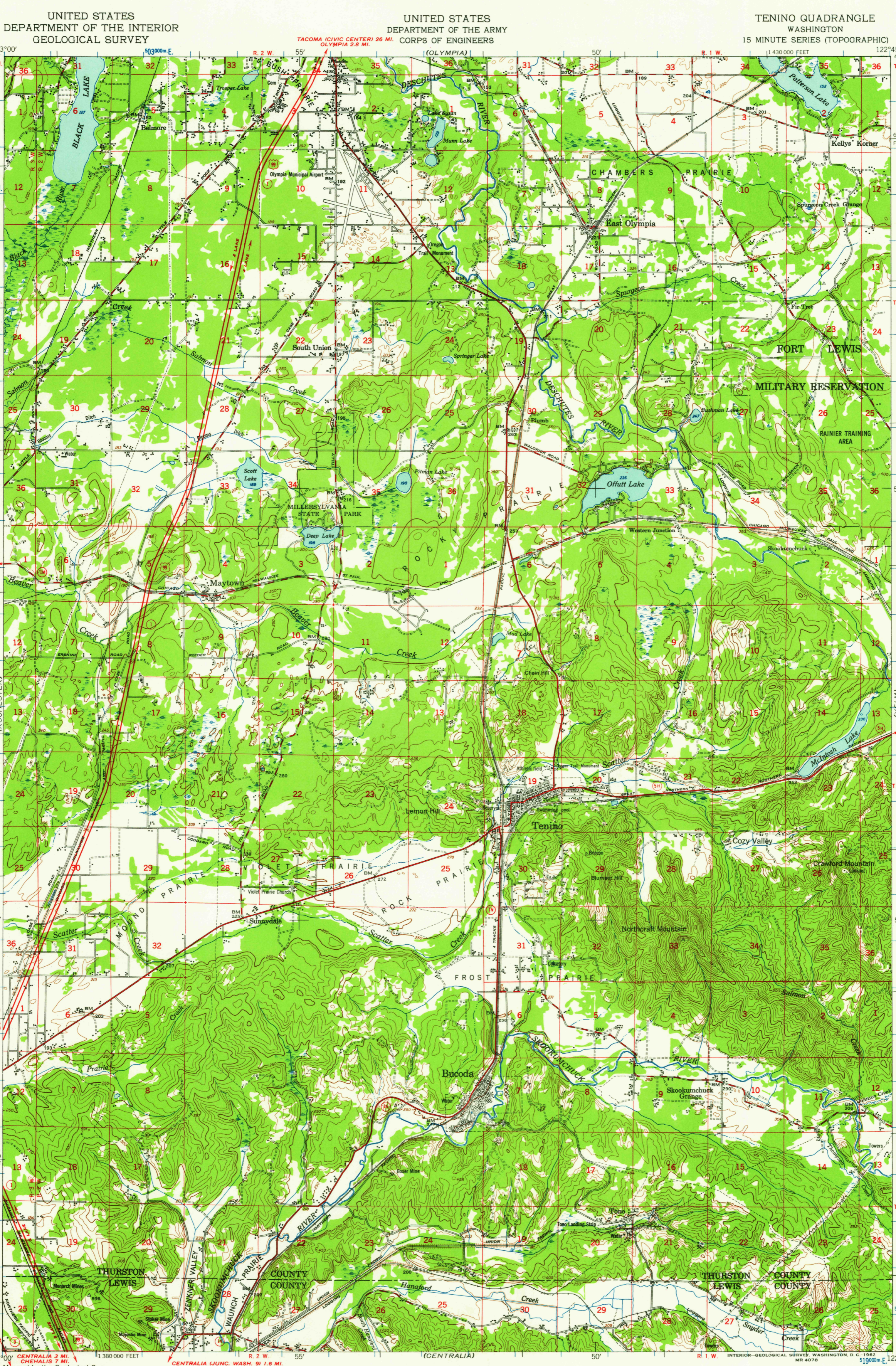
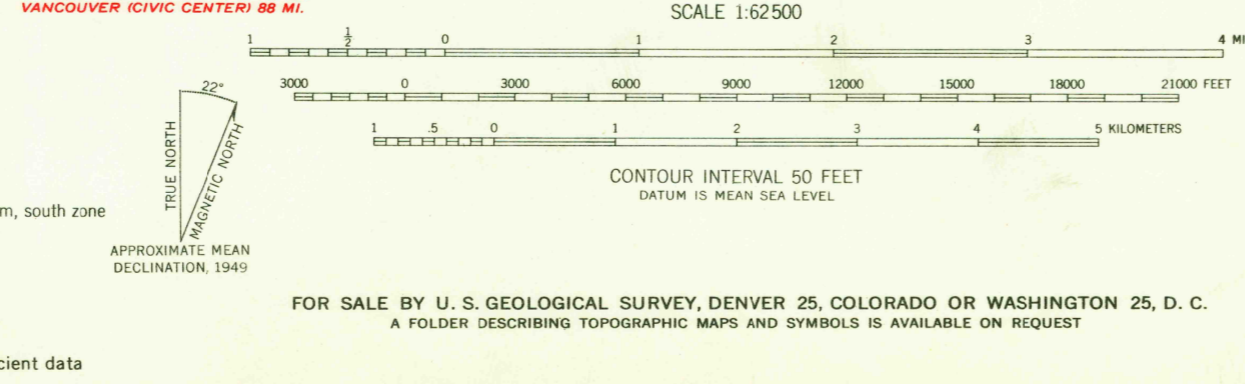


(SHELTON)
123°00'
47°00'
T. 18 N.
502000m N.
T. 17 N.
55'
T. 16 N.
50'
T. 15 N.
540 000 FEET
T. 15 N.
46°45'
123°00'



TENINO QUADRANGLE
WASHINGTON
15 MINUTE SERIES (TOPOGRAPHIC)
122°45'
47°00'
T. 18 N.
610 000 FEET
T. 17 N.
55'
T. 16 N.
50'
T. 15 N.
517800m N.
46°45'
122°45'

UNITED STATES
DEPARTMENT OF THE INTERIOR
GEOLOGICAL SURVEY
TACOMA (CIVIC CENTER) 26 MI.
OLYMPIA 2.8 MI.
UNITED STATES
DEPARTMENT OF THE ARMY
CORPS OF ENGINEERS
TENINO QUADRANGLE
WASHINGTON
15 MINUTE SERIES (TOPOGRAPHIC)
1430 000 FEET
ROCHESTER JUNC. WASH. 91.8 MI.
LITTLE ROCK 68 MI.
ELMA JUNC. U.S. 410.28 MI.
GRAND MOUND 52 MI.
CENTRALIA 3 MI.
CHEHALIS 7 MI.
VANCOUVER (CIVIC CENTER) 88 MI.
Map by the Geological Survey
Revised by the Army Map Service
Published for civil use by the Geological Survey
Control by USGS, USC&GS, and USCE
Topography by planetable surveys 1942
Planimetric detail revised from aerial photographs
taken 1947. Field check 1949
Polyconic projection. 1927 North American datum
10,000-foot grid based on Washington coordinate system, south zone
1000-meter Universal Transverse Mercator grid ticks,
zone 10, shown in blue
No distinction is made between barns, dwellings,
commercial and industrial buildings
Unchecked elevations are shown in brown
Certain land lines are omitted because of insufficient data



ROAD CLASSIFICATION
Heavy-duty ——— Light-duty ———
Medium-duty ——— Unimproved dirt - - - - -
U. S. Route State Route
QUADRANGLE LOCATION
WASHINGTON
TENINO, WASH.
N4645-W12245/15
1949
USGS
Historical File
Topographic Division

(ANDERSON ISLAND)
(Y. ELM)
RAINIER 3.2 MI.
VELM 8.8 MI.
(ADNA)
JAN 22 1963
4156
USGS
Historical File
Topographic Division