

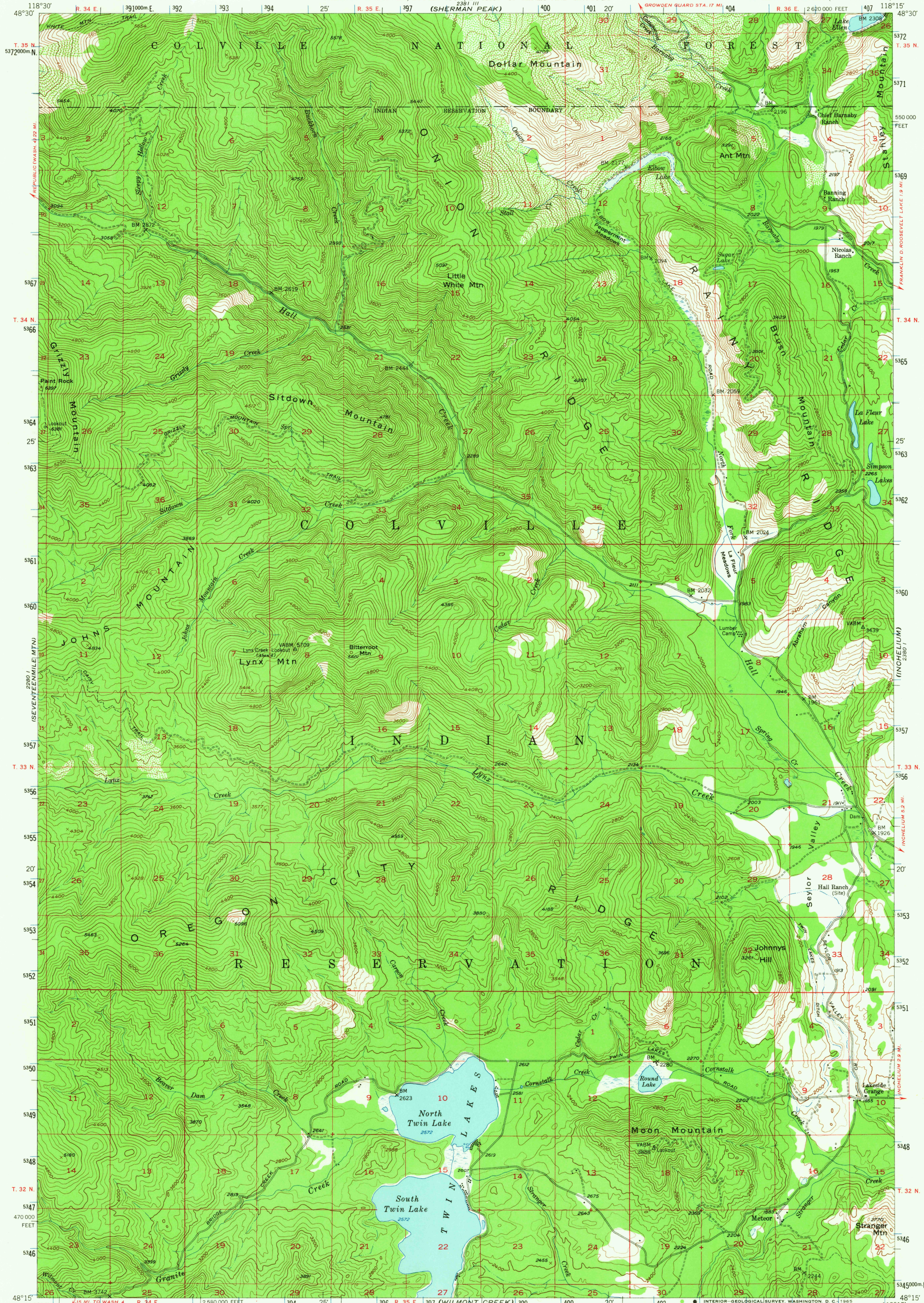
(REPUBLIC)
2380 II

UNITED STATES
DEPARTMENT OF THE INTERIOR
GEOLOGICAL SURVEY

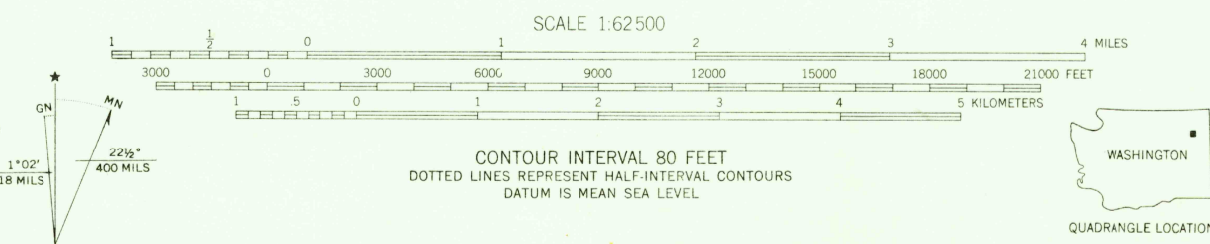
STATE OF WASHINGTON
DEPARTMENT OF CONSERVATION AND DEVELOPMENT
W. A. GALBRAITH, DIRECTOR
SHELDON L. GLOVER, SUPERVISOR, DIVISION OF MINES AND GEOLOGY
(SHERMAN PEAK)

TWIN LAKES QUADRANGLE
WASHINGTON-FERRY CO.
15 MINUTE SERIES (TOPOGRAPHIC)

(KETTLE FALLS)
2380 II



Mapped, edited, and published by the Geological Survey
Control by USGS and USC&GS
Topography from aerial photographs by multiplex methods
Aerial photographs taken 1946. Field check 1952
Polyconic projection. 1927 North American datum
10,000-foot grid based on Washington coordinate system, north zone
Dashed land lines indicate approximate locations
Unchecked elevations are shown in brown
1000-meter Universal Transverse Mercator grid ticks,
zone 11, shown in blue



ROAD CLASSIFICATION
Heavy-duty 4 LANE 6 LANE Light-duty
Medium-duty 4 LANE 6 LANE Unimproved dirt
U. S. Route State Route

THIS MAP COMPLIES WITH NATIONAL MAP ACCURACY STANDARDS
FOR SALE BY U. S. GEOLOGICAL SURVEY, DENVER, COLORADO 80225 OR WASHINGTON, D. C. 20242
A FOLDER DESCRIBING TOPOGRAPHIC MAPS AND SYMBOLS IS AVAILABLE ON REQUEST

TWIN LAKES, WASH.
N4815-W11815/15
1952

USGS
Historical File
Topographic Division

OCT 1 4 1965

2205
U.S.G.S.

FILE COPY
TOPOGRAPHIC DIVISION

AMS 2380 IV-SERIES V791