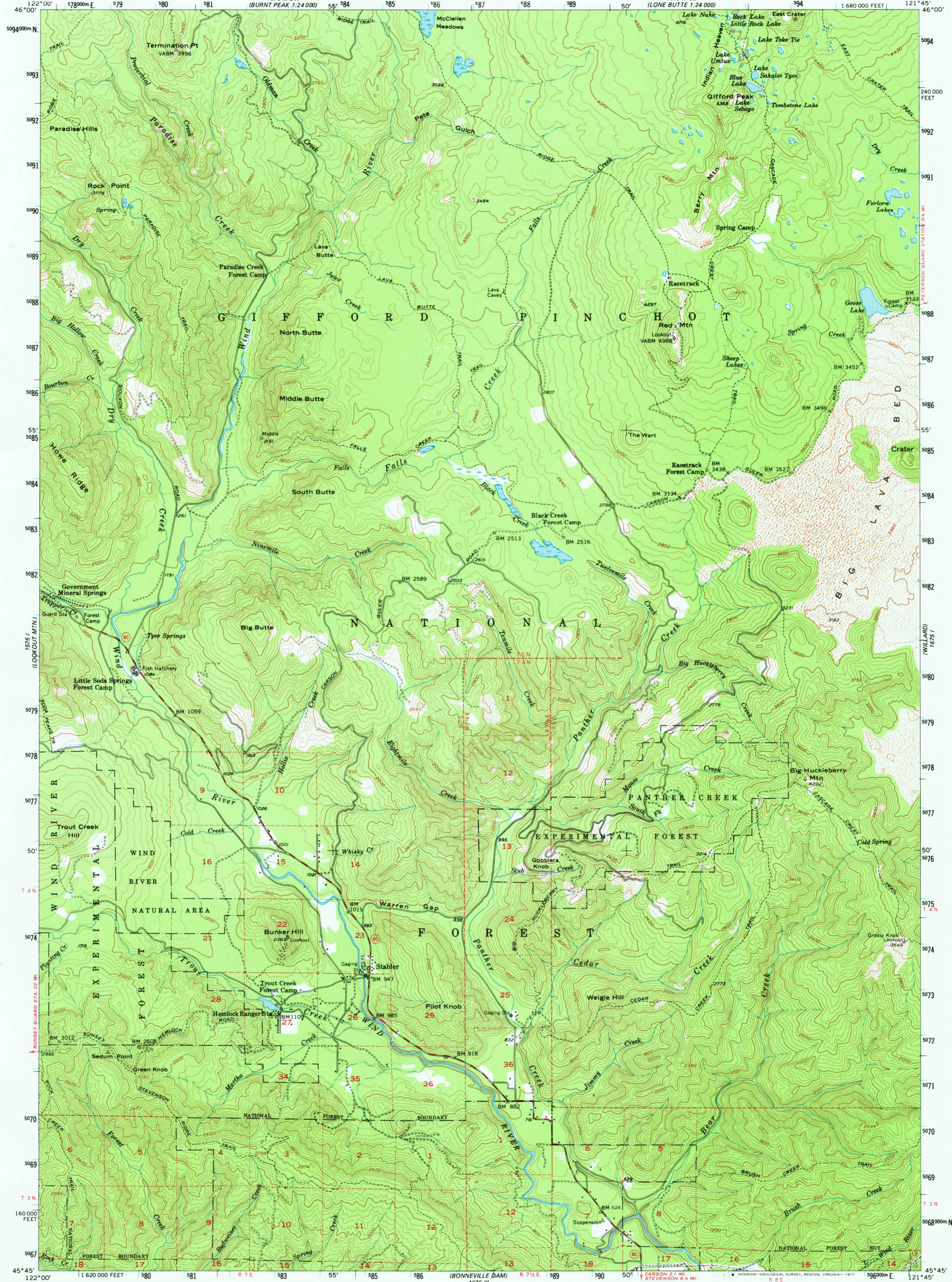


122°00' 46"00" W
578000m E

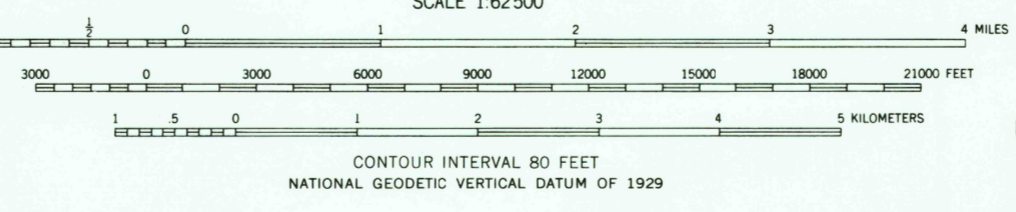
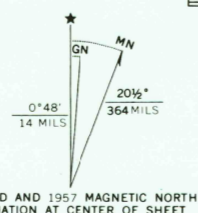
UNITED STATES
DEPARTMENT OF THE INTERIOR
GEOLOGICAL SURVEY

WIND RIVER QUADRANGLE
WASHINGTON-SKAMANIA CO.
15 MINUTE SERIES (TOPOGRAPHIC)

1676 III SW
1:24 000
(SLEEPING BEAUTY)



Mapped, edited, and published by the Geological Survey
Control by USGS and USC&GS
Topography from aerial photographs by multiplex methods
Aerial photographs taken 1955. Field check 1957
Polyconic projection. 1927 North American datum
10,000-foot grid based on Washington coordinate system,
south zone
1000-meter Universal Transverse Mercator grid ticks,
zone 10, shown in blue
Dashed land lines indicate approximate locations
Unchecked elevations are shown in brown



ROAD CLASSIFICATION
Medium duty ——— Light duty ———
Unimproved dirt - - - - - State Route ○

FOR SALE BY U.S. GEOLOGICAL SURVEY, DENVER, COLORADO 80225, OR RESTON, VIRGINIA 22092
A FOLDER DESCRIBING TOPOGRAPHIC MAPS AND SYMBOLS IS AVAILABLE ON REQUEST

WIND RIVER, WASH.
N4545-W12145/15
1957

USGS
Historical File
Topographic Division

AMS 1675 IV SERIES V791

SEP 26 1977

4050