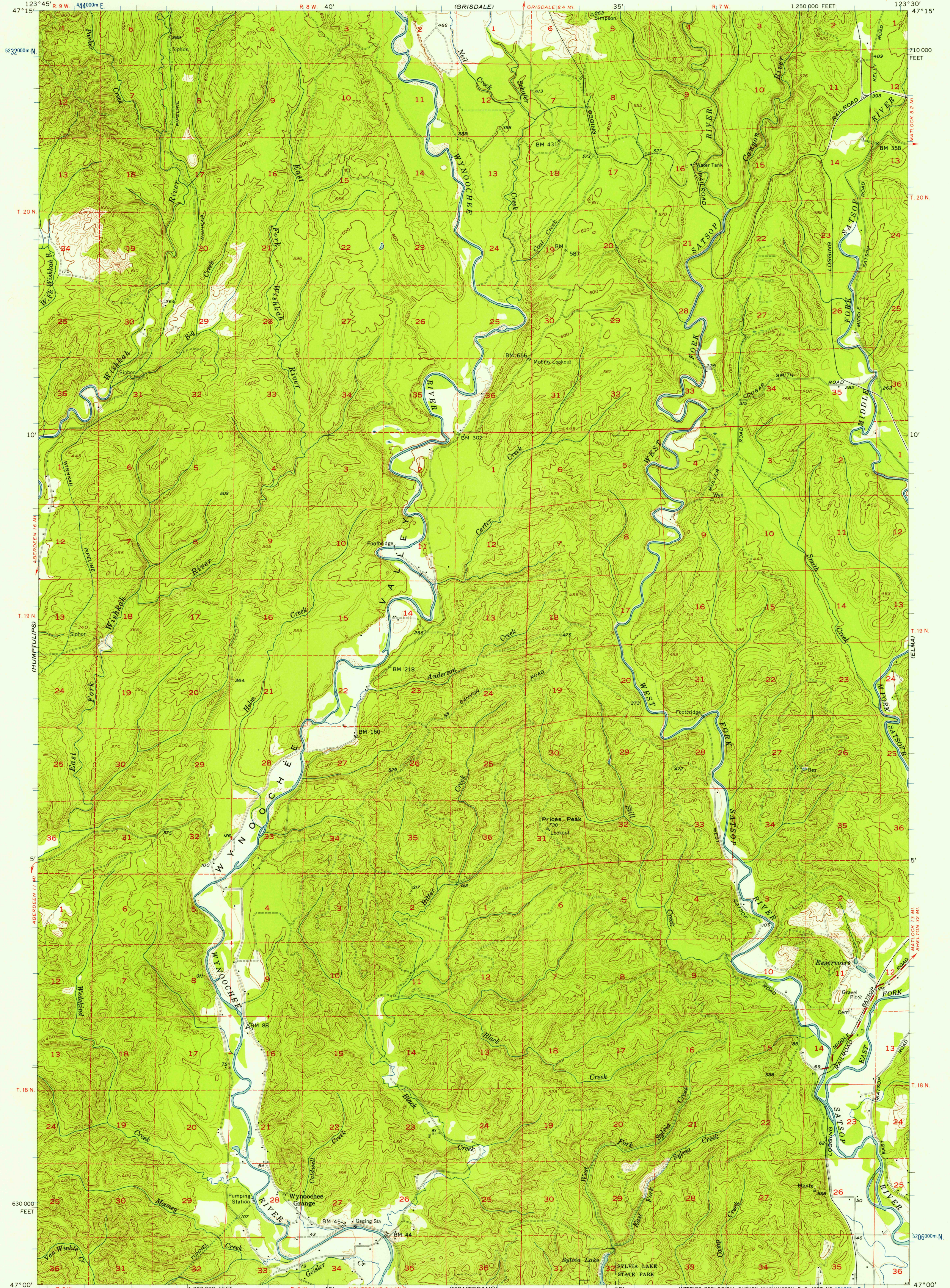
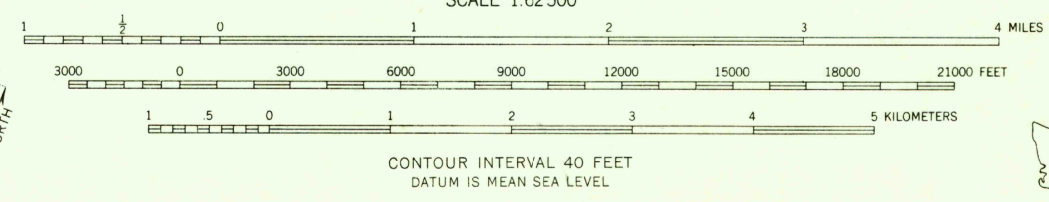


UNITED STATES
DEPARTMENT OF THE INTERIOR
GEOLOGICAL SURVEY

WYNOOCHEE VALLEY QUADRANGLE
WASHINGTON-GRAYS HARBOR CO.
15 MINUTE SERIES (TOPOGRAPHIC)



Mapped, edited, and published by the Geological Survey
Control by USGS, USC&GS, and USCE
Topography from aerial photographs by photogrammetric methods
Aerial photographs taken 1953. Advance field check 1955
Polyconic projection. 1927 North American datum
10,000-foot grid based on Washington coordinate system, south zone
1000-meter Universal Transverse Mercator grid ticks,
zone 10, shown in blue
Dashed land lines indicate approximate locations
Unchecked elevations are shown in brown



ROAD CLASSIFICATION
Medium-duty ——— Light-duty ———
Unimproved dirt ———



USGS WYNOOCHEE VALLEY, WASH.
N4700-W12330/15
Historical File
Topographic Division
1955

FOR SALE BY U. S. GEOLOGICAL SURVEY, DENVER 2, COLORADO OR WASHINGTON 25, D. C.
A FOLDER DESCRIBING TOPOGRAPHIC MAPS AND SYMBOLS IS AVAILABLE ON REQUEST

NOV 12 1957
1930