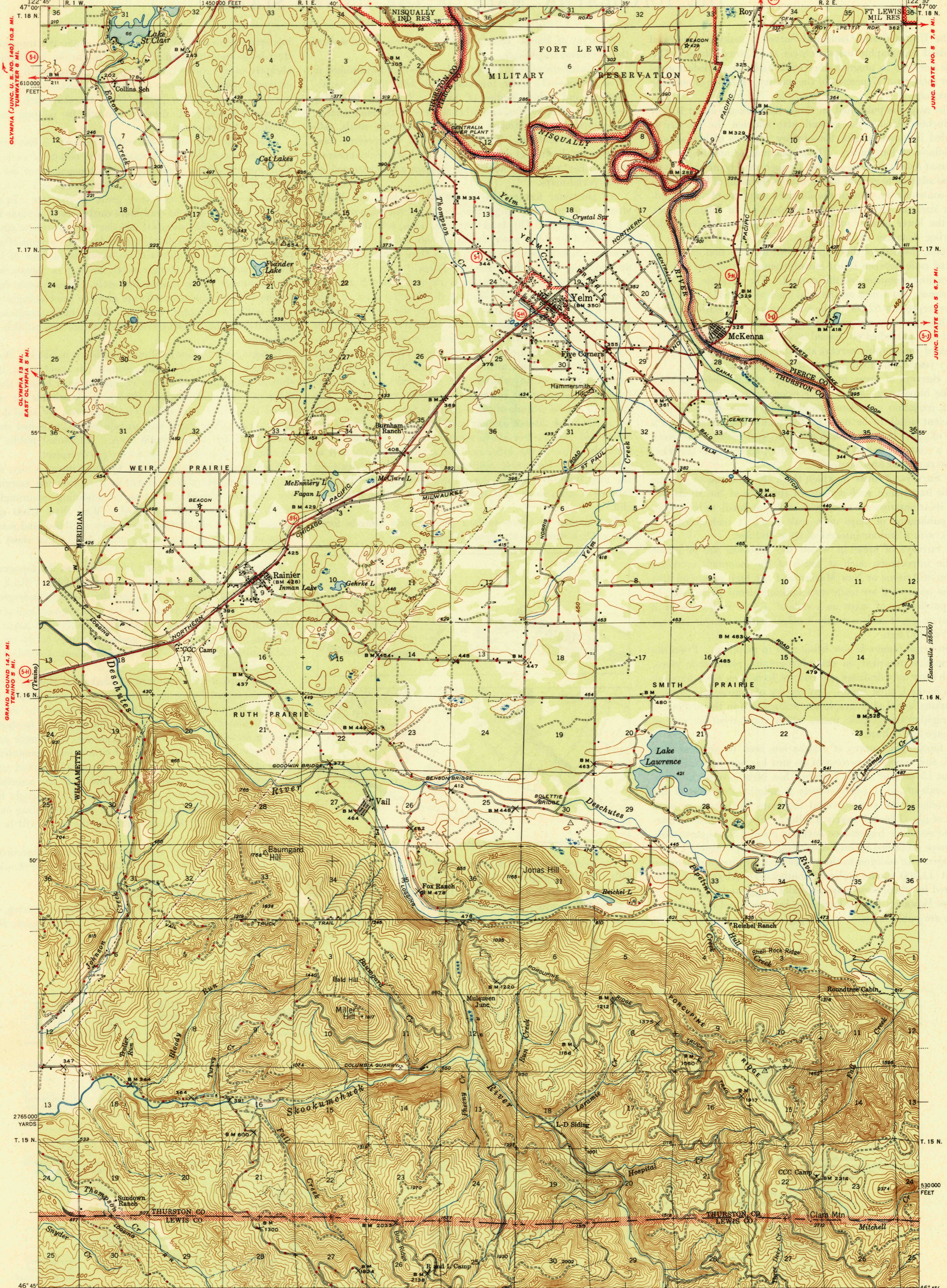


U. S. G. S.
FILE COPY
Illustration and Editing.

UNITED STATES
DEPARTMENT OF THE INTERIOR
GEOLOGICAL SURVEY

WAR DEPARTMENT
CORPS OF ENGINEERS, U. S. ARMY

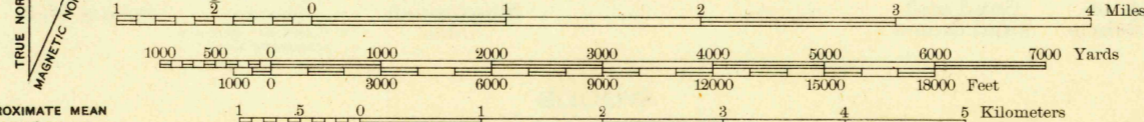
WASHINGTON
YELM QUADRANGLE
15-MINUTE SERIES



Topography by S. C. Kain, Ralph Evans, H. E. Hammond,
F. J. Lawler, E. D. Davis, Hal Shelton, and A. C. Stephens.
Surveyed in 1942

Scale 62500
1:62,500

Polyconic projection. 1927 North American datum
5000 yard grid based on U. S. zone system. G
10000 foot grid based on Washington (South)
rectangular coordinate system



Contour interval 50 feet
Datum is mean sea level

ROAD CLASSIFICATION
1944
Dependable hard surface
heavy-duty road
Secondary hard surface
all weather road
Loose-surface, graded
Unsurfaced, graded
dry weather roads
Dirt road
U. S. Route 15
State Route 28
More than two lanes indicated along road with tick at point of change

YELM, WASH.
Edition of 1944
N 4645-W 12230/15

Historical File
Topographic Division

FILE COPY
Illustration and Editing.

JUL 27 1944

5895