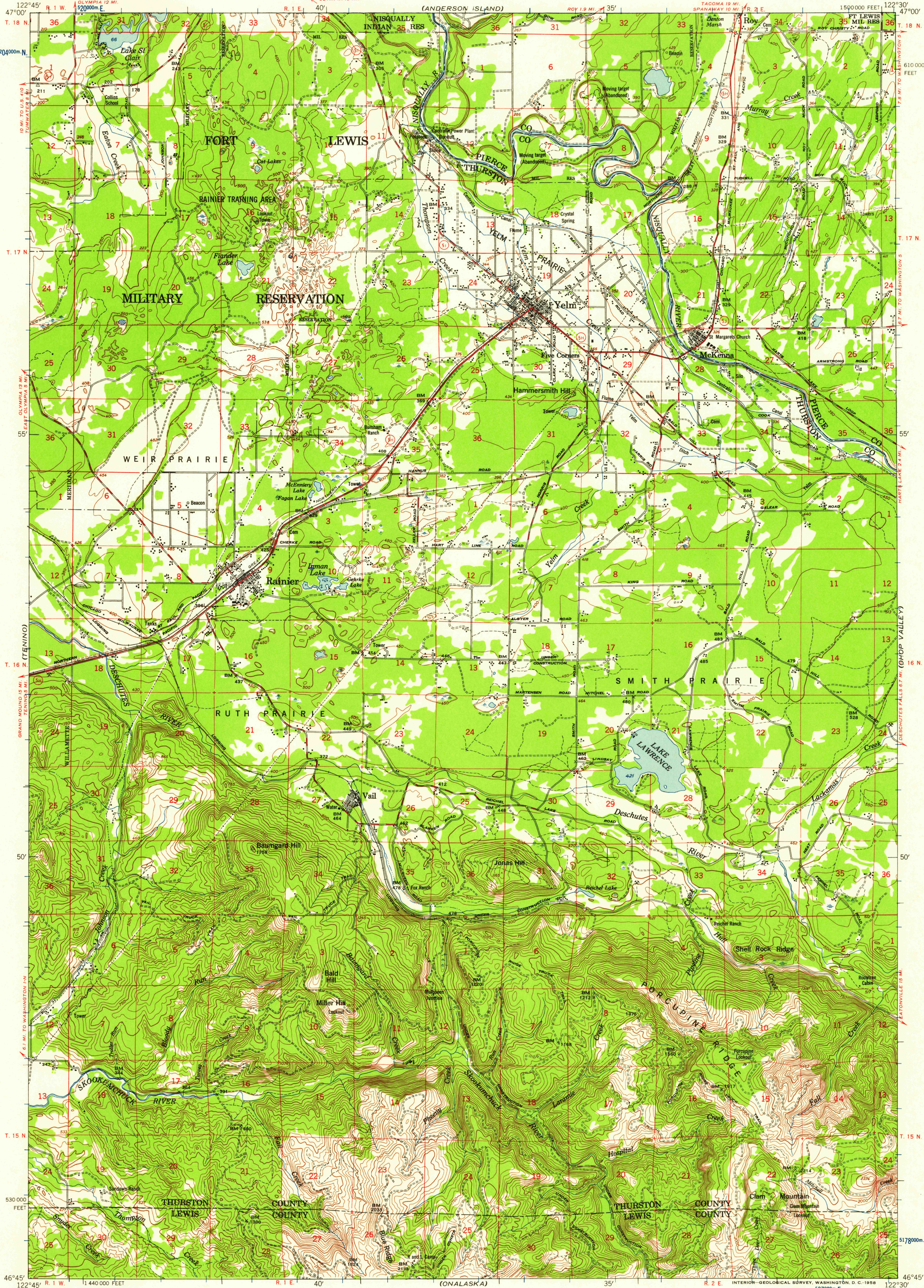


UNITED STATES
DEPARTMENT OF THE INTERIOR
GEOLOGICAL SURVEY

UNITED STATES
DEPARTMENT OF THE ARMY
CORPS OF ENGINEERS
(ANDERSON ISLAND)

YELM QUADRANGLE
WASHINGTON
15 MINUTE SERIES (TOPOGRAPHIC)



Map by the Geological Survey
Revised by the Army Map Service
Published for civil use by the Geological Survey
Control by USGS, USC&GS, and USCE

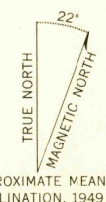
Topography by planetable surveys 1942
Planimetric detail revised from aerial photographs
taken 1947. Field check 1949

Polyconic projection. 1927 North American datum
10,000-foot grid based on Washington coordinate system, south zone
1000-meter Universal Transverse Mercator grid ticks,
zone 10, shown in blue

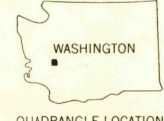
Red tint indicates area in which only
landmark buildings are shown

No distinction is made between barns, dwellings,
commercial and industrial buildings

Unchecked elevations are shown in brown



CONTOUR INTERVAL 50 FEET
DATUM IS MEAN SEA LEVEL



ROAD CLASSIFICATION
Heavy-duty ——— Light-duty ———
Medium-duty ——— Unimproved dirt ———
○ State Route

YELM, WASH.
N4645-W12230/15

U.S.G.S.
FILE COPY
TOPOGRAPHIC DIVISION

FOR SALE BY U. S. GEOLOGICAL SURVEY, DENVER, 2, COLORADO OR WASHINGTON 25, D. C.
A FOLDER DESCRIBING TOPOGRAPHIC MAPS AND SYMBOLS IS AVAILABLE ON REQUEST

AUG - 7 1958

2350