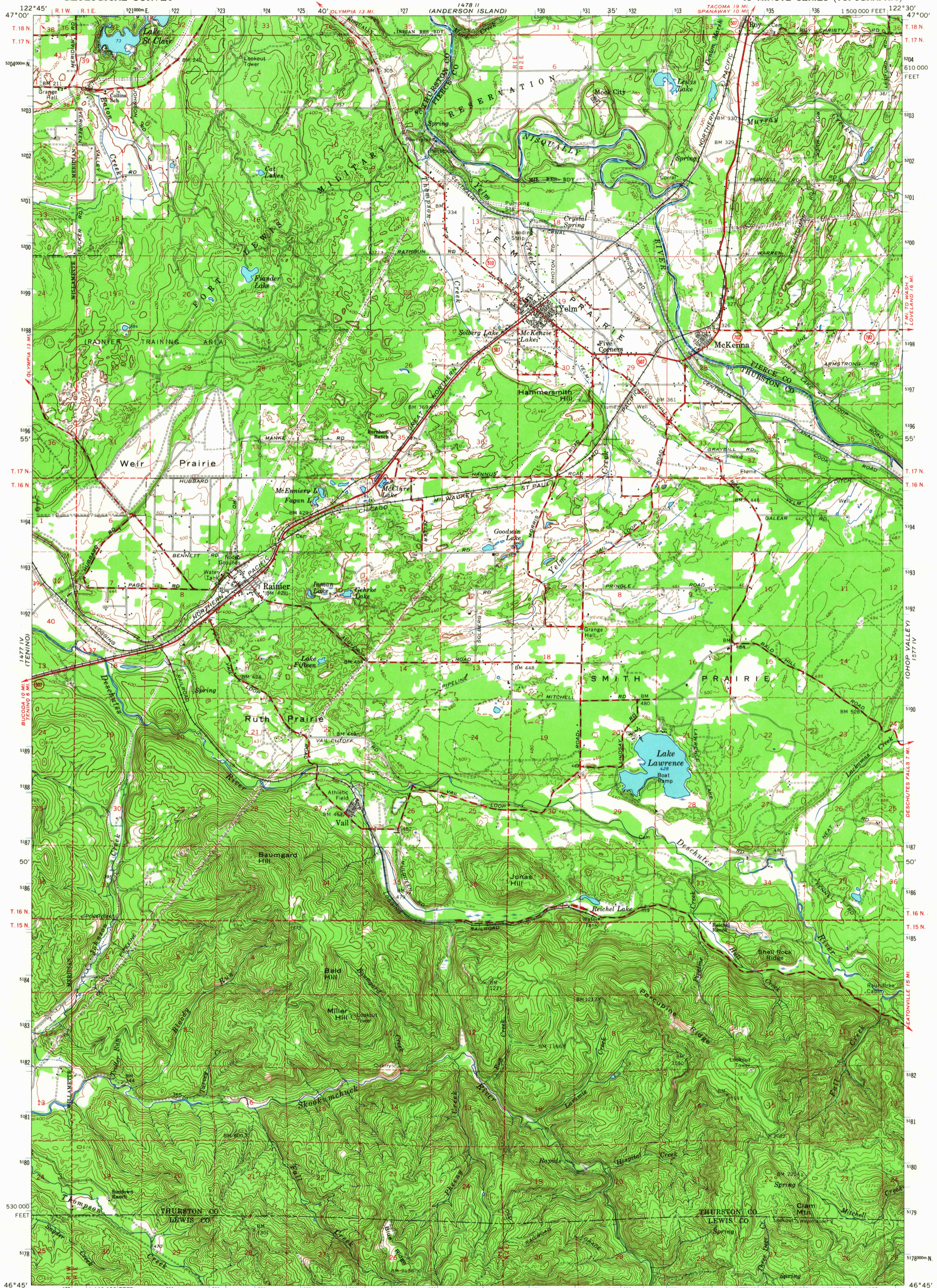


1477 II (CENTRAL)

UNITED STATES DEPARTMENT OF THE INTERIOR GEOLOGICAL SURVEY

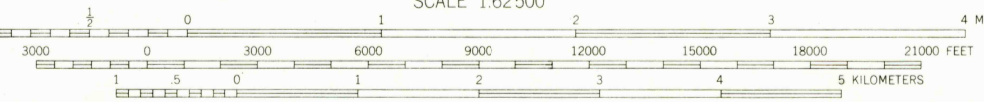
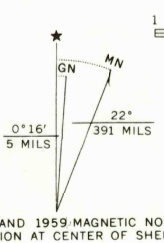
YELM QUADRANGLE WASHINGTON 15 MINUTE SERIES (TOPOGRAPHIC)

1578 I (TACOMA SOUTH)



1477 II (CENTRAL)

Mapped by the Army Map Service Published for civil use by the Geological Survey Control by USGS, USC&GS, and USCE Compiled in 1966 from 1:24 000-scale maps dated 1959 Polyconic projection. 1927 North American datum 10,000-foot grid based on Washington coordinate system, south zone 1000-meter Universal Transverse Mercator grid ticks, zone 10, shown in blue Land lines added and minor corrections by USGS 1965



CONTOUR INTERVAL 40 FEET DASHED LINES REPRESENT 20-FOOT CONTOURS DATUM IS MEAN SEA LEVEL

THIS MAP COMPLIES WITH NATIONAL MAP ACCURACY STANDARDS FOR SALE BY U. S. GEOLOGICAL SURVEY, DENVER, COLORADO 80225, OR WASHINGTON, D. C. 20242 A FOLDER DESCRIBING TOPOGRAPHIC MAPS AND SYMBOLS IS AVAILABLE ON REQUEST

ROAD CLASSIFICATION table with categories: Heavy-duty, Light-duty, Medium-duty, Unimproved dirt, and State Route.



YELM, WASH. N4645-W12230/15 1959

1578 I (TACOMA SOUTH)

1577 IV (CHOP VALLEY)

1577 IV (BUCCARA)

1577 IV (MORTON)

4825

APR 12 1968

AMS 1477 I-SERIES V791