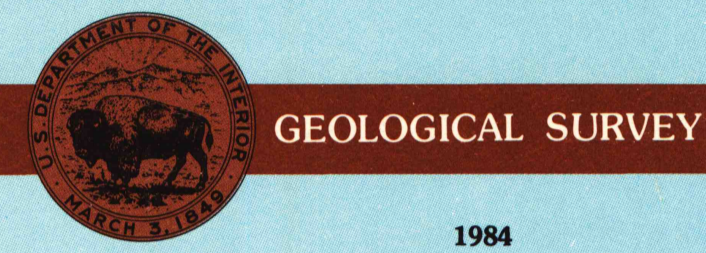


30 X 60 MINUTE QUADRANGLE SHOWING

- Elevations in meters
- Highways, roads and other manmade structures
- Water features
- Woodland areas
- Geographic names



Produced by the United States Geological Survey
 Compiled from USGS 1:24 000-scale topographic maps dated 1955-1984. Planimetry revised from aerial photographs taken 1982 and other source data. Revised information not field checked. Map edited 1984.
 Projection and 10 000-meter grid, zone 16, Universal Transverse Mercator
 25 000-foot grid ticks based on Wisconsin coordinate system, central and south zones
 1927 North American Datum
 To place on the predicted North American Datum 1983, move the projection lines 5 meters north and 8 meters east
 There may be private inholdings within the boundaries of the National or State reservations shown on this map

NATIONAL GEODETIC VERTICAL DATUM OF 1929 ELEVATIONS SHOWN TO THE NEAREST METER

THIS MAP COMPLIES WITH NATIONAL MAP ACCURACY STANDARDS

CONVERSION TABLE		DECLINATION DIAGRAM		ADJOINING MAPS		
Meters	Feet	Diagram showing magnetic declination		1	2	3
1	3.2808	19 11' 15" N		4	5	
2	6.5617	19 11' 15" N		6	7	8
3	9.8425	19 11' 15" N				
4	13.1234	19 11' 15" N				
5	16.4042	19 11' 15" N				
6	19.6850	19 11' 15" N				
7	22.9659	19 11' 15" N				
8	26.2467	19 11' 15" N				
9	29.5276	19 11' 15" N				
10	32.8084	19 11' 15" N				

To convert meters to feet multiply by 3.2808
 To convert feet to meters multiply by 0.3048

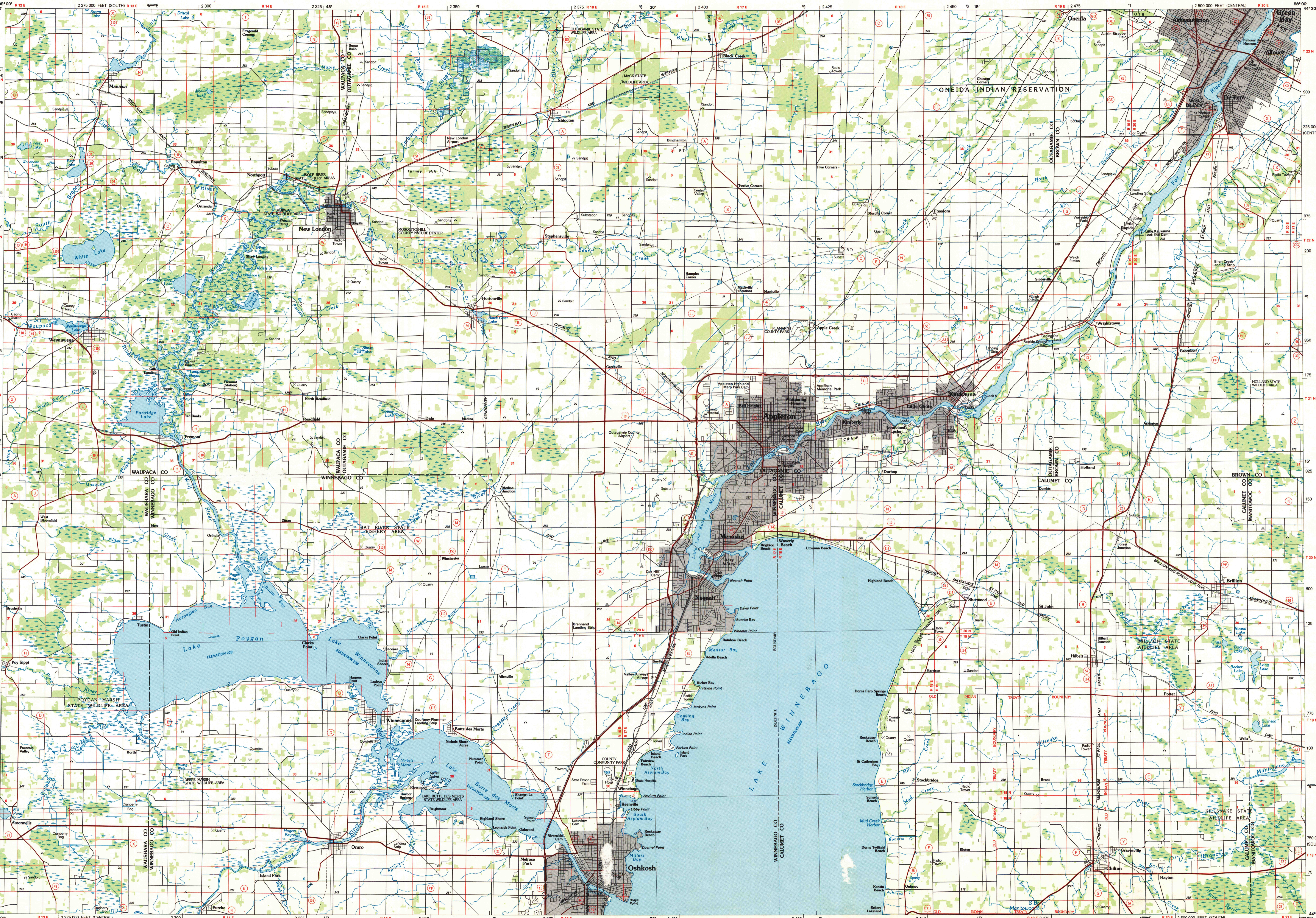
UTM grid convergence (GM) and 1984 magnetic declination (M) at center of map
 Diagram is approximate

Map Number	Name
1	Wausau
2	Shawano
3	Sturgeon Bay
4	Winconsin Rapids
5	Manitowish
6	Wisconsin Dells
7	Fond du Lac
8	Sheboygan

FOR SALE BY U.S. GEOLOGICAL SURVEY RESTON, VIRGINIA 22092

Topographic Map Symbols

- Primary highway, hard surface
- Secondary highway, hard surface
- Light duty road, principal street, hard or improved surface
- Other road or street, trail
- Route marker: Interstate, U.S., State
- Railroad: standard gage; narrow gage
- Bridge; overpass; underpass
- Tunnel: road, railroad
- Built up area, locality, elevation
- Airport: landing field; landing strip
- National boundary
- State boundary
- County boundary
- National or State reservation boundary
- Land grant boundary
- U.S. public lands survey range, township, section
- Range, township, section line, restricted
- Power transmission line, pipeline
- Dam; dam with lock
- Cemetery; building
- Windmill; water well; spring
- Mine shaft; adit or cave; mine, quarry, gravel pit
- Campground; picnic area; U.S. location monument
- Rune; cliff dwelling
- Distorted surface: strip mine, lava, sand
- Contours: index; intermediate; supplementary
- Bathymetric contours: index; intermediate
- Stream, lake; perennial; intermittent
- Rapids, large and small; falls, large and small
- Area to be submerged; marsh, swam
- Land subject to controlled inundation, woodland
- Scrub; mangrove
- Orchard; vineyard



NON-CIRCULATING

U.S. Regional Depository Copy DO NOT DISCARD JUN - 6 1985 2006-9/8 SET