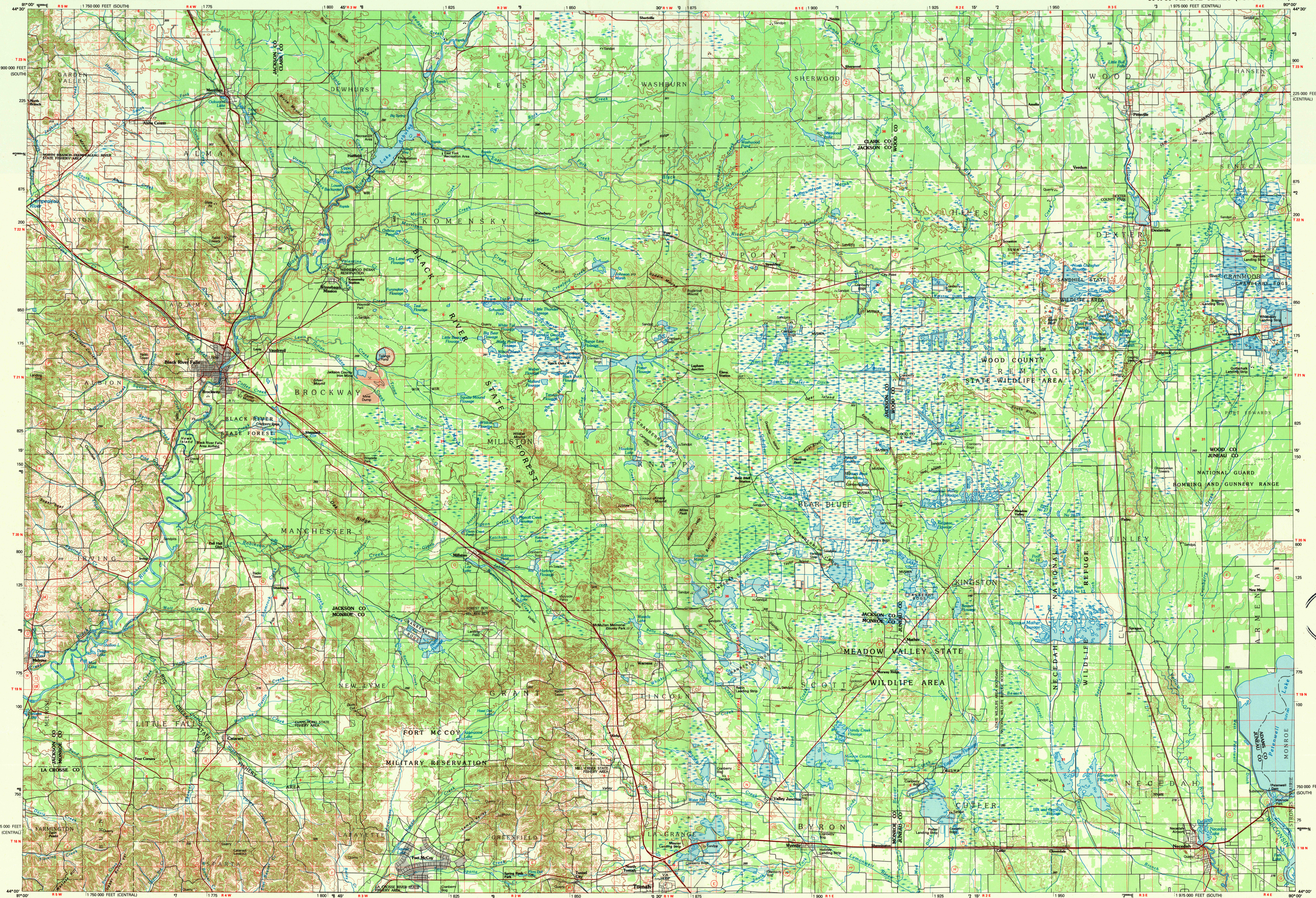


BLACK RIVER FALLS, WISCONSIN

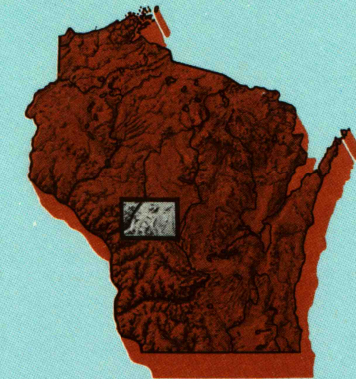
30 X 60 MINUTE SERIES (TOPOGRAPHIC)



Black River Falls

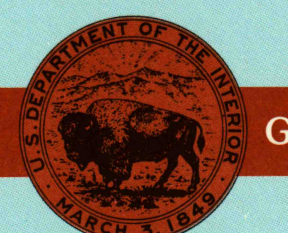
WISCONSIN

1:100 000-scale metric
topographic map



30 X 60 MINUTE QUADRANGLE
SHOWING

- Contours and elevations in meters
- Highways, roads and other manmade structures
- Water features
- Woodland areas
- Geographic names



GEOLOGICAL SURVEY

1985
PHOTOINSPECTED 1988

Produced by the United States Geological Survey

Compiled from USGS 1:24 000-scale topographic maps dated 1969-1984. Planimetry revised from aerial photographs taken 1980 and other source data. Revised information not field checked. Map edited 1985.

Projection and 10 000-meter grid, zone 15, Universal Transverse Mercator. 25 000-foot grid ticks based on Wisconsin coordinate system, central and south zones.

1927 North American Datum.

To place on the predicted North American Datum 1983, move the projection lines 6 meters north and 11 meters east.

There may be private inholdings within the boundaries of the National or State reservations shown on this map.

Map photoinspected 1988.
No major culture or drainage changes found.

CONTOUR INTERVAL 10 METERS
SUPPLEMENTAL CONTOURS 5 METERS
NATIONAL GEODETIC VERTICAL DATUM OF 1929
ELEVATIONS SHOWN TO NEAREST METER

THIS MAP COMPLIES WITH NATIONAL MAP ACCURACY STANDARDS

CONVERSION TABLE		DECLINATION DIAGRAM	ADJOINING MAPS	
Meters	Feet		1	2
1	3.2808		1	2
2	6.5617		4	
3	9.8425			
4	13.1234			
5	16.4042			
6	19.6850			
7	22.9659			
8	26.2467			
9	29.5275			
10	32.8084			
To convert meters to feet multiply by 3.2808		UTM grid convergence (GN) and true magnetic declination (MN) at center of map Diagram is approximate	1 Eau Claire 2 Marshfield 3 Wausau 4 Winona 5 Wisconsin Rapids 6 La Crosse 7 Sparta 8 Wisconsin Dells	
To convert feet to meters multiply by 0.3048				

FOR SALE BY U.S. GEOLOGICAL SURVEY
DENVER, COLORADO 80225, OR RESTON, VIRGINIA 22092

FEB 28 1990

REC'D FILE COPY

Topographic Map Symbols

Primary highway, hard surface	
Secondary highway, hard surface	
Light duty road, principal street, hard or improved surface	
Other road or street, trail	
Route marker: Interstate, U.S.; State	
Railroad: standard gage, narrow gage	
Bridge: overpass, underpass	
Tunnel: road, railroad	
Built up area, locality, elevation	
Airport, landing field, landing strip	
National boundary	
State boundary	
County boundary	
National or State reservation boundary	
Land grant boundary	
U.S. public lands survey: range, township; section	
Range, township; section line: protracted	
Power transmission line; pipeline	
Dam; dam with lock	
Cemetery, building	
Wellhead, water well; spring	
Mine shaft; adit or cave; mine, quarry; gravel pit	
Campground; picnic area; U.S. location monument	
Ruins; cliff dwelling	
Distorted surface: strip mine, lake, sand	
Contours: index; intermediate; supplementary	
Bathymetric contours: index; intermediate	
Stream, lake, pond; intermittent	
Rapids, large and small; falls, large and small	
Area to be submerged; marsh, swamp	
Land subject to controlled inundation; woodland	
Scrub; mangrove	
Orchard; vineyard	

A pamphlet describing topographic maps is available on request.

BLACK RIVER FALLS, WISCONSIN
44090-A1-TM-100

1985

PHOTOINSPECTED 1988

SCALE 1:100 000

1 CENTIMETER ON THE MAP REPRESENTS 1 KILOMETER ON THE GROUND

CONTOUR INTERVAL 10 METERS

SUPPLEMENTARY CONTOUR INTERVAL 5 METERS