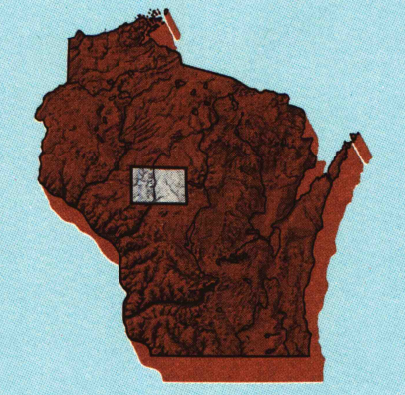


MARSHFIELD, WISCONSIN

30 X 60 MINUTE SERIES (PLANIMETRIC)

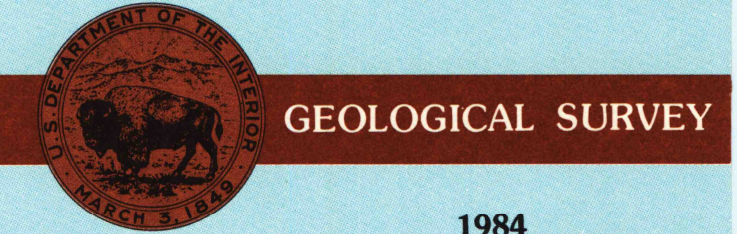
Marshfield WISCONSIN

1:100 000-scale planimetric map



30 X 60 MINUTE QUADRANGLE SHOWING

- Elevations in meters
- Highways, roads and other manmade structures
- Water features
- Woodland areas
- Geographic names



Produced by the United States Geological Survey
 Compiled from USGS 1:24 000-scale topographic maps dated 1979-1982. Planimetry revised from aerial photographs taken 1980 and other source data. Revised information not field checked. Map edited 1984.
 Projection and 10 000-meter grid, zone 15, Universal Transverse Mercator
 25 000-foot grid ticks based on Wisconsin coordinate system, central zone
 1927 North American Datum
 To place on the predicted North American Datum 1983, move the projection lines 6 meters north and 11 meters east
 There may be private inholdings within the boundaries of the National or State reservations shown on this map

NATIONAL GEODETIC VERTICAL DATUM OF 1929 ELEVATIONS SHOWN TO THE NEAREST METER

THIS MAP COMPLIES WITH NATIONAL MAP ACCURACY STANDARDS

CONVERSION TABLE		DECLINATION DIAGRAM		ADJOINING MAPS	
Meters	Feet	Magnetic Declination		1	2
2	6.561	11° 48' 31" W		3	4
4	13.122	27 MILS		5	6
6	19.683	31 MILS		7	8
8	26.244			1	Bloomer
10	32.805			2	Madison
				3	Merill
				4	Eau Claire
				5	Wauna
				6	Wisconsin
				7	Black River Falls
				8	Wisconsin Rapids

FOR SALE BY U.S. GEOLOGICAL SURVEY RESTON, VIRGINIA 22092

Topographic Map Symbols

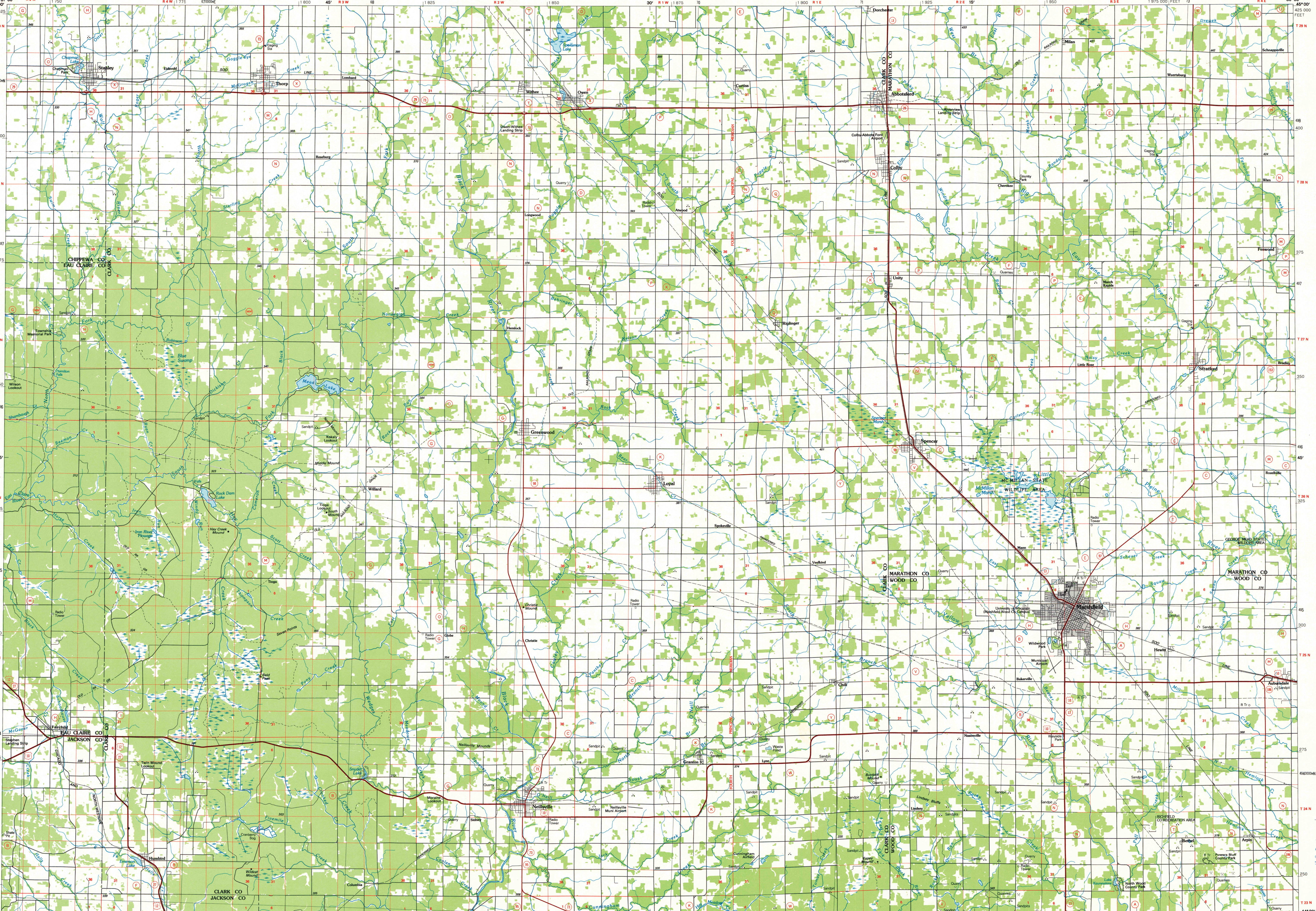
Primary highway, hard surface	
Secondary highway, hard surface	
Light duty road, principal street, hard or improved surface	
Other road or street; trail	
Route marker: Interstate, U.S. State	
Railroad: standard gauge; narrow gauge	
Bridge: overpass; underpass	
Tunnel: road; railroad	
Built up area; locality; elevation	
Airport; landing field; landing strip	
National boundary	
State boundary	
County boundary	
National or State reservation boundary	
Land grant boundary	
U.S. public lands survey: range, township, section	
Range, township; section line: protected	
Power transmission line; pipeline	
Dam; dam with lock	
Cemetery; building	
Windmill; water well; spring	
Mine shaft; add or cave; mine, quarry; gravel pit	
Campground; picnic area; U.S. location monument	
Ruins; cliff dwelling	
Distorted surface; strip mine, lava; sand	
Contours: index, intermediate, supplementary	
Bathymetric contours: index, intermediate	
Stream, lake: perennial; intermittent	
Rapids, large and small; falls, large and small	
Area to be submerged; marsh, swamp	
Land subject to controlled inundation; woodland	
Sand; mangrove	
Orchard; vineyard	

A pamphlet describing topographic maps is available on request

U.S. Regional Depository Copy DO NOT DISCARD

ARTHUR H. LIBRARY University of Wisconsin-Madison

JUN - 6 1985 8006-718 SET



SCALE 1:100 000
 1 CENTIMETER ON THE MAP REPRESENTS 1 KILOMETER ON THE GROUND
 1:100 000
 1000 0 5000 10000 15000 20000 METERS
 0 1 2 3 4 5 6 7 8 9 10 11 12 13 14 15 16 17 18 19 20 KILOMETERS
 0 1 2 3 4 5 6 7 8 9 10 11 12 13 14 15 16 17 18 19 20 MILES

MARSHFIELD, WISCONSIN 44090-E1-PL-100 1984 NON-CIRCULATING