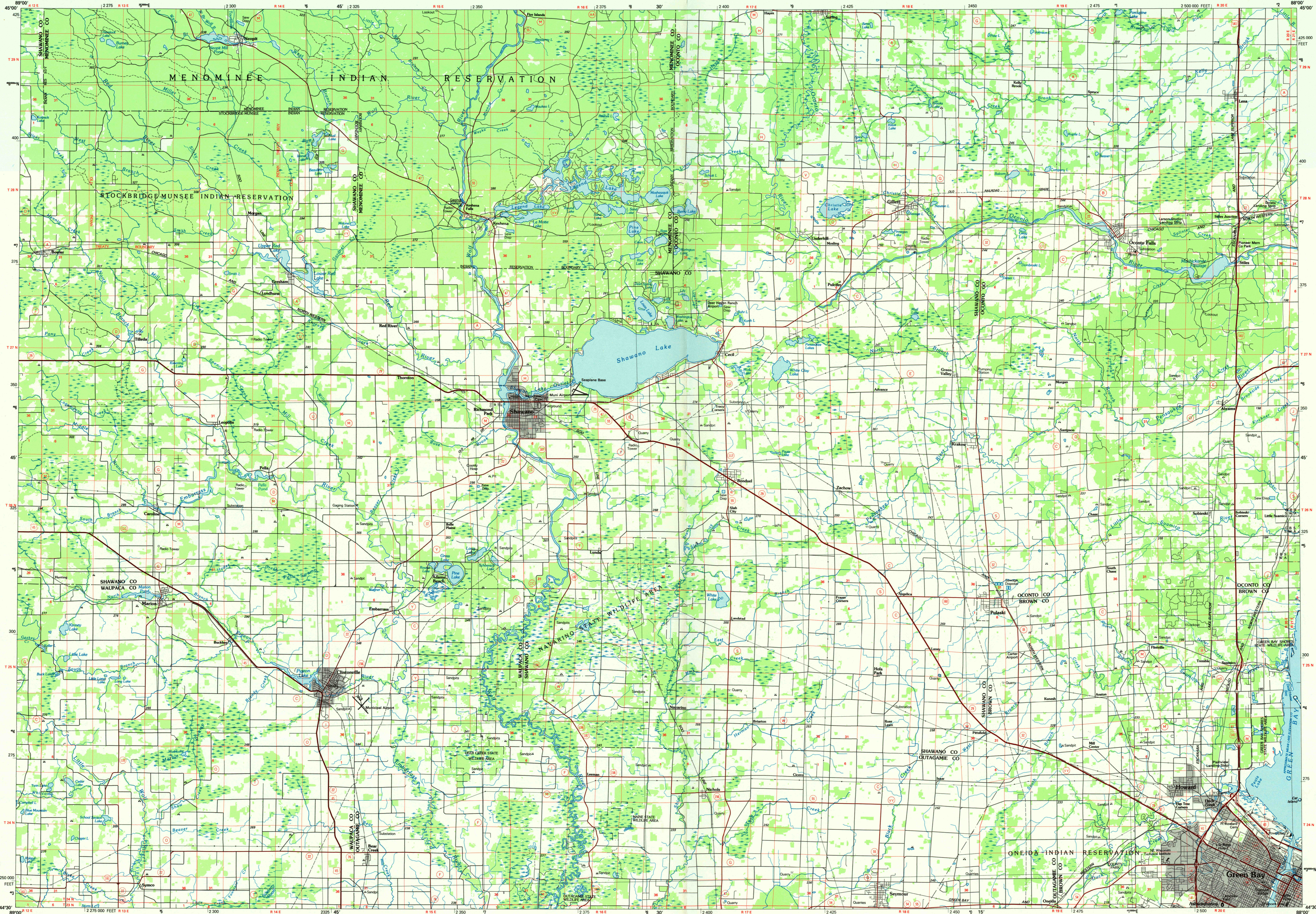


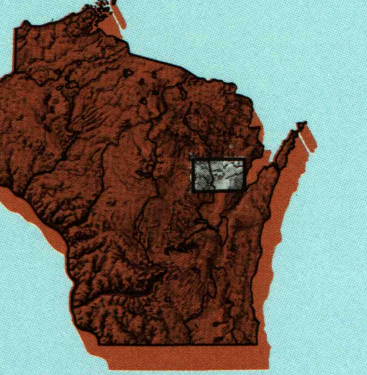
SHAWANO, WISCONSIN

30 X 60 MINUTE SERIES (PLANIMETRIC)



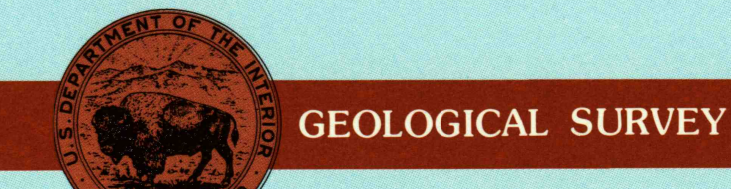
Shawano WISCONSIN

1:100 000-scale planimetric map



30 X 60 MINUTE QUADRANGLE SHOWING

- Elevations in meters
- Highways, roads and other manmade structures
- Water features
- Woodland areas
- Geographic names



1984

Produced by the United States Geological Survey
 Compiled from USGS 1:24 000-scale topographic maps dated 1969-1982. Planimetry revised from aerial photographs taken 1982-83 and other source data. Revised information not field checked. Map edited 1984.
 Projection and 10 000-meter grid, zone 16, Universal Transverse Mercator.
 25 000-foot grid ticks based on Wisconsin coordinate system, central zone 1927 North American Datum.
 To place on the predicted North American Datum 1983, move the projection lines 5 meters north and 8 meters east.
 There may be private inholdings within the boundaries of the National or State reservations on this map.

NATIONAL GEODETIC VERTICAL DATUM OF 1929
 ELEVATIONS SHOWN TO THE NEAREST METER

THIS MAP COMPLIES WITH NATIONAL MAP ACCURACY STANDARDS

CONVERSION TABLE		DECLINATION DIAGRAM		ADJOINING MAPS		
Meters	Feet	Diagram showing magnetic declination from true north.		1	2	3
1	3.2808			4	5	
2	6.5617			6	7	8
3	9.8425			1. Merrill		
4	13.1234			2. Waubesa		
5	16.4042			3. Manitowish		
6	19.6850			4. Wisconsin Bay		
7	22.9659			5. Wisconsin Rapids		
8	26.2467			6. Appleton		
9	29.5275			7. Manitowoc		
10	32.8084					

FOR SALE BY U. S. GEOLOGICAL SURVEY, DENVER, COLORADO 80225
 OR RESTON, VIRGINIA 22092

Topographic Map Symbols

- Primary highway, hard surface
- Secondary highway, hard surface
- Light duty road, principal street, hard or improved surface
- Other road or street: trail
- Route marker: Interstate, U.S. State
- Railroad: standard gage, narrow gage
- Bridge: overpass, underpass
- Tunnel: road, railroad
- Built up area: locally, elevation
- Airport: landing field; landing strip
- National boundary
- State boundary
- County boundary
- National or State reservation boundary
- Land grant boundary
- U.S. public lands survey: range, township, section
- Range, township, section line: protracted
- Power transmission line: pipeline
- Dam: dam with lock
- Caney; building
- Woodwell: water well; spring
- Mine shaft; adit or cave; mine, quarry; gravel pit
- Campground; picnic area; U.S. location monument
- Ruins; cliff dwelling
- Distorted surface: strip mine, lava, sand
- Contours: index, intermediate, supplementary
- Bathymetric contours: index, intermediate
- Stream, lake, perennial; intermittent
- Rapids, large and small; falls, large and small
- Area to be submerged; marsh, swamp
- Land subject to controlled inundation; woodland
- Scrub; mangrove
- Orchard; vineyard

A pamphlet describing topographic maps is available on request