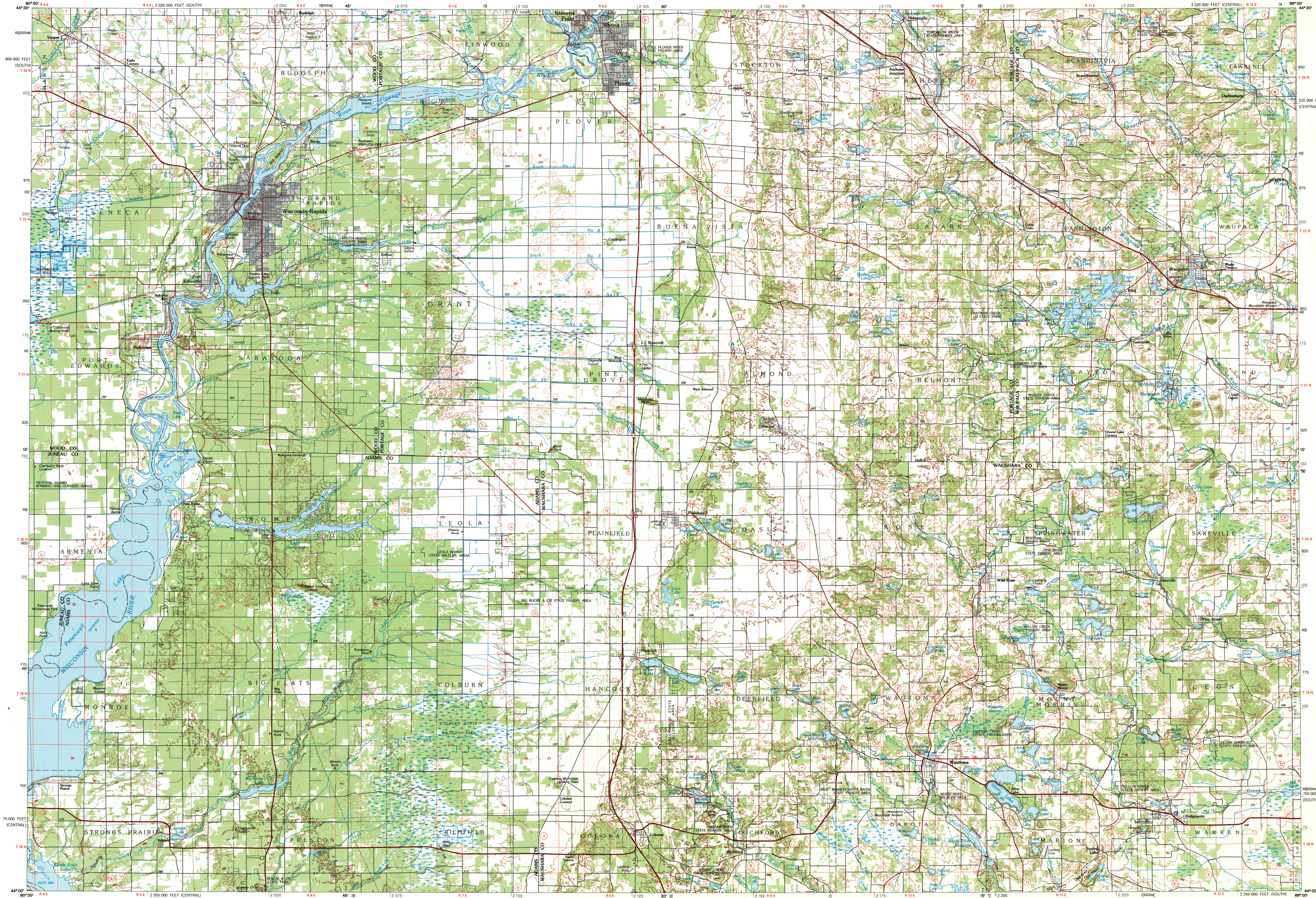


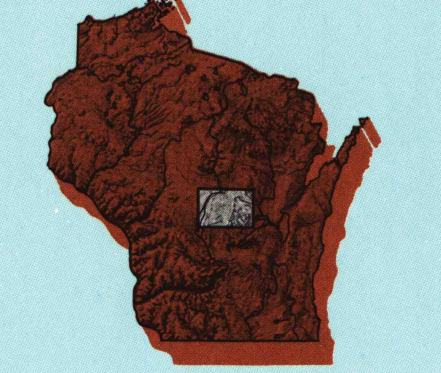
WISCONSIN RAPIDS, WISCONSIN

30 X 60 MINUTE SERIES (TOPOGRAPHIC)



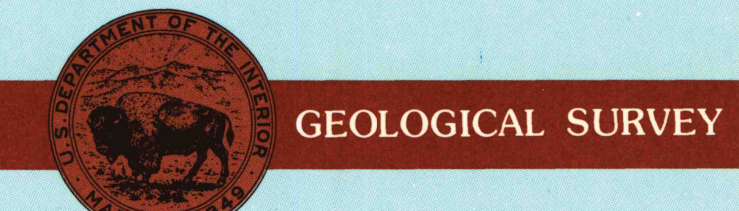
Wisconsin Rapids WISCONSIN

1:100 000-scale metric topographic map



30 X 60 MINUTE QUADRANGLE SHOWING

- Contours and elevations in meters
- Highways, roads and other manmade structures
- Water features
- Woodland areas
- Geographic names



1985 PHOTOINSPECTED 1986

Produced by the United States Geological Survey
 Compiled from USGS 1:24 000-scale topographic maps dated 1961-1984. Planimetry revised from aerial photographs taken 1962 and other source data. Revised information not field checked. Map edited 1985.

Projection and 10 000-meter grid, zone 16, Universal Transverse Mercator
 25 000-foot grid ticks based on Wisconsin coordinate system, central and south zones 1927 North American Datum
 To place on the predicted North American Datum 1983, move the projection lines 5 meters north and 10 meters east
 There may be private inholdings within the boundaries of the National or State reservations shown on this map
 Map photospected using 1986 photographs
 No major culture or drainage changes found
 CONTOUR INTERVAL 10 METERS
 SUPPLEMENTARY CONTOUR INTERVAL 5 METERS
 NATIONAL GEODETIC VERTICAL DATUM OF 1929
 ELEVATIONS SHOWN TO THE NEAREST METER

THIS MAP COMPLIES WITH NATIONAL MAP ACCURACY STANDARDS

CONVERSION TABLE		DECLINATION DIAGRAM		ADJOINING MAPS		
Meters	Feet	MAGNETIC		1	2	3
1	3.2808	31° 15' 00"		4	5	6
2	6.5617	31° 15' 00"		7	8	
3	9.8425	31° 15' 00"				
4	13.1234	31° 15' 00"				
5	16.4042	31° 15' 00"				
6	19.6851	31° 15' 00"				
7	22.9659	31° 15' 00"				
8	26.2468	31° 15' 00"				
9	29.5276	31° 15' 00"				
10	32.8085	31° 15' 00"				

UTM grid convergence (GN) and 1983 magnetic declination (MD) at center of map
 Diagram is approximate

1	Marshfield
2	Shawano
3	Black River Falls
4	Appleton
5	Spokane
6	Wisconsin Dells
7	Wausau
8	Fond du Lac

FOR SALE BY U.S. GEOLOGICAL SURVEY DENVER, COLORADO 80225, OR RESTON, VIRGINIA 22092

U.S. Regional Depository Copy DO NOT DISCARD

Topographic Map Symbols

Primary highway, hard surface	
Secondary highway, hard surface	
Light duty road, principal street, hard or improved surface	
Other road or street; trail	
Route marker: Interstate, U.S. State	
Railroad: standard gauge; narrow gauge	
Bridge; overpass; underpass	
Tunnel; road; railroad	
Built up area; locality; elevation	
Airport; landing field; landing strip	
National boundary	
State boundary	
County boundary	
National or State reservation boundary	
Land grant boundary	
U.S. public lands survey; range, township; section	
Range, township; section line; protected	
Power transmission line; pipeline	
Dam; dam with lock	
Cemetery; building	
Wellhead; water well; spring	
Mine shaft; adit or cave; mine; quarry; gravel pit	
Campground; picnic area; U.S. location monument	
Ruins; cliff dwelling	
Distorted surface; strip mine; lava; sand	
Contours: index; intermediate; supplementary	
Bathymetric contours: index; intermediate	
Stream, lake; perennial; intermittent	
Rapids, large and small; falls, large and small	
Area to be submerged; marsh; swamp	
Land subject to controlled inundation; woodland	
Sand; mangrove	
Orchard; vineyard	

A pamphlet describing topographic maps is available on request

SET 5006-9/8 copy 5