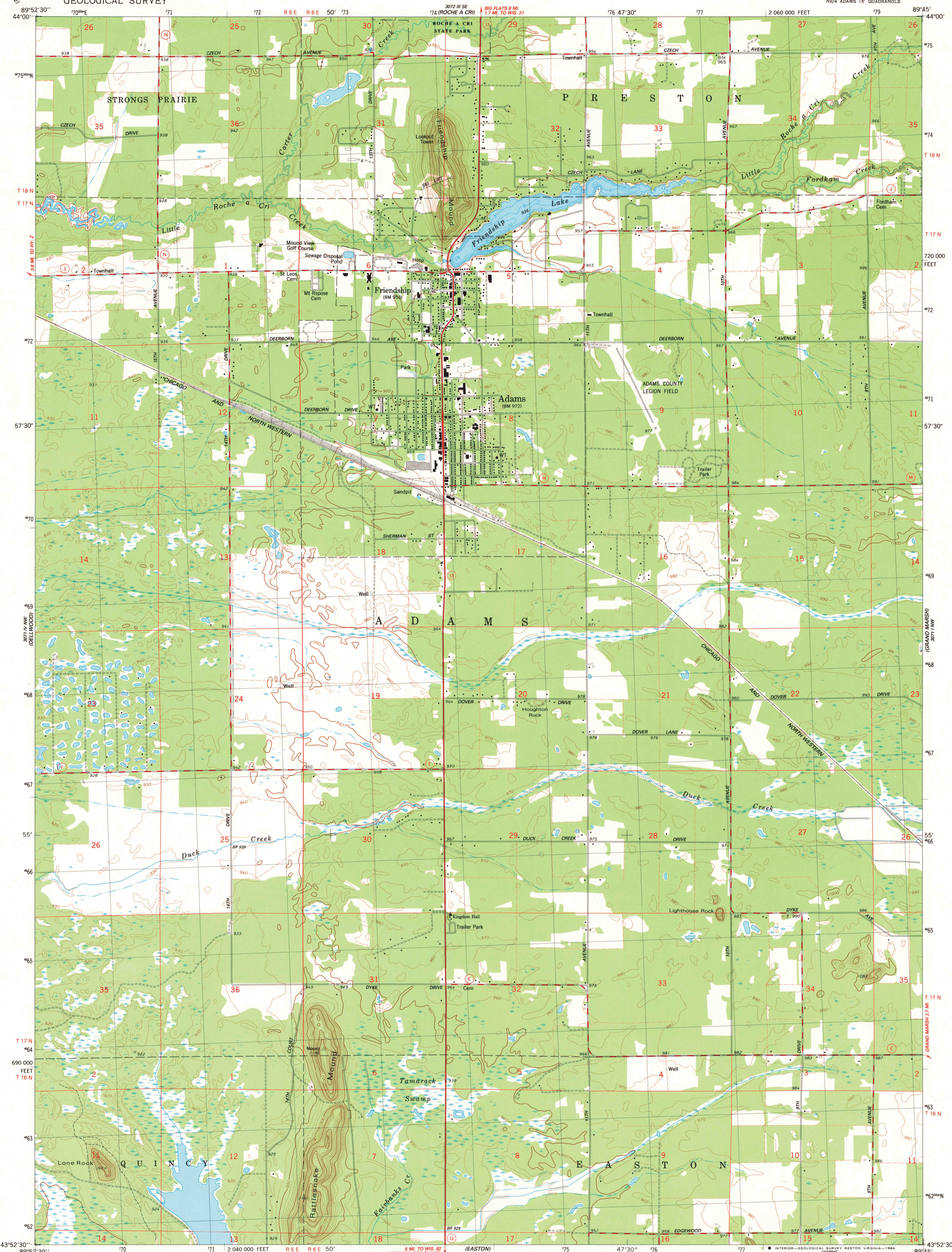
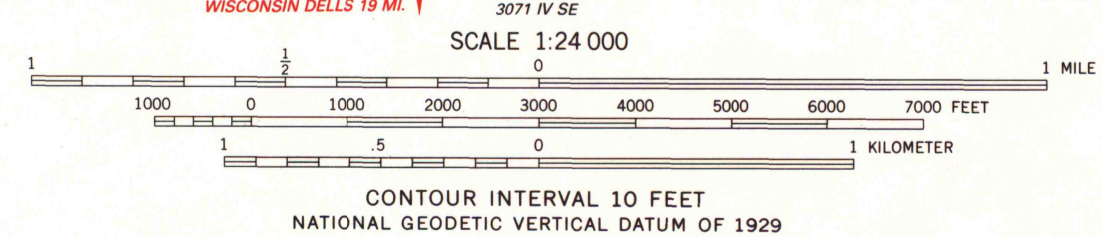
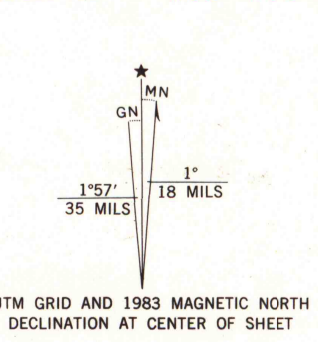


3072 1/2 SW
(DUNDAS)

3071 1/2 SW
(COLOMA SW)



Mapped, edited, and published by the Geological Survey in cooperation with the Wisconsin Division of Highways and Wisconsin Geological and Natural History Survey. Control by USGS and NGS/NOAA. Topography by photogrammetric methods from aerial photographs taken 1959-60. Revised from aerial photographs taken 1981. Field checked 1983. Map edited 1983. Hydrography compiled from information furnished by Wisconsin Department of Natural Resources. Projection and 10,000-foot grid ticks: Wisconsin coordinate system, south zone (Lambert conformal conic). 1000-meter Universal Transverse Mercator grid, zone 16 1927 North American Datum. To place on the predicted North American Datum 1983, move the projection lines 5 meters north and 11 meters east as shown by dashed corner ticks. There may be private inholdings within the boundaries of the National or State reservations shown on this map. Fine red dashed lines indicate selected fence and field lines where generally visible on aerial photographs. This information is uncheckd.



ROAD CLASSIFICATION
Primary highway, hard surface ——— Light-duty road, hard or improved surface ———
Secondary highway, hard surface ——— Unimproved road ———
Interstate Route — U.S. Route — State Route

THIS MAP COMPLIES WITH NATIONAL MAP ACCURACY STANDARDS
FOR SALE BY U.S. GEOLOGICAL SURVEY, RESTON, VIRGINIA 22092
AND WISCONSIN GEOLOGICAL AND NATURAL HISTORY SURVEY, MADISON, WISCONSIN 53706
A FOLDER DESCRIBING TOPOGRAPHIC MAPS AND SYMBOLS IS AVAILABLE ON REQUEST

ADAMS, WIS.
NE 4 ADAMS 15' QUADRANGLE
N4352.5-W8945/7.5
1983
DMA 3071 IV NE-SERIES V861

1983
COPY

A.H. ROBINSON
MAP LIBRARY
AUG 28 1984
University of Wisconsin
Madison