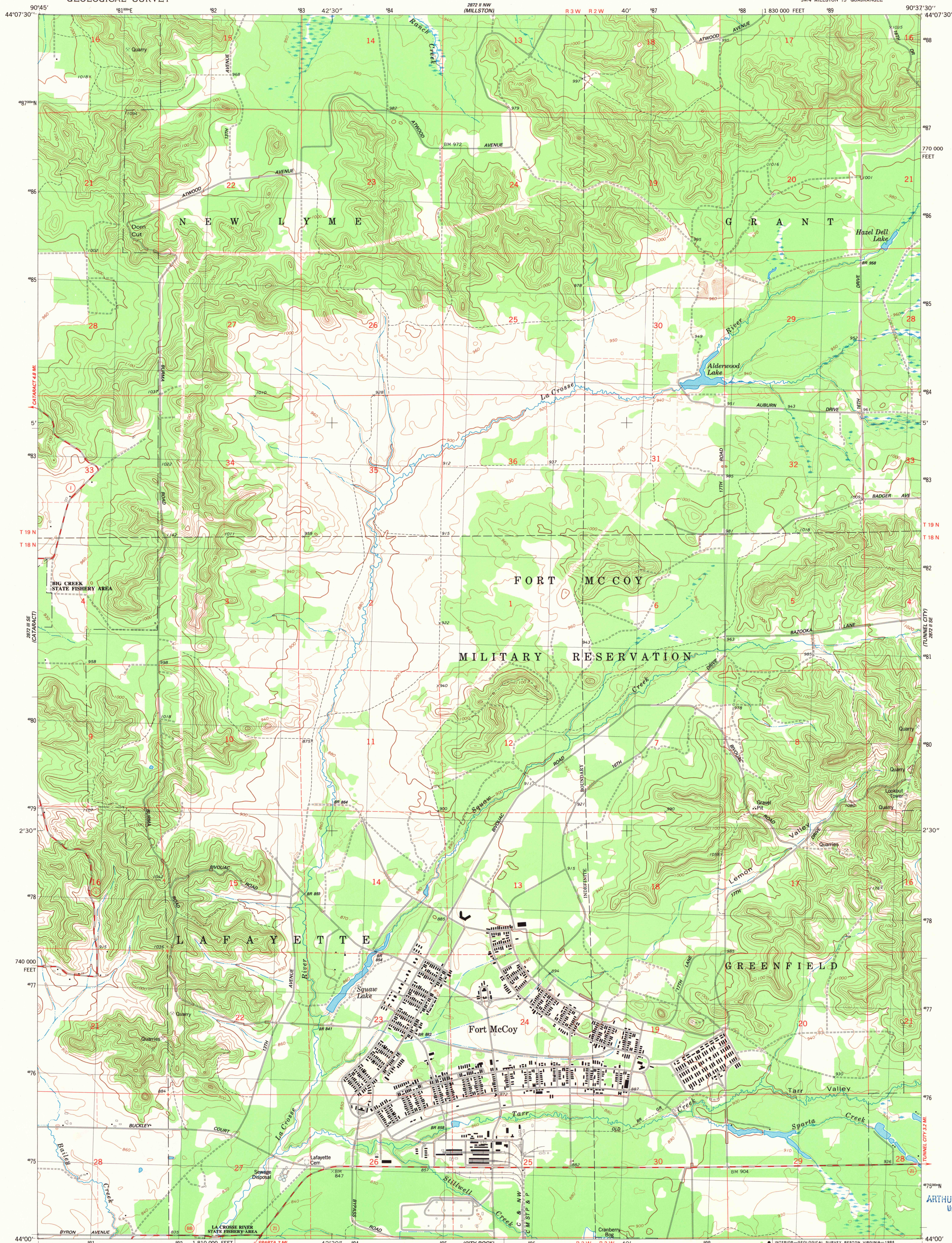


2872 II NE
(SPARTAN)

UNITED STATES
DEPARTMENT OF THE INTERIOR
GEOLOGICAL SURVEY

ALDERWOOD LAKE QUADRANGLE
WISCONSIN-MONROE CO.
7.5 MINUTE SERIES (TOPOGRAPHIC)
SW 1/4 MILLSTON 15' QUADRANGLE

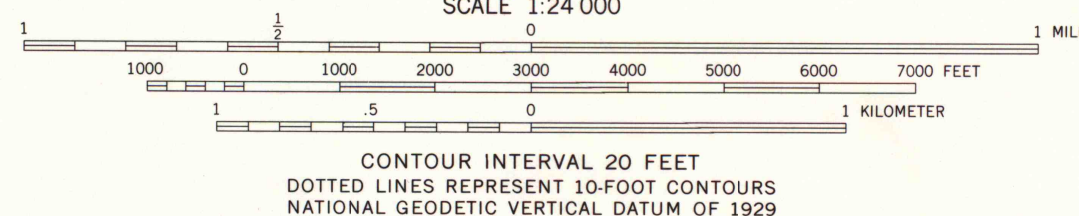
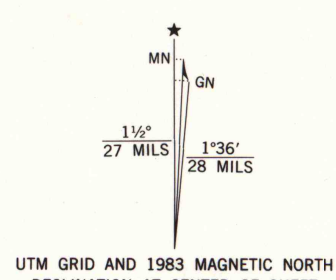
2872 II NE
(WARRERS WEST)



Mapped, edited, and published by the Geological Survey

Control by USGS and NOS/NOAA
Topography by photogrammetric methods from aerial photographs
taken 1978. Field checked 1980. Map edited 1983
Projection and 10,000-foot grid ticks: Wisconsin coordinate
system, south zone (Lambert conformal conic)
1000-meter Universal Transverse Mercator grid, zone 15
1927 North American Datum
To place on the predicted North American Datum 1983
move the projection lines 6 meters north and
11 meters east as shown by dashed corner ticks

There may be private inholdings within the boundaries of
the National or State reservations shown on this map
Fine red dashed lines indicate selected fence and field lines where
generally visible on aerial photographs. This information is unchecked



THIS MAP COMPLIES WITH NATIONAL MAP ACCURACY STANDARDS
FOR SALE BY U.S. GEOLOGICAL SURVEY, RESTON, VIRGINIA 22092
AND WISCONSIN GEOLOGICAL AND NATURAL HISTORY SURVEY, MADISON, WISCONSIN 53706
A FOLDER DESCRIBING TOPOGRAPHIC MAPS AND SYMBOLS IS AVAILABLE ON REQUEST



ROAD CLASSIFICATION	
Primary highway, hard surface	Light-duty road, hard or improved surface
Secondary highway, hard surface	Unimproved road
Interstate Route	U. S. Route
	State Route

ALDERWOOD LAKE, WIS.
SW 1/4 MILLSTON 15' QUADRANGLE
N4400-W9037.5/7.5

1983

DMA 2872 II SW-SERIES V861

ALDERWOOD LAKE QUADRANGLE
UNIVERSITY OF WISCONSIN-MADISON

JUN 15 1984

1983
Copy
1-1
X