

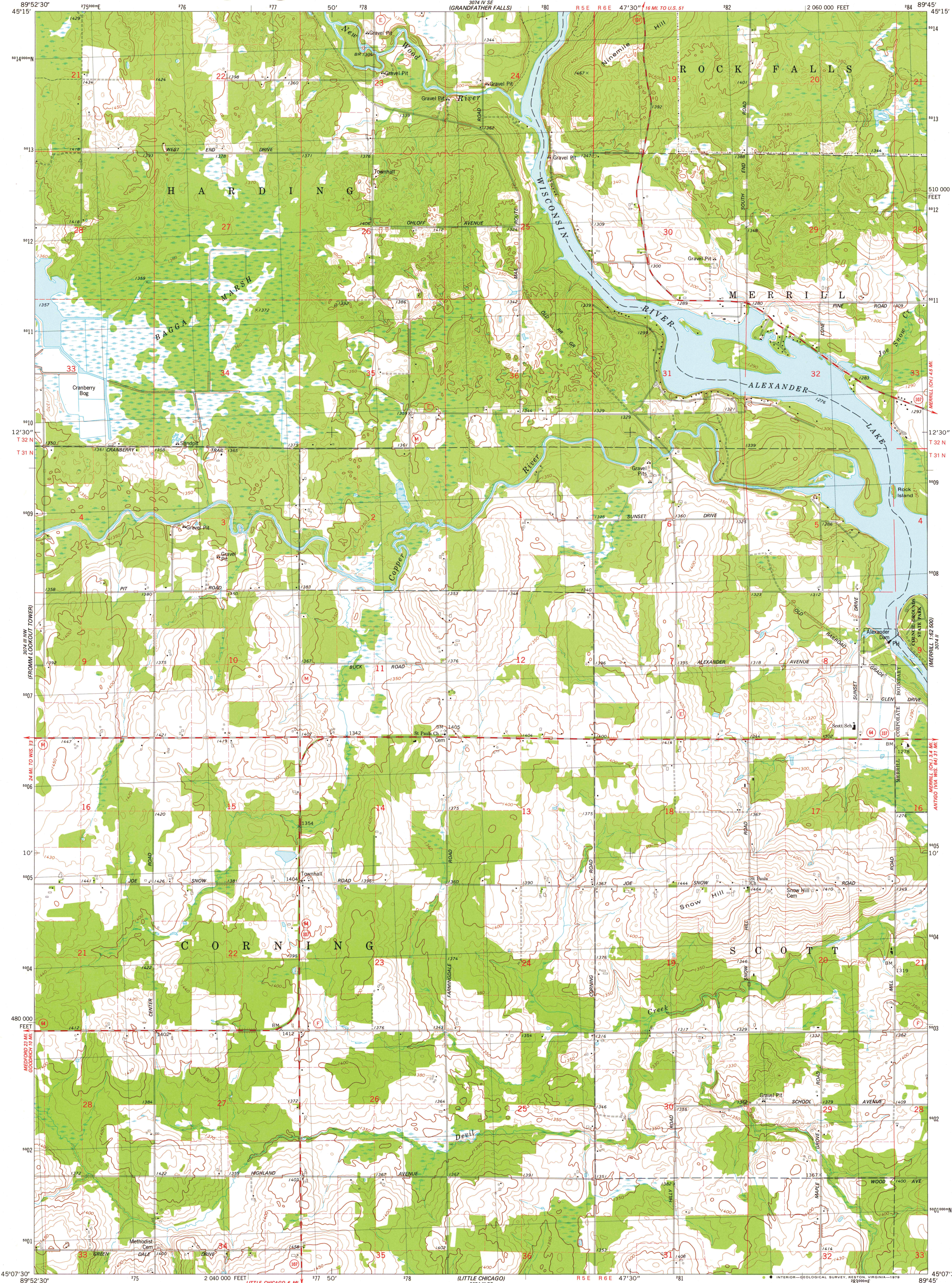
3074 III SW
(WATKINS CAMP)

UNITED STATES
DEPARTMENT OF THE INTERIOR
GEOLOGICAL SURVEY

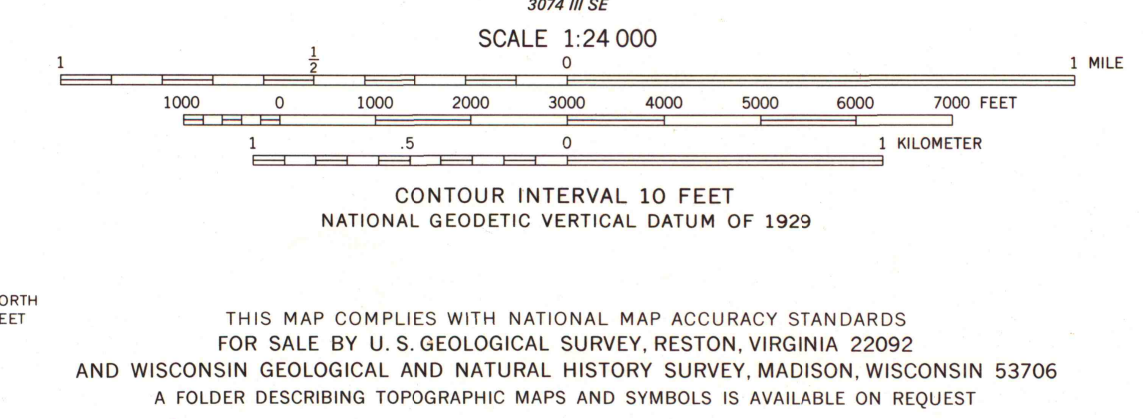
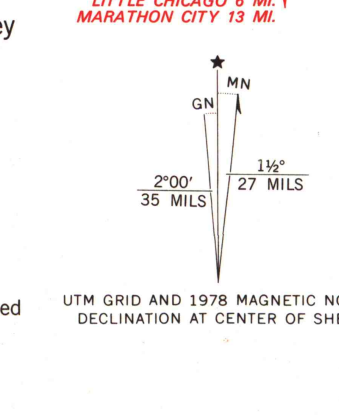


ALEXANDER LAKE QUADRANGLE
WISCONSIN—LINCOLN CO.
7.5 MINUTE SERIES (TOPOGRAPHIC)

3074 IIA NW
(TOWNSHIP)
1:25,000



Mapped, edited, and published by the Geological Survey
Control by USGS and NOS/NOAA
Topography by photogrammetric methods from aerial photographs taken 1974. Field checked 1975. Map edited 1978
Projection and 10,000-foot grid ticks. Wisconsin coordinate system, central zone (Lambert conformal conic)
1000-meter Universal Transverse Mercator grid, zone 16
1927 North American datum
Fine red dashed lines indicate selected fence and field lines where generally visible on aerial photographs. This information is un-checked
There may be private inholdings within the boundaries of the National or State reservations shown on this map



ROAD CLASSIFICATION

Primary highway, hard surface	Light-duty road, hard or improved surface
Secondary highway, hard surface	Unimproved road
Interstate Route	U. S. Route
	State Route

WISCONSIN
QUADRANGLE LOCATION

ALEXANDER LAKE, WIS.
NE/4 HAMBURG 15' QUADRANGLE
N4507.5—W8945/7.5
1978
AMS 3074 III NE—SERIES V861

MAP AND AIR PHOTO LIBRARY
SEP 6 1979
University of Wisconsin
Madison

1978
Copy
1-1