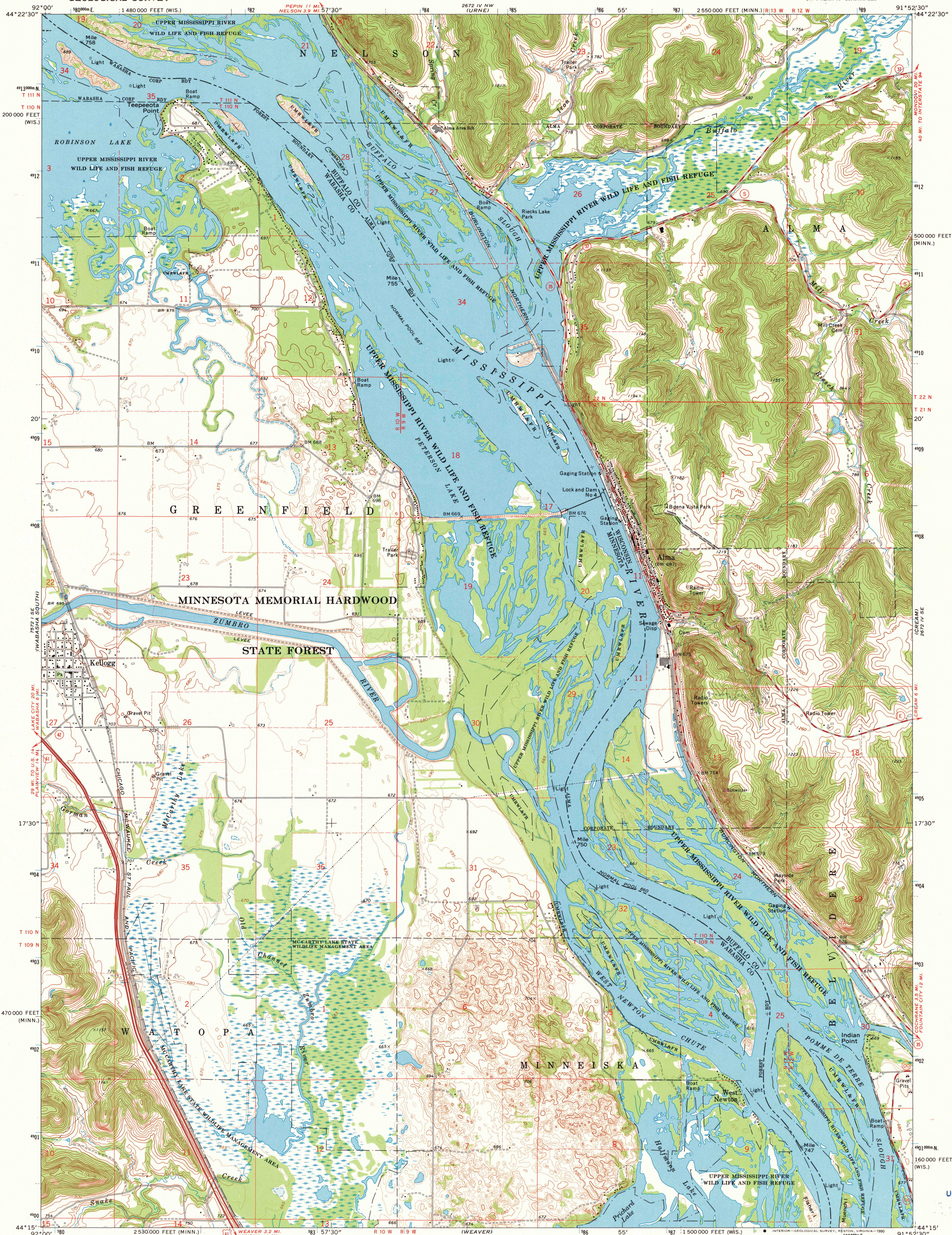


UNITED STATES  
DEPARTMENT OF THE INTERIOR  
GEOLOGICAL SURVEY

STATE OF MINNESOTA  
DEPARTMENT OF ADMINISTRATION

ALMA QUADRANGLE  
WISCONSIN-MINNESOTA  
7.5 MINUTE SERIES (TOPOGRAPHIC)  
SW 1/4 ALMA 15' QUADRANGLE



Maped, edited, and published by the Geological Survey

Control by USGS and NOS/NOAA

Topography by photogrammetric methods from aerial photographs taken 1973-74. Field checked 1974

Hydrography compiled from information furnished by Minnesota Department of Natural Resources

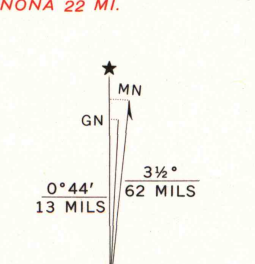
Projection: Minnesota coordinate system, south zone (Lambert conformal conic)

10,000-foot grid ticks based on Minnesota coordinate system, south zone, and Wisconsin coordinate system, central zone

1000-metre Universal Transverse Mercator grid ticks, zone 15, shown in blue. 1927 North American datum

Fine red dashed lines indicate selected fence and field lines where generally visible on aerial photographs

This information is uncheck



CONTOUR INTERVAL 20 FEET  
DOTTED LINES REPRESENT 5-FOOT CONTOURS  
NATIONAL GEODETIC VERTICAL DATUM OF 1929

THIS MAP COMPLIES WITH NATIONAL MAP ACCURACY STANDARDS  
FOR SALE BY U.S. GEOLOGICAL SURVEY, DENVER, COLORADO 80225, OR RESTON, VIRGINIA 22092  
AND WISCONSIN GEOLOGICAL AND NATURAL HISTORY SURVEY, MADISON, WISCONSIN 53706  
A FOLDER DESCRIBING TOPOGRAPHIC MAPS AND SYMBOLS IS AVAILABLE ON REQUEST

ROAD CLASSIFICATION  
Primary highway, hard surface  
Secondary highway, hard surface  
Unimproved road  
Light-duty road, hard or improved surface  
Unimproved road  
Interstate Route  
U.S. Route  
State Route

ALMA, WIS.-MINN.  
SW 1/4 ALMA 15' QUADRANGLE  
44091-C8-TF-024  
1974  
DMA 7672 IV SW-SERIES V872

U.S. Regional  
Depository Copy  
DO NOT DISCARD

A.H. ROBINSON  
MAP LIBRARY  
FEB 22 1991  
University of Wisconsin  
Madison

1974  
copy  
1-2