

2678 8  
CUMBERLAND  
1:24,000

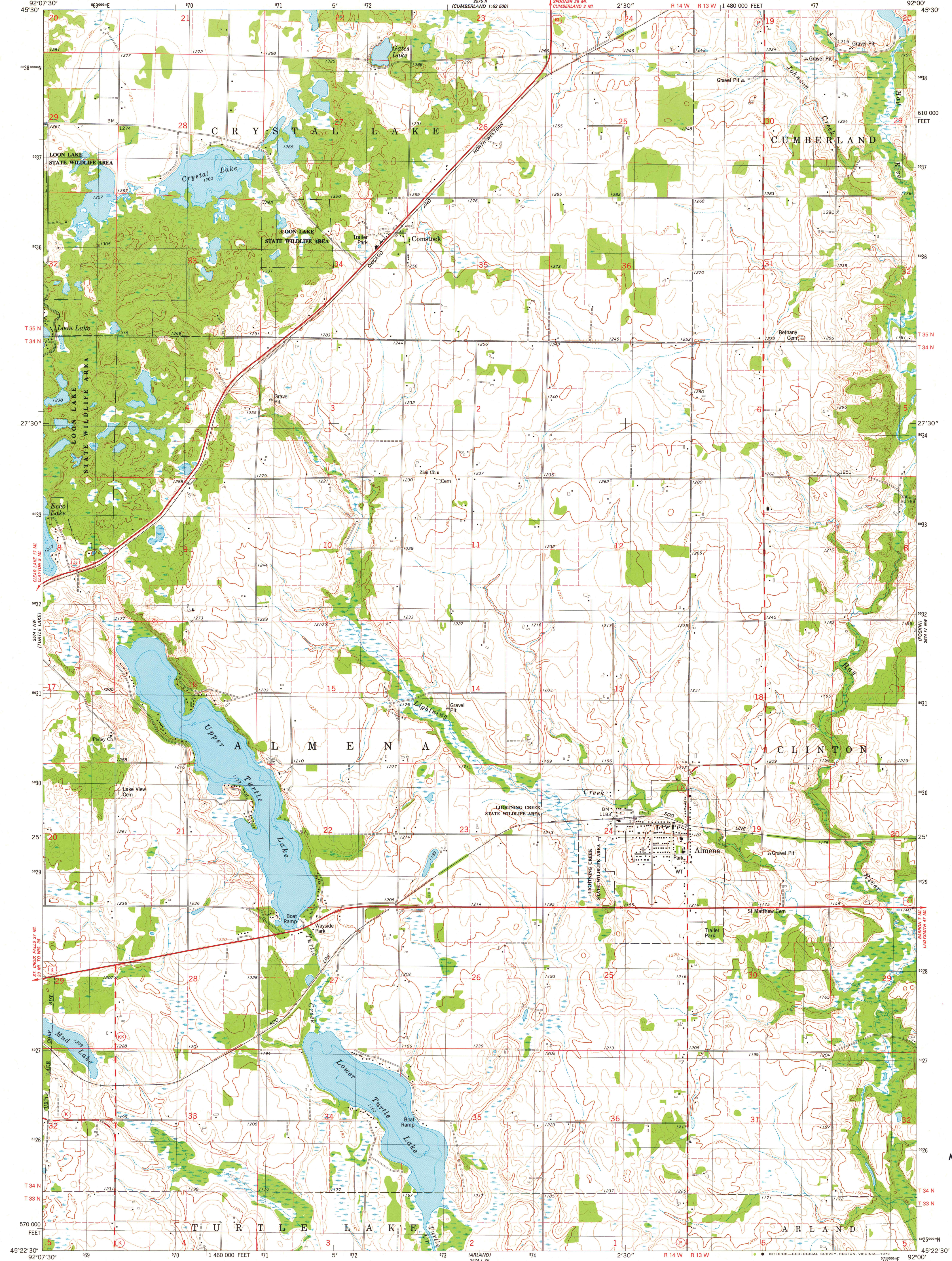
UNITED STATES  
DEPARTMENT OF THE INTERIOR  
GEOLOGICAL SURVEY



STATE OF WISCONSIN  
DIVISION OF HIGHWAYS  
GEOLOGICAL AND NATURAL HISTORY SURVEY

ALMENA QUADRANGLE  
WISCONSIN-BARRON CO.  
7.5 MINUTE SERIES (TOPOGRAPHIC)  
NE 1/4 TURTLE LAKE 15' QUADRANGLE

2678 8  
TURTLE LAKE  
1:24,000



604700  
2674 158

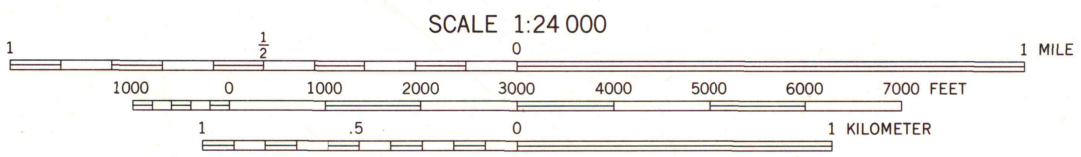
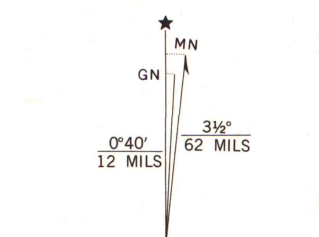
Mapped, edited, and published by the Geological Survey in cooperation with the Wisconsin Division of Highways and Wisconsin Geological and Natural History Survey. Control by USGS and NOS/NOAA.

Topography by photogrammetric methods from aerial photographs taken 1975. Field checked 1976. Map edited 1978.

Hydrography compiled from information furnished by Wisconsin Department of Natural Resources.

Projection and 10,000-foot grid ticks: Wisconsin coordinate system, central zone (Lambert conformal conic). 1000-meter Universal Transverse Mercator grid, zone 15 1927 North American datum.

There may be private inholdings within the boundaries of the National or State reservations shown on this map.



CONTOUR INTERVAL 10 FEET  
DOTTED LINES REPRESENT 5-FOOT CONTOURS  
NATIONAL GEODETIC VERTICAL DATUM OF 1929

THIS MAP COMPLIES WITH NATIONAL MAP ACCURACY STANDARDS FOR SALE BY U. S. GEOLOGICAL SURVEY, RESTON, VIRGINIA 22092 AND WISCONSIN GEOLOGICAL AND NATURAL HISTORY SURVEY, MADISON, WISCONSIN 53706. A FOLDER DESCRIBING TOPOGRAPHIC MAPS AND SYMBOLS IS AVAILABLE ON REQUEST.



ROAD CLASSIFICATION

Primary highway, hard surface	Light-duty road, hard or improved surface
Secondary highway, hard surface	Unimproved road
Interstate Route	U. S. Route
	State Route

MAP AND AIR PHOTO LIBRARY

SEP 6 1979

University of Wisconsin  
Madison

ALMENA, WIS.  
NE 1/4 TURTLE LAKE 15' QUADRANGLE  
N4522.5-W9200/7.5

1978

AMS 2574 1 NE-SERIES V861

1978  
Copy  
1-1