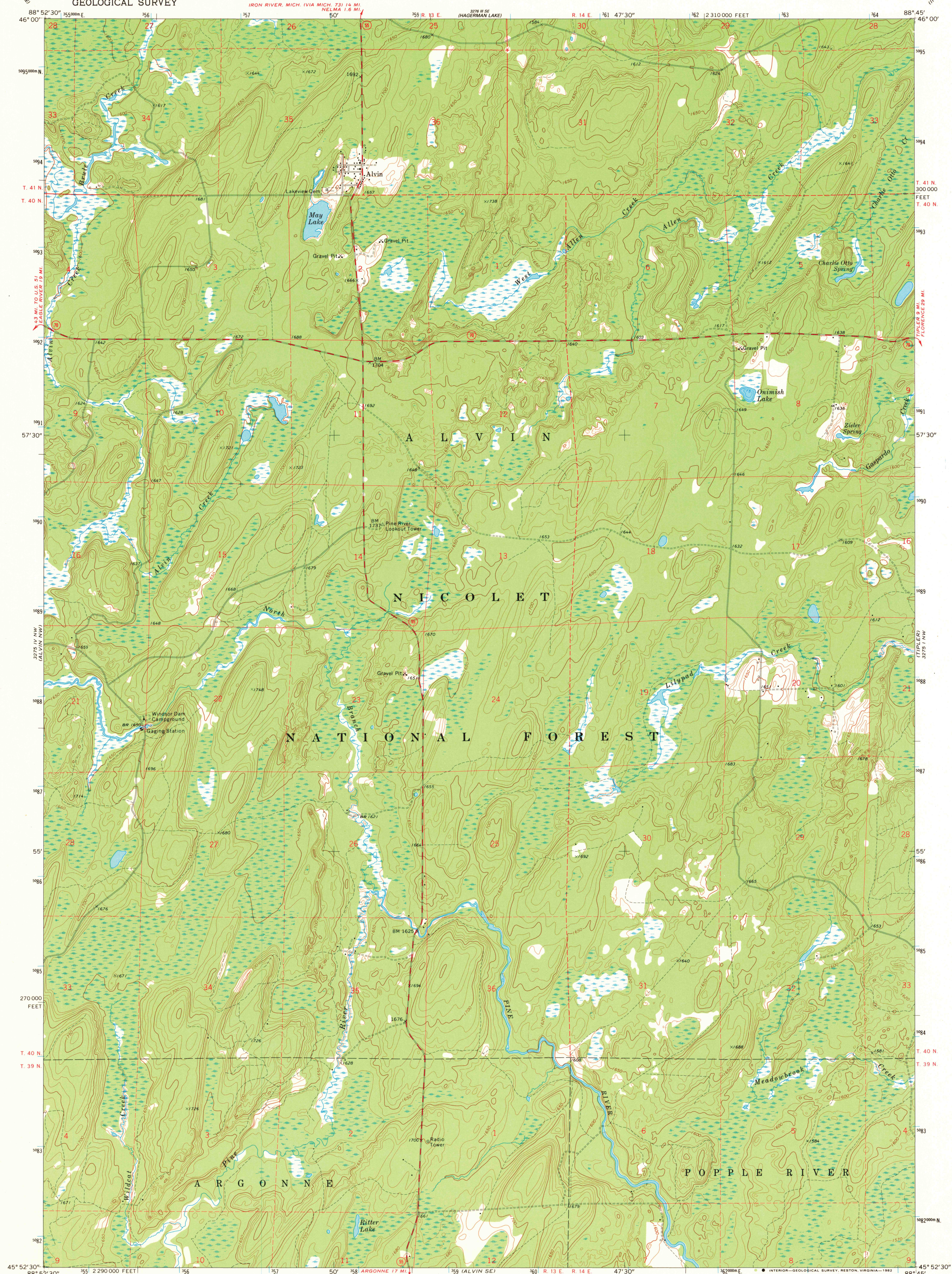
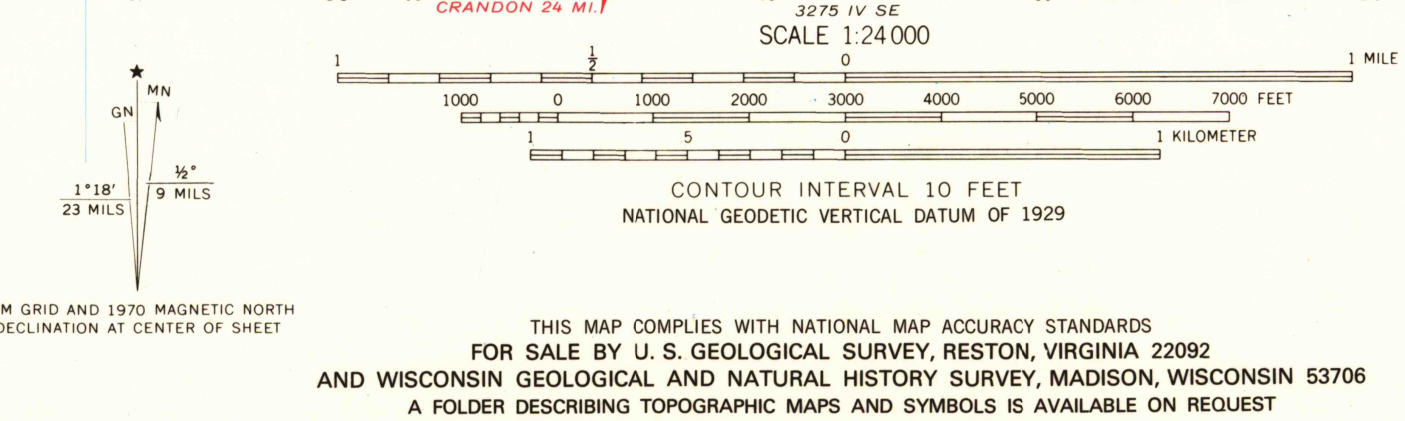


UNITED STATES
DEPARTMENT OF THE INTERIOR
GEOLOGICAL SURVEY

ALVIN QUADRANGLE
WISCONSIN—FOREST CO.
7.5 MINUTE SERIES (TOPOGRAPHIC)



Mapped, edited, and published by the Geological Survey
Control by USGS and USC&GS
Topography by photogrammetric methods from aerial
photographs taken 1966. Field checked 1970
Depth curves compiled from chart furnished by
Wisconsin Department of Natural Resources
Polyconic projection. 1927 North American datum
10,000-foot grid based on Wisconsin coordinate system, north zone
1000-meter Universal Transverse Mercator grid ticks,
zone 16, shown in blue
To place on the predicted North American Datum 1983
move the projection lines 7 meters north and
9 meters east as shown by dashed corner ticks
There may be private inholdings within the boundaries of
the National or State reservations shown on this map



ROAD CLASSIFICATION
Secondary highway, all weather, Light-duty road, all weather,
hard surface
Unimproved road, fair or dry
weather
State Route
ALVIN, WIS.
N4552.5—W8845.7.5
1970
AMS 3275 IV NE—SERIES V861

RETURN TO:
USGS AND HISTORICAL MAP ARCHIVES

Nov 15 1982