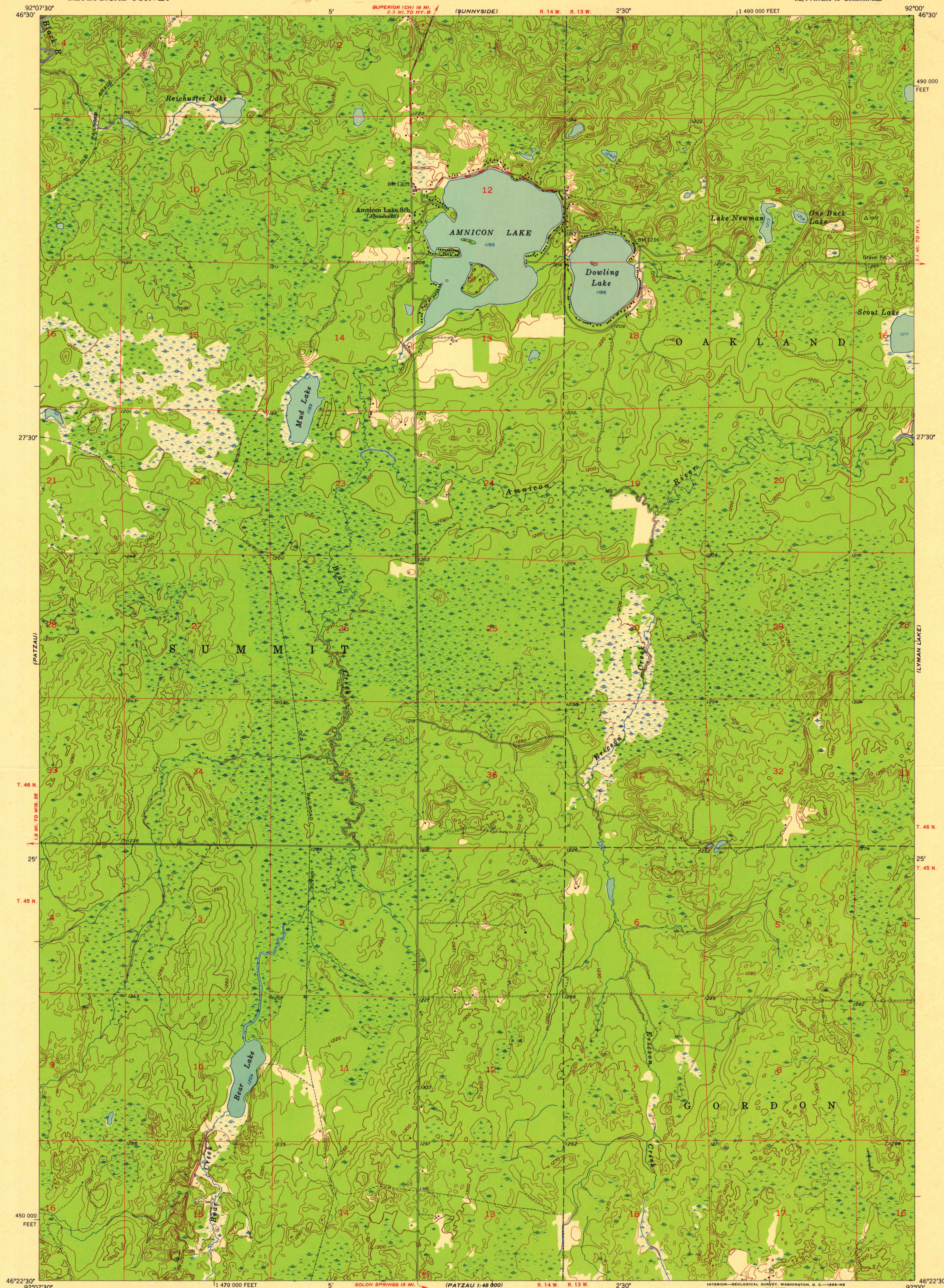
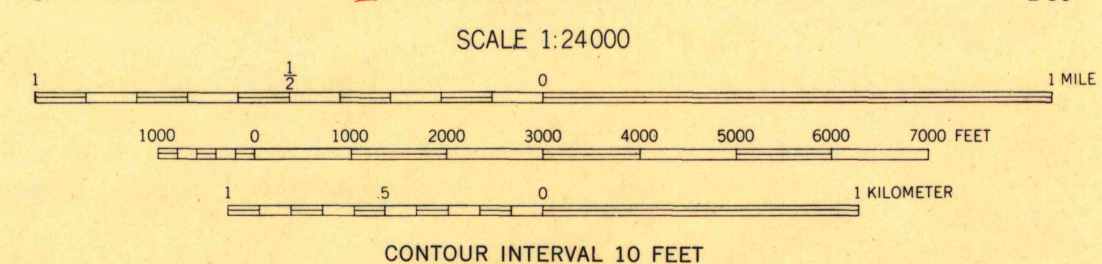


(BOREA)  
92°07'30"  
46°30'

(SOUTH RANGE)  
92°00'  
46°30'



Mapped, edited, and published by the Geological Survey  
Control by USGS and USC&GS  
Topography from aerial photographs by Kelsh plotter  
Aerial photographs taken 1952-1953. Field check 1954  
Polyconic projection. 1927 North American datum  
10,000-foot grid based on Wisconsin coordinate system,  
north zone



TRUE NORTH  
MAGNETIC NORTH  
APPROXIMATE MEAN  
DECLINATION, 1954

ROAD CLASSIFICATION  
Heavy-duty 4 LANE 16 LANE Light-duty  
Medium-duty 4 LANE 16 LANE Unimproved dirt  
U. S. Route State Route



THIS MAP COMPLIES WITH NATIONAL MAP ACCURACY STANDARDS  
FOR SALE BY U. S. GEOLOGICAL SURVEY, WASHINGTON 25, D. C.  
AND BY THE WISCONSIN GEOLOGICAL AND NATURAL HISTORY SURVEY, MADISON 6, WISCONSIN  
A FOLDER DESCRIBING TOPOGRAPHIC MAPS AND SYMBOLS IS AVAILABLE ON REQUEST

AMNICON LAKE, WIS.  
NE/4 PATZAU 15' QUADRANGLE  
N4622.5-W9200/7.5

1954  
FOR LIBRARY USE  
ONLY

UNIVERSITY OF WISCONSIN  
Department of Geography

1954  
copy  
1-1