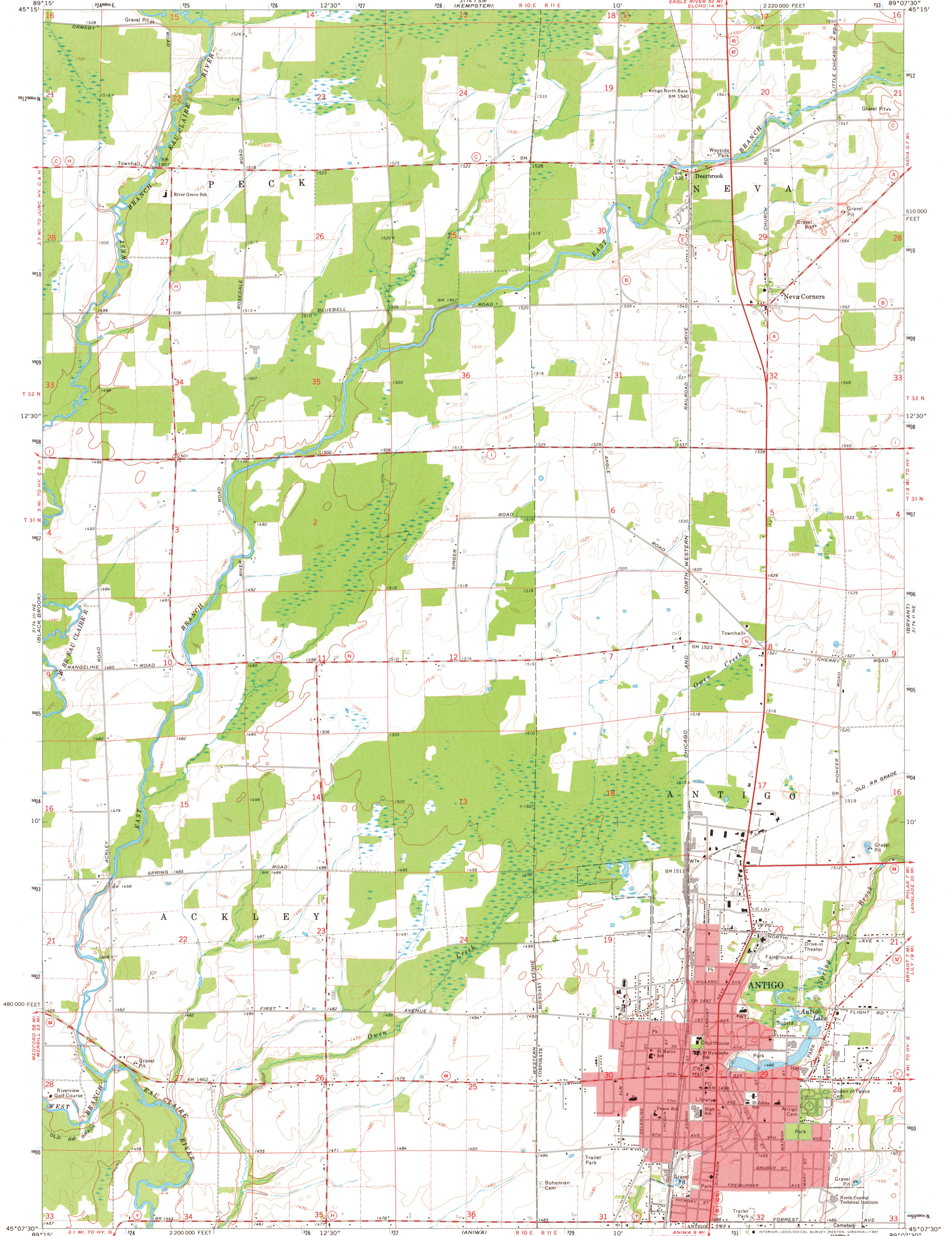
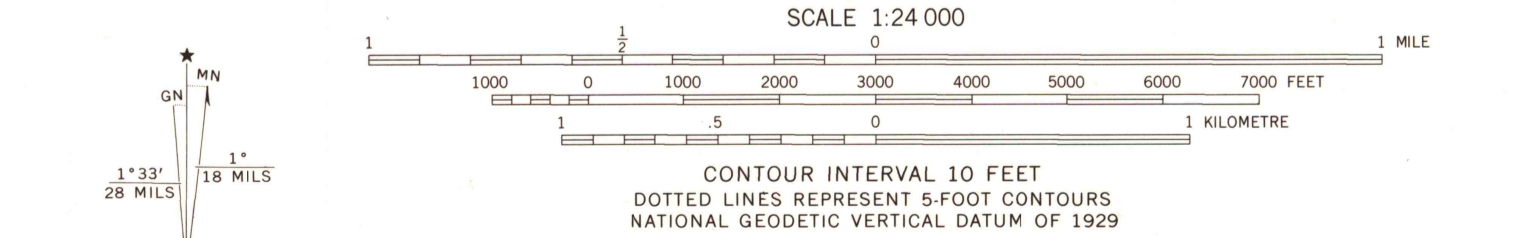


3174 N 9 E  
(GAYLARD)

3174 E  
(PEARSON)



Mapped, edited, and published by the Geological Survey  
Control by USGS and NOS/NOAA  
Topography by photogrammetric methods from aerial  
photographs taken 1972. Field checked 1973  
Projection and 10,000-foot grid ticks: Wisconsin coordinate  
system, central zone (Lambert conformal conic)  
1000-metre Universal Transverse Mercator grid ticks,  
zone 16, shown in blue. 1927 North American datum  
Red tint indicates area in which only landmark buildings are shown  
Fine red dashed lines indicate selected fence and field lines where  
generally visible on aerial photographs. This information is unchecked  
To place on the predicted North American Datum 1983  
move the projection lines 5 meters north and  
9 meters east as shown by dashed corner ticks



ROAD CLASSIFICATION

Primary highway, hard surface	Light-duty road, hard or improved surface
Secondary highway, hard surface	Unimproved road
Interstate Route	U.S. Route
	State Route

ANTIGO, WIS.  
N4507.5—W8907.5/7.5  
1973  
AMS 3174 II NW—SERIES V861

USGS  
Historical File  
National Mapping Div.  
MAR 17 1981  
3600