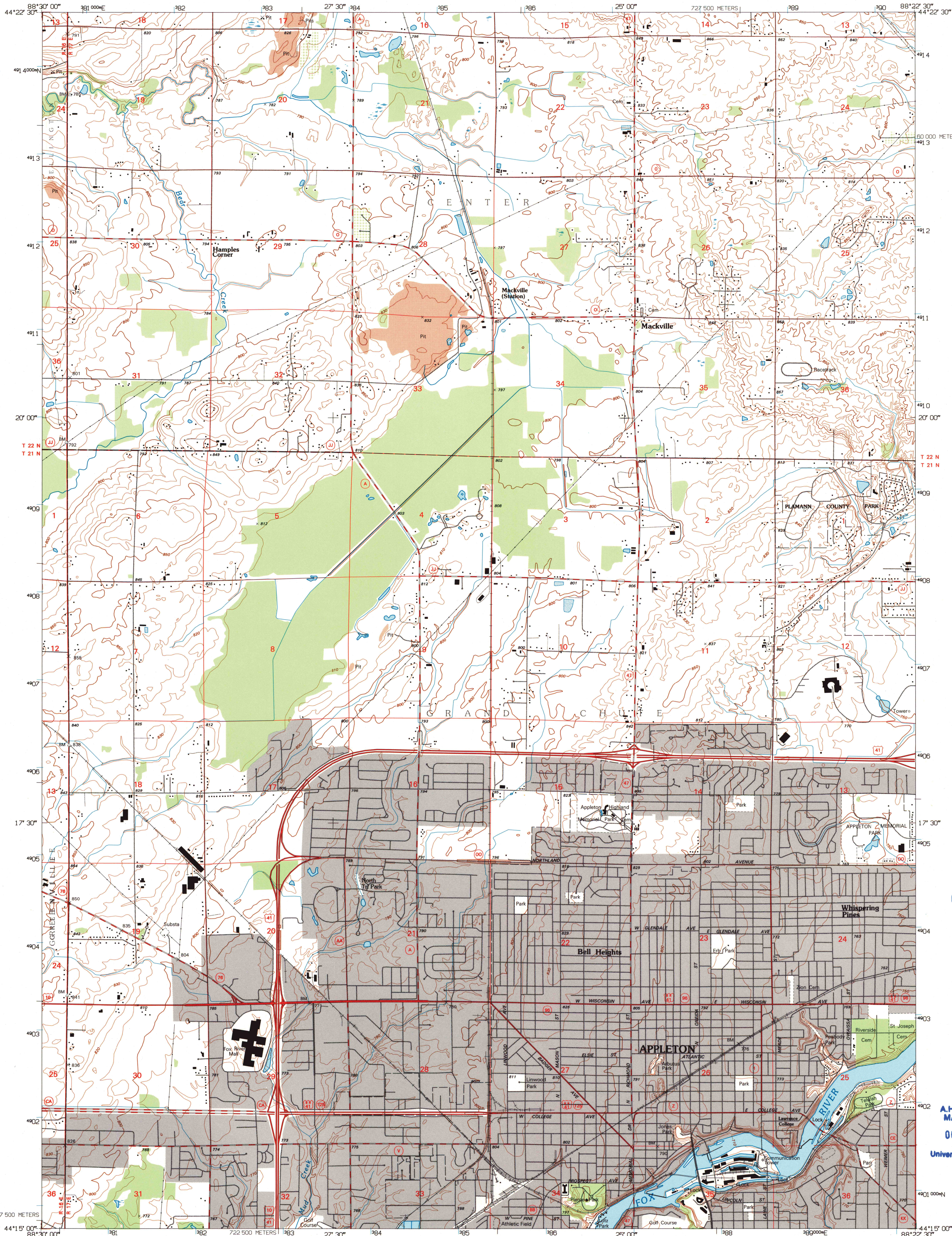


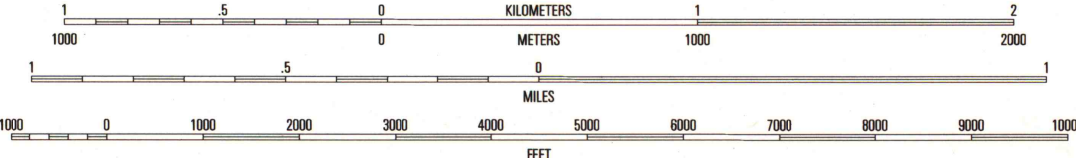
UNITED STATES
DEPARTMENT OF THE INTERIOR
GEOLOGICAL SURVEY

APPLETON QUADRANGLE
WISCONSIN
7.5-MINUTE SERIES (TOPOGRAPHIC)



Produced by the United States Geological Survey
Compiled from imagery dated 1993. Revised from imagery dated 1992. PLSS and survey control current as of 1995. Contours and elevations current as of 1995. Map edited 1995.
North American Datum of 1983 (NAD 83). Projection and blue 1000-meter ticks: Universal Transverse Mercator, zone 16. 2500-meter ticks: Wisconsin Coordinate System of 1983 (central zone).
North American Datum of 1927 (NAD 27) is shown by dashed corner ticks. The values of the shift between NAD 83 and NAD 27 for 7.5-minute intersections are obtainable from National Geodetic Survey NADCON software.

UTM GRID AND 1995 MAGNETIC NORTH DECLINATION AT CENTER OF SHEET



CONTOUR INTERVAL 10 FEET
NATIONAL GEODETIC VERTICAL DATUM OF 1929

THIS MAP COMPLIES WITH NATIONAL MAP ACCURACY STANDARDS
FOR SALE BY U.S. GEOLOGICAL SURVEY
DENVER, COLORADO 80225, OR RESTON, VIRGINIA 22092
AND WISCONSIN GEOLOGICAL AND NATURAL HISTORY SURVEY, MADISON, WISCONSIN 53706
A FOLDER DESCRIBING TOPOGRAPHIC MAPS AND SYMBOLS IS AVAILABLE ON REQUEST



QUADRANGLE LOCATION

1	2	3
4	5	6
7	8	

- 1 Shiloh
- 2 Black Creek
- 3 Freedom
- 4 Greenville
- 5 Kaukauna
- 6 Oaksho NE
- 7 Neshah
- 8 Sherwood

ROAD CLASSIFICATION
Primary highway Light-duty road, hard or hard surface
Secondary highway Unimproved road
Interstate Route U.S. Route State Route

APPLETON, WI
44088-C4-TP-024
1992

DMA 3372 IV SW-SERIES V861

U.S. Regional
Repository Copy
DO NOT DISCARD

A.H. ROBINSON
MAP LIBRARY
OCT 9 1996
University of Wisconsin
Madison

1995
COPY
1-1

