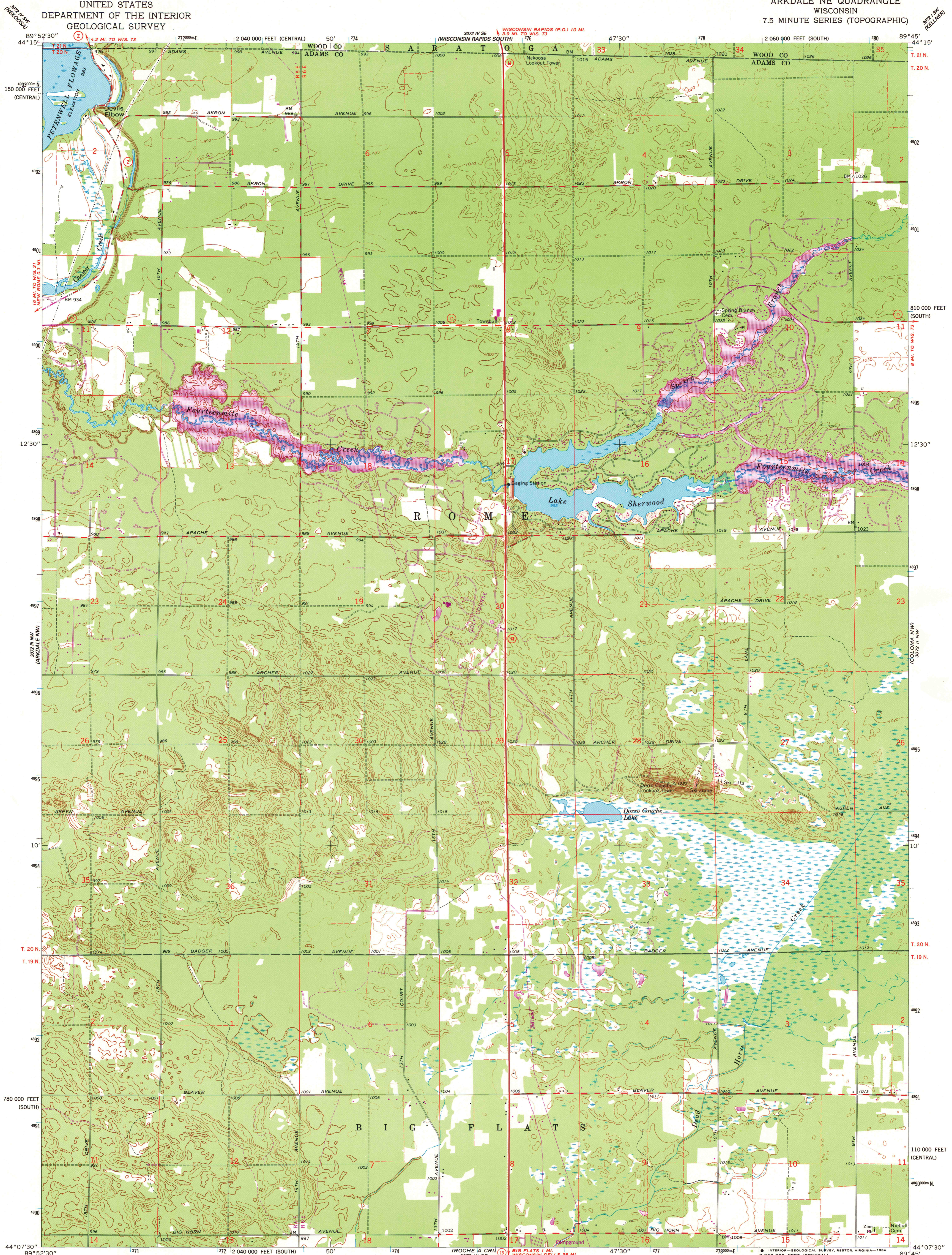
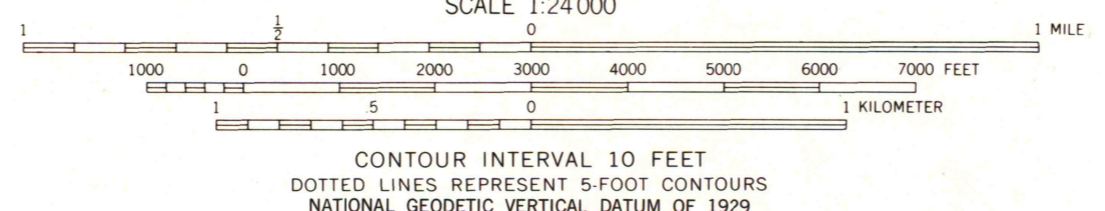
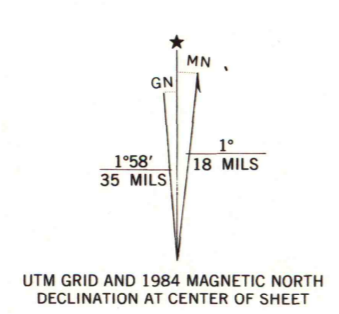


UNITED STATES
DEPARTMENT OF THE INTERIOR
GEOLOGICAL SURVEY

ARKDALE NE QUADRANGLE
WISCONSIN
7.5 MINUTE SERIES (TOPOGRAPHIC)



Mapped, edited, and published by the Geological Survey
Control by USGS and USC&GS
Topography by photogrammetric methods from aerial
photographs taken 1964. Field checked 1967
Projection: Wisconsin coordinate system, south zone
(Lambert conformal conic)
10,000-foot grid ticks based on Wisconsin coordinate
system, south and central zones
1000-meter Universal Transverse Mercator grid, zone 16
1927 North American Datum
To place on the predicted North American Datum 1983,
move the projection lines 5 meters north and
11 meters east as shown by dashed corner ticks
Revisions shown in purple compiled from aerial photographs taken 1982 and
other sources. This information not field checked. Map edited 1984



ROAD CLASSIFICATION

Heavy-duty	Light-duty
Medium-duty	Unimproved dirt
State Route	

CONTOUR INTERVAL 10 FEET
DOTTED LINES REPRESENT 5-FOOT CONTOURS
NATIONAL GEODETIC VERTICAL DATUM OF 1929

ARKDALE NE, WIS.

44089-B7-TF-024

1967
PHOTOREVISED 1984
DMA 3072 III NE—SERIES V861

U.S. Regional
Depository Copy
DO NOT DISCARD

A.H. ROBINSON
MAP LIBRARY
MAY 31 1985
University of Wisconsin
Madison

1984
Copy
1-1