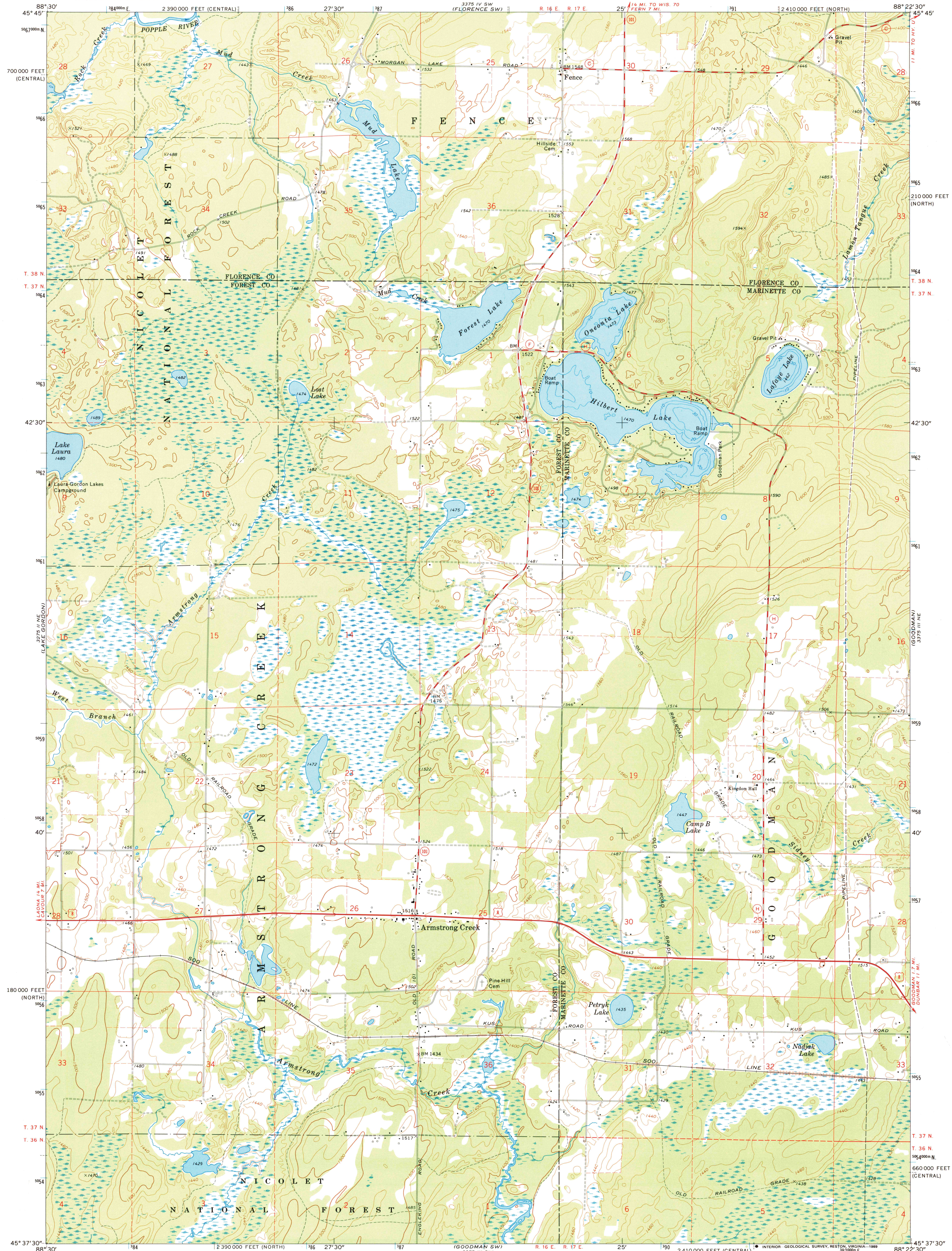


UNITED STATES
DEPARTMENT OF THE INTERIOR
GEOLOGICAL SURVEY

ARMSTRONG CREEK QUADRANGLE
WISCONSIN
7.5 MINUTE SERIES (TOPOGRAPHIC)
NW 1/4 GOODMAN 15' QUADRANGLE



Mapped, edited, and published by the Geological Survey

Control by USGS and USC&GS

Topography by photogrammetric methods from aerial photographs taken 1971. Field checked 1972

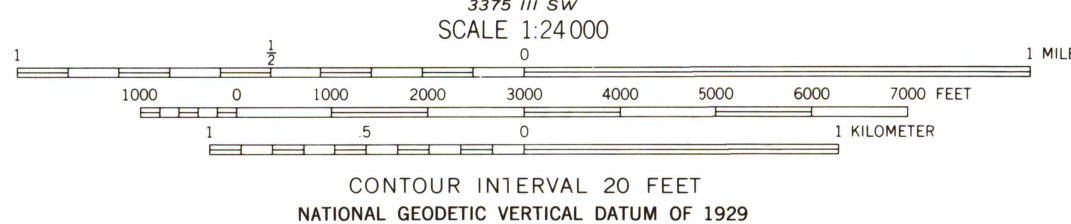
Hydrography compiled from information furnished by Wisconsin Department of Natural Resources

Projection: Wisconsin coordinate system, north zone (Lambert conformal conic)

10,000-foot grid ticks based on Wisconsin coordinate system, north and central zones

1000-meter Universal Transverse Mercator grid ticks, zone 16, shown in blue. 1927 North American datum

Fine red dashed lines indicate selected fence and field lines where generally visible on aerial photographs. This information is unchecked



ROAD CLASSIFICATION	
Primary highway, hard surface	Light-duty road, hard or improved surface
Secondary highway, hard surface	Unimproved road
Interstate Route	U. S. Route
	State Route

ARMSTRONG CREEK, WIS.
NW 1/4 GOODMAN 15' QUADRANGLE
45088F4-TF-024



QUADRANGLE LOCATION

To place on the predicted North American Datum 1983, move the projection lines 7 meters north and 9 meters east as shown by dashed corner ticks

Map photomapped 1980
No major culture or drainage changes observed

1972
PHOTOINSPECTED 1980
DMA 3375 III NW-SERIES V861

USGS NMN HISTORICAL MAP
MAR 0 1 1989
REC'D FILE COPY