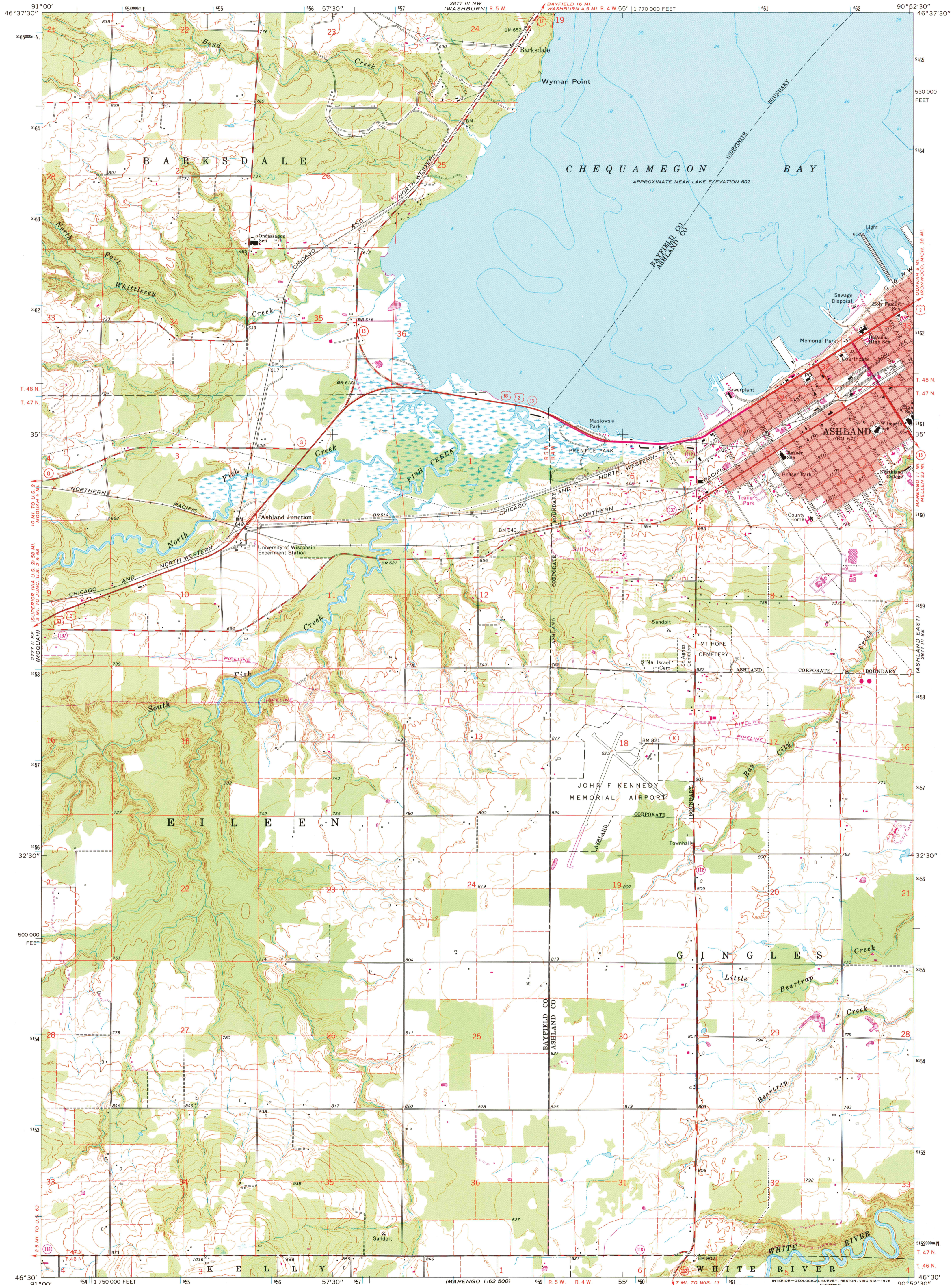
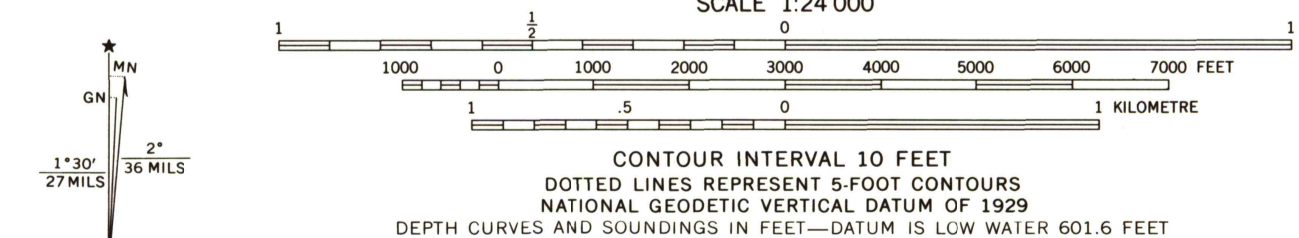


UNITED STATES
DEPARTMENT OF THE INTERIOR
GEOLOGICAL SURVEY

ASHLAND WEST QUADRANGLE
WISCONSIN
7.5 MINUTE SERIES (TOPOGRAPHIC)



Mapped, edited, and published by the Geological Survey in cooperation with State of Wisconsin agencies
Control by USGS and USC&GS
Topography by photogrammetric methods from aerial photographs taken 1963. Field checked 1964
Selected hydrographic data compiled from U.S. Lake Survey Chart 964 (1962)
This information is not intended for navigational purposes
Polyconic projection. 1927 North American datum
10,000-foot grid based on Wisconsin coordinate system, north zone - 1000-metre Universal Transverse Mercator grid ticks, zone 15, shown in blue
Red tint indicates area in which only landmark buildings are shown
Fine red dashed lines indicate selected fence and field lines where generally visible on aerial photographs. This information is unchecked



ROAD CLASSIFICATION

Heavy-duty	Light-duty
Medium-duty	Unimproved dirt
U. S. Route	State Route

THIS MAP COMPLIES WITH NATIONAL MAP ACCURACY STANDARDS
FOR SALE BY U.S. GEOLOGICAL SURVEY, DENVER, COLORADO 80225, OR RESTON, VIRGINIA 22092
AND WISCONSIN GEOLOGICAL AND NATURAL HISTORY SURVEY, MADISON, WISCONSIN 53706
A FOLDER DESCRIBING TOPOGRAPHIC MAPS AND SYMBOLS IS AVAILABLE ON REQUEST

Revisions shown in purple compiled from aerial photographs taken 1975. This information not field checked

ASHLAND WEST, WIS.
SW/4 ASHLAND 15' QUADRANGLE
N4630—W9052.5/7.5
1964
PHOTOREVISED 1975
AMS 2877 III SW—SERIES V861

USGS AND HISTORICAL
MAP ARCHIVES
JAN 29 1996
REC'D FILE COPY

