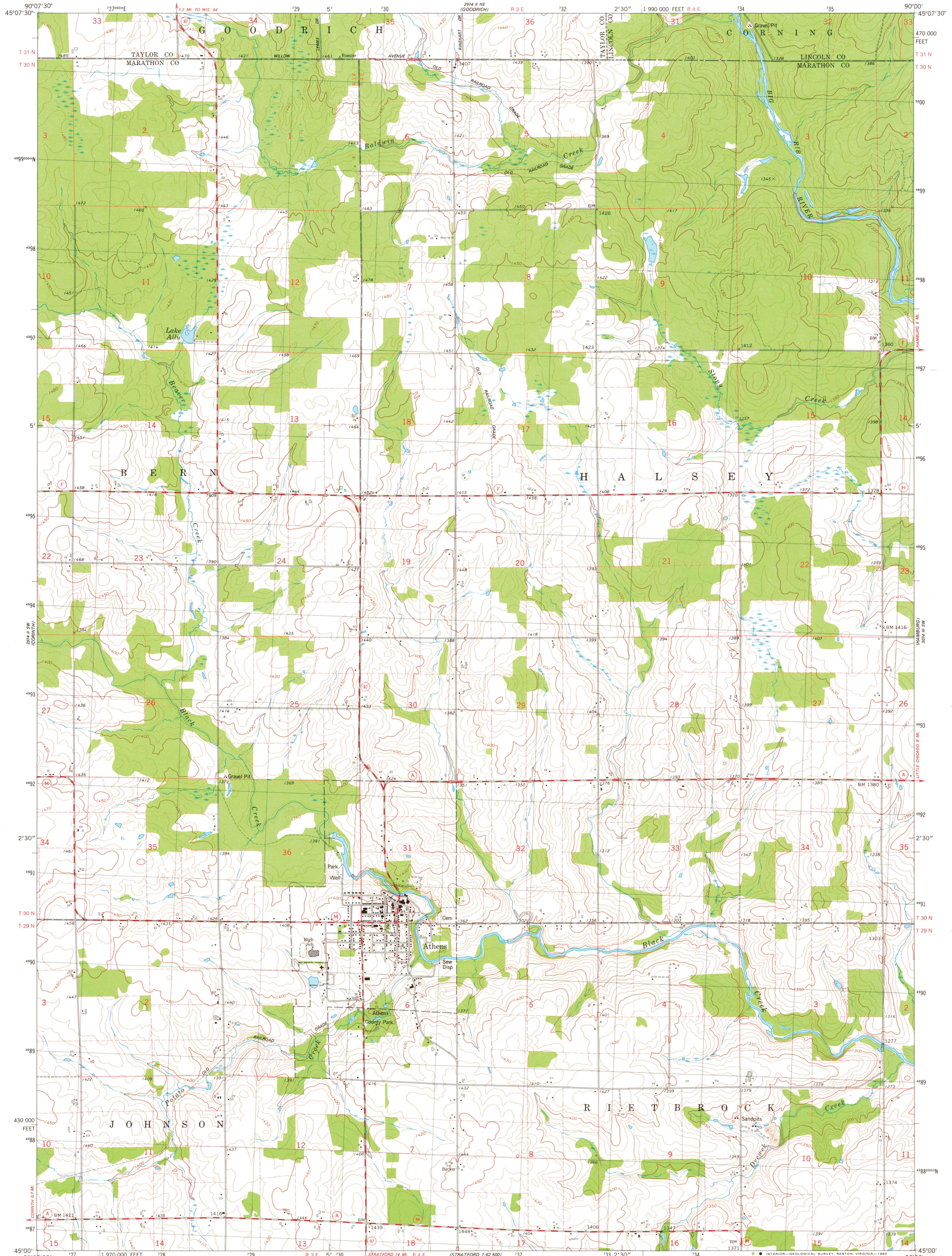
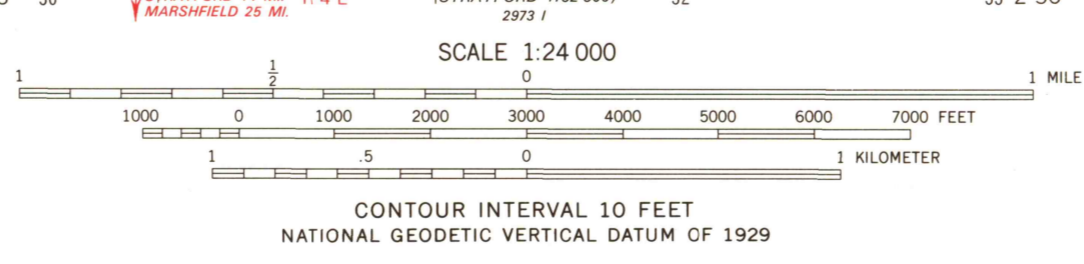
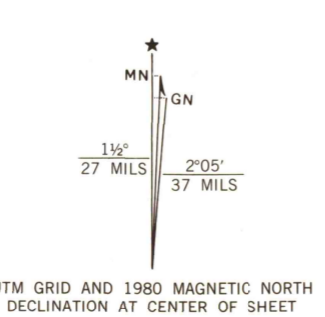


UNITED STATES
DEPARTMENT OF THE INTERIOR
GEOLOGICAL SURVEY

ATHENS QUADRANGLE
WISCONSIN
7.5 MINUTE SERIES (TOPOGRAPHIC)



Mapped, edited, and published by the Geological Survey
Control by USGS and NOS/NOAA
Topography by photogrammetric methods from aerial photographs taken 1974. Field checked 1975. Map edited 1980
Projection and 10,000-foot grid ticks: Wisconsin coordinate system, central zone (Lambert conformal conic)
1000-meter Universal Transverse Mercator grid, zone 15 1927 North American Datum
To place on the predicted North American Datum 1983 move the projection lines 6 meters north and 11 meters east as shown by dashed corner ticks
Fine red dashed lines indicate selected fence and field lines where generally visible on aerial photographs
This information is unchecked



CONTOUR INTERVAL 10 FEET
NATIONAL GEODETIC VERTICAL DATUM OF 1929



ROAD CLASSIFICATION

Primary highway, hard surface	Light-duty road, hard or improved surface
Secondary highway, hard surface	Unimproved road
Interstate Route	U. S. Route
	State Route

USGS
Historical File
Topographic Division

ATHENS, WIS.
SE/4 ATHENS 15' QUADRANGLE
N4500-W9000/7.5

1980

DMA 2974 II SE-SERIES V861

OCT - 2 1980
1700