

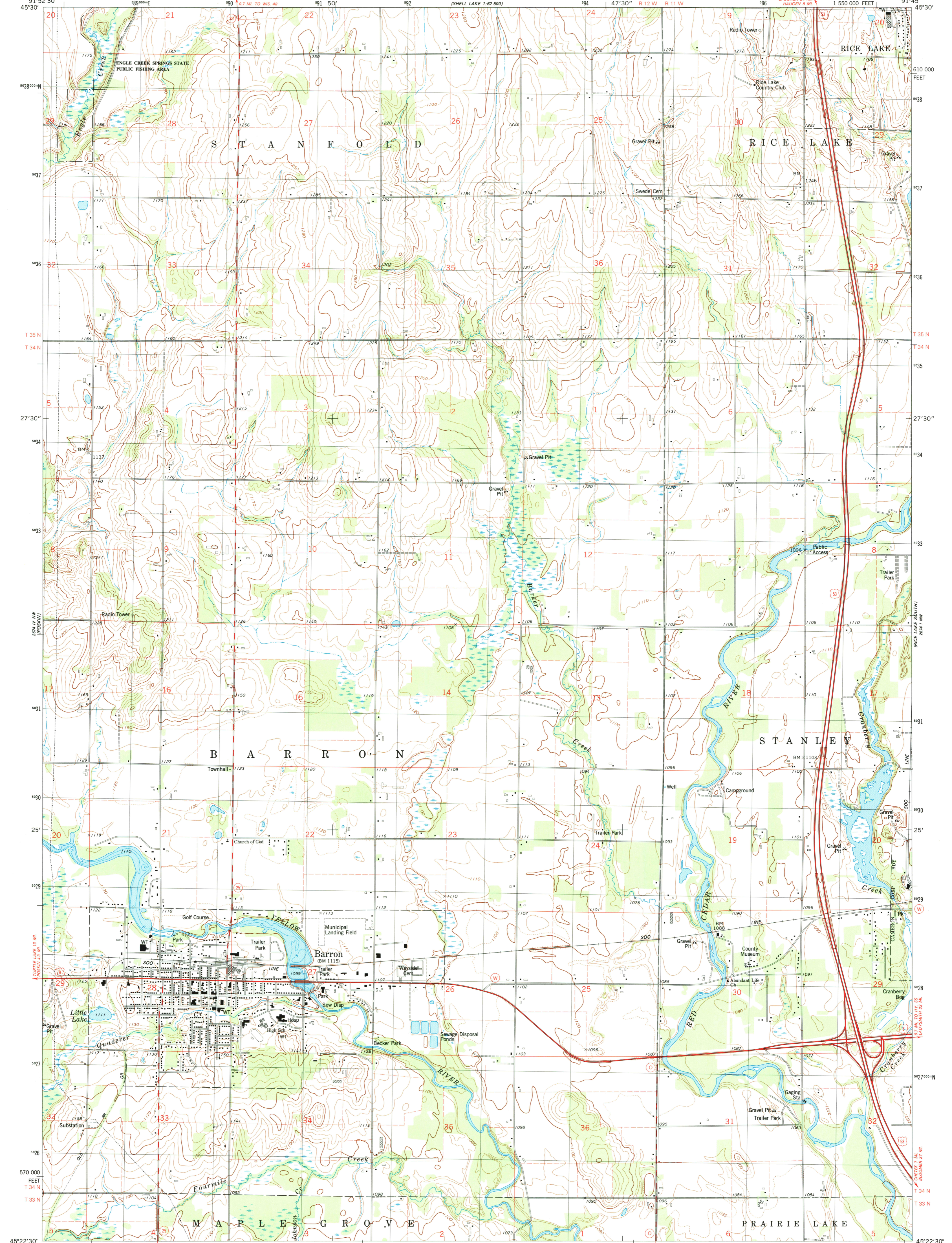
1:25000
1:25000
1:25000

UNITED STATES
DEPARTMENT OF THE INTERIOR
GEOLOGICAL SURVEY

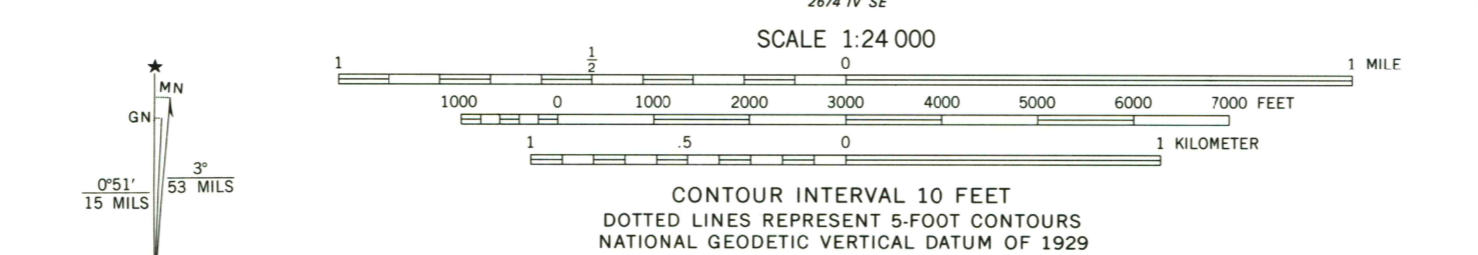
STATE OF WISCONSIN
DIVISION OF HIGHWAYS
GEOLOGICAL AND NATURAL HISTORY SURVEY

BARRON QUADRANGLE
WISCONSIN-BARRON CO.
7.5 MINUTE SERIES (TOPOGRAPHIC)
NE 4 BARRON 15' QUADRANGLE

1:25000
1:25000
1:25000



Mapped, edited, and published by the Geological Survey in cooperation with the Wisconsin Division of Highways and Wisconsin Geological and Natural History Survey
Control by USGS and NOS/NOAA
Topography by photogrammetric methods from aerial photographs taken 1975. Field checked 1976. Map edited 1978
Hydrography compiled from information furnished by Wisconsin Department of Natural Resources
Projection and 10,000-foot grid ticks: Wisconsin coordinate system, central zone (Lambert conformal conic)
1000-meter Universal Transverse Mercator grid, zone 15 1927 North American datum
There may be private inholdings within the boundaries of the National or State reservations shown on this map



ROAD CLASSIFICATION
Primary highway, hard surface
Secondary highway, hard surface
Light-duty road, hard or improved surface
Unimproved road
Interstate Route
U. S. Route
State Route

UTM GRID AND 1978 MAGNETIC NORTH DECLINATION AT CENTER OF SHEET
THIS MAP COMPLIES WITH NATIONAL MAP ACCURACY STANDARDS FOR SALE BY U.S. GEOLOGICAL SURVEY, DENVER, COLORADO 80225, OR RESTON, VIRGINIA 22092 AND WISCONSIN GEOLOGICAL AND NATURAL HISTORY SURVEY, MADISON, WISCONSIN 53706
A FOLDER DESCRIBING TOPOGRAPHIC MAPS AND SYMBOLS IS AVAILABLE ON REQUEST
BARRON, WIS.
NE 4 BARRON 15' QUADRANGLE
N4522.5-W9145/7.5
1978
AMS 2674 IV NE-SERIES V861