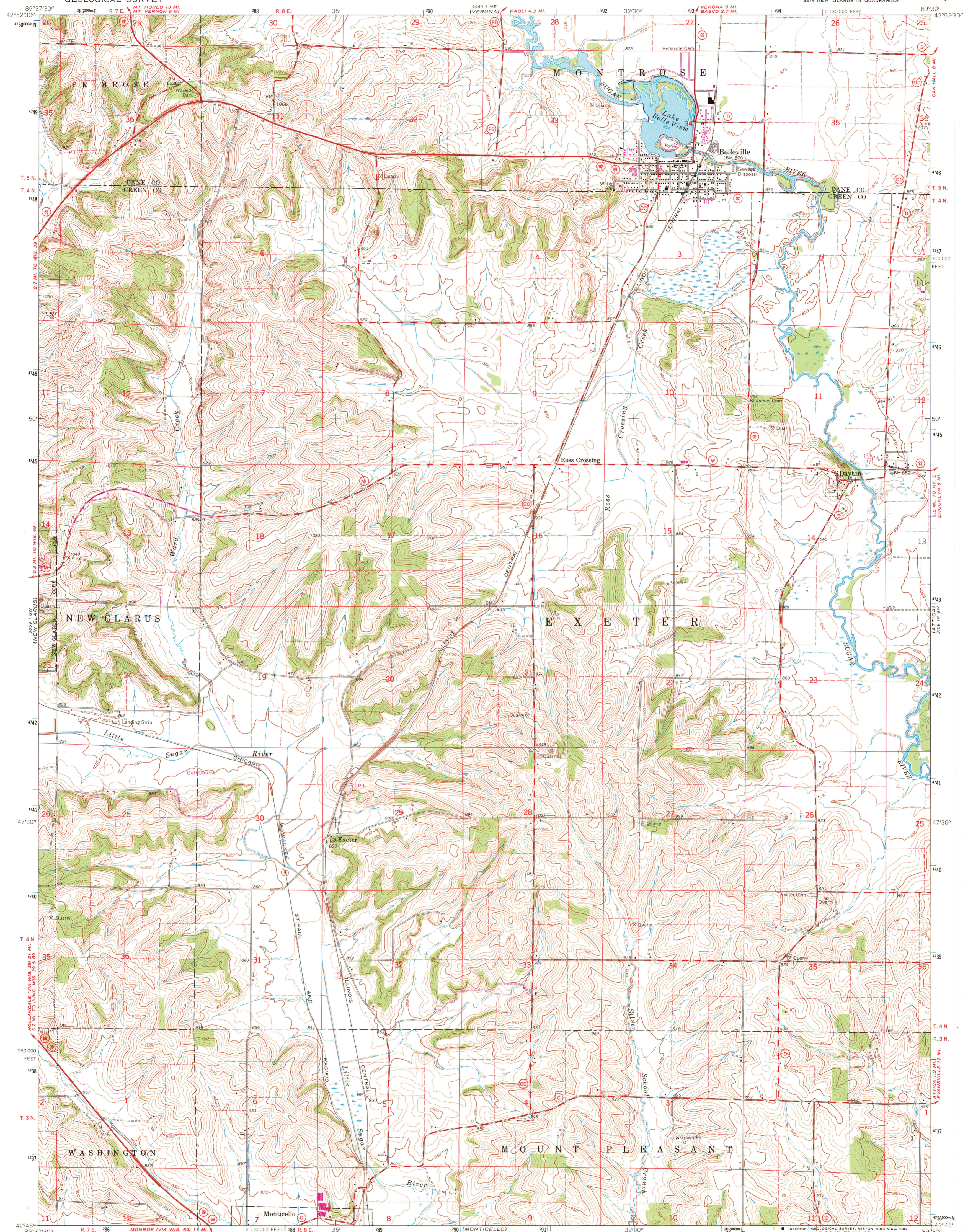


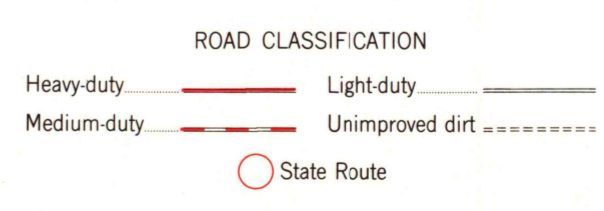
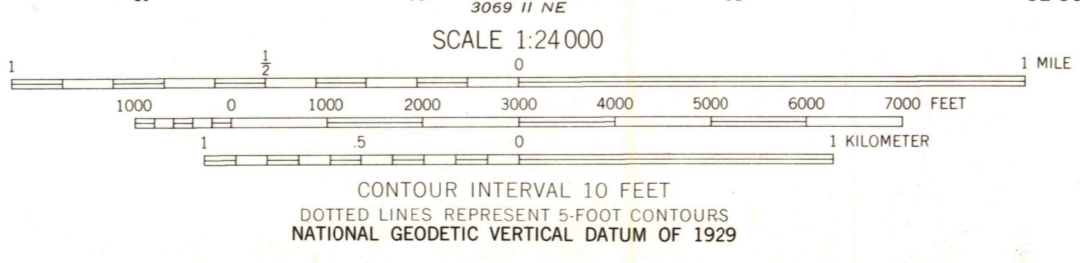
UNITED STATES
DEPARTMENT OF THE INTERIOR
GEOLOGICAL SURVEY

BELLEVILLE QUADRANGLE
WISCONSIN
7.5 MINUTE SERIES (TOPOGRAPHIC)
SE/4 NEW GLARUS 19 QUADRANGLE



Mapped, edited, and published by the Geological Survey in cooperation with State of Wisconsin agencies

Control by USGS and US&GS
Topography by photogrammetric methods from aerial photographs taken 1961. Field checked 1962
Polyconic projection. 1927 North American datum
10,000-foot grid based on Wisconsin coordinate system, south zone
1000-meter Universal Transverse Mercator grid ticks, zone 16, shown in blue
Fine red dashed lines indicate selected fence and field lines where generally visible on aerial photographs. This information is unchecked
Revisions shown in purple compiled from aerial photographs taken 1971. This information not field checked
Map photinspected 1981
No major culture or drainage changes observed



THIS MAP COMPLIES WITH NATIONAL MAP ACCURACY STANDARDS
FOR SALE BY U.S. GEOLOGICAL SURVEY, RESTON, VIRGINIA 22092
AND WISCONSIN GEOLOGICAL AND NATURAL HISTORY SURVEY, MADISON, WISCONSIN 53706
A FOLDER DESCRIBING TOPOGRAPHIC MAPS AND SYMBOLS IS AVAILABLE ON REQUEST

QUADRANGLE LOCATION
To place on the predicted North American Datum 1983
move the projection lines 4 meters north and
10 meters east as shown by dashed corner ticks

BELLEVILLE, WIS.
SE/4 NEW GLARUS 19 QUADRANGLE
N4245-W8930/7.5
1962
PHOTOREVISED 1971
AMS 3069 1 SE-SERIES V861
PHOTOINSPECTED 1981

RETURN TO:
USGS AND HISTORICAL MAP ARCHIVES

JAN 13 1983

2340