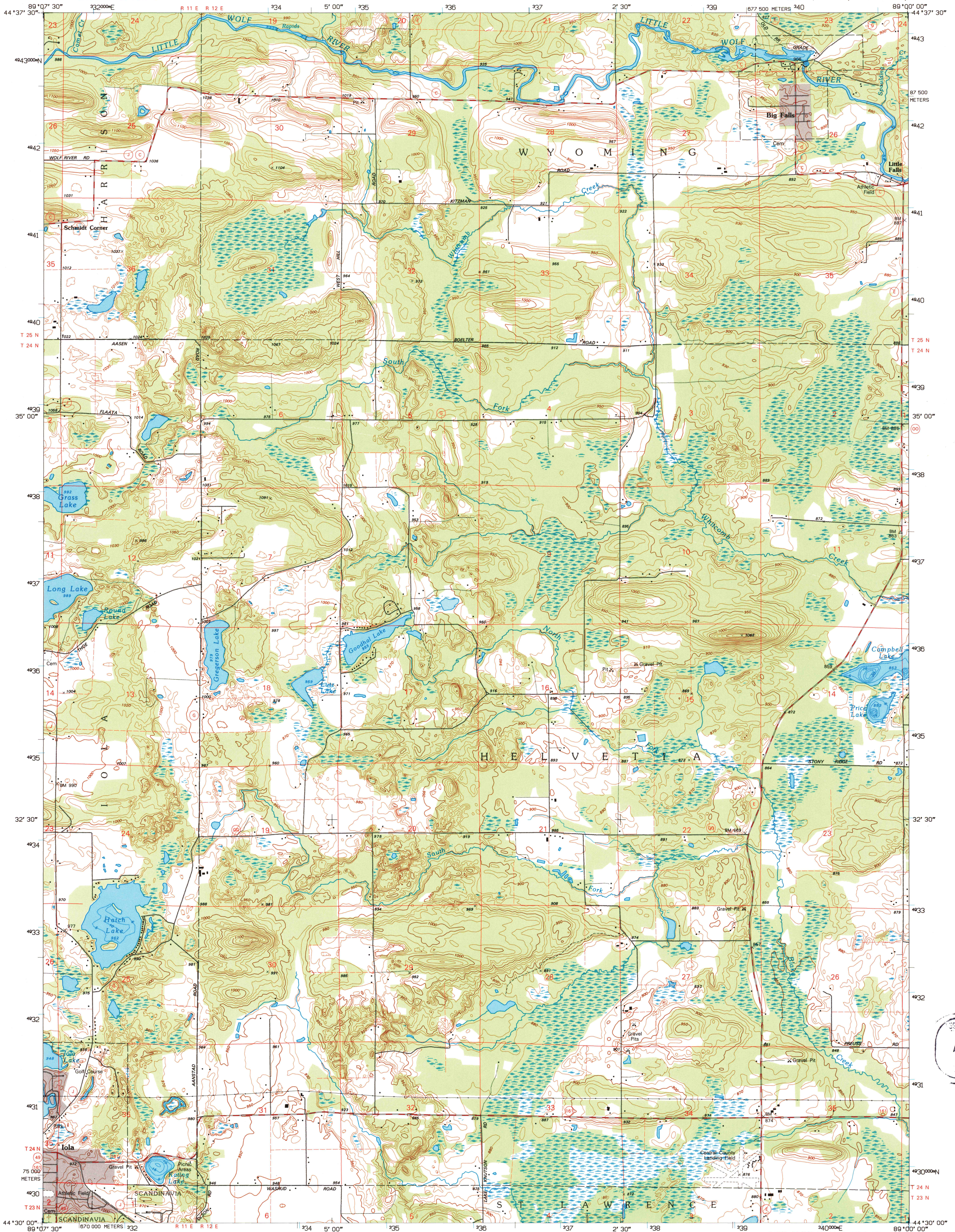


UNITED STATES
DEPARTMENT OF THE INTERIOR
GEOLOGICAL SURVEY

BIG FALLS QUADRANGLE
WISCONSIN-WAUPACA CO.
7.5-MINUTE SERIES (TOPOGRAPHIC)



U.S. GEOLOGICAL SURVEY
HISTORICAL ARCHIVES
APR 16 1996
C'D FILE COPY

Produced by the United States Geological Survey
Compiled by photogrammetric methods from imagery dated 1968
Field checked 1970. Revised in cooperation with State
of Wisconsin agencies from imagery dated 1992. PLSS and
survey control current as of 1970. Map edited 1996
Contours not revised
Hydrography compiled from information furnished by
Wisconsin Department of Natural Resources
North American Datum of 1983 (NAD 83). Projection and
blue 1000-meter ticks; Universal Transverse Mercator, zone 16
2 500-meter ticks; Wisconsin Coordinate System of 1983 (central zone)
North American Datum of 1927 (NAD 27) is shown by dashed
corner ticks. The values of the shift between NAD 83 and NAD 27
for 7.5-minute intersections are obtainable from National Geodetic
Survey NADCON software

1" = 27' 26" MILES
UTM GRID AND 1996 MAGNETIC NORTH
DECLINATION AT CENTER OF SHEET

SCALE 1:24 000
CONTOUR INTERVAL 10 FEET
NATIONAL GEODETIC VERTICAL DATUM OF 1929
THIS MAP COMPLIES WITH NATIONAL MAP ACCURACY STANDARDS
FOR SALE BY U.S. GEOLOGICAL SURVEY
DENVER, COLORADO 80225, OR RESTON, VIRGINIA 22092
AND WISCONSIN GEOLOGICAL AND NATURAL HISTORY SURVEY, MADISON, WISCONSIN 53706
A FOLDER DESCRIBING TOPOGRAPHIC MAPS AND SYMBOLS IS AVAILABLE ON REQUEST



QUADRANGLE LOCATION

1	2	3
4	5	6
7	8	

ROAD CLASSIFICATION
Primary highway
hard surface
Secondary highway
hard surface
Unimproved road
Interstate Route
U.S. Route
State Route

BIG FALLS, WI
44089-E1-TF-024
1992

DMA 3173 II SE-SERIES V681

ISBN 0-607-84742-5
9 780607 847420