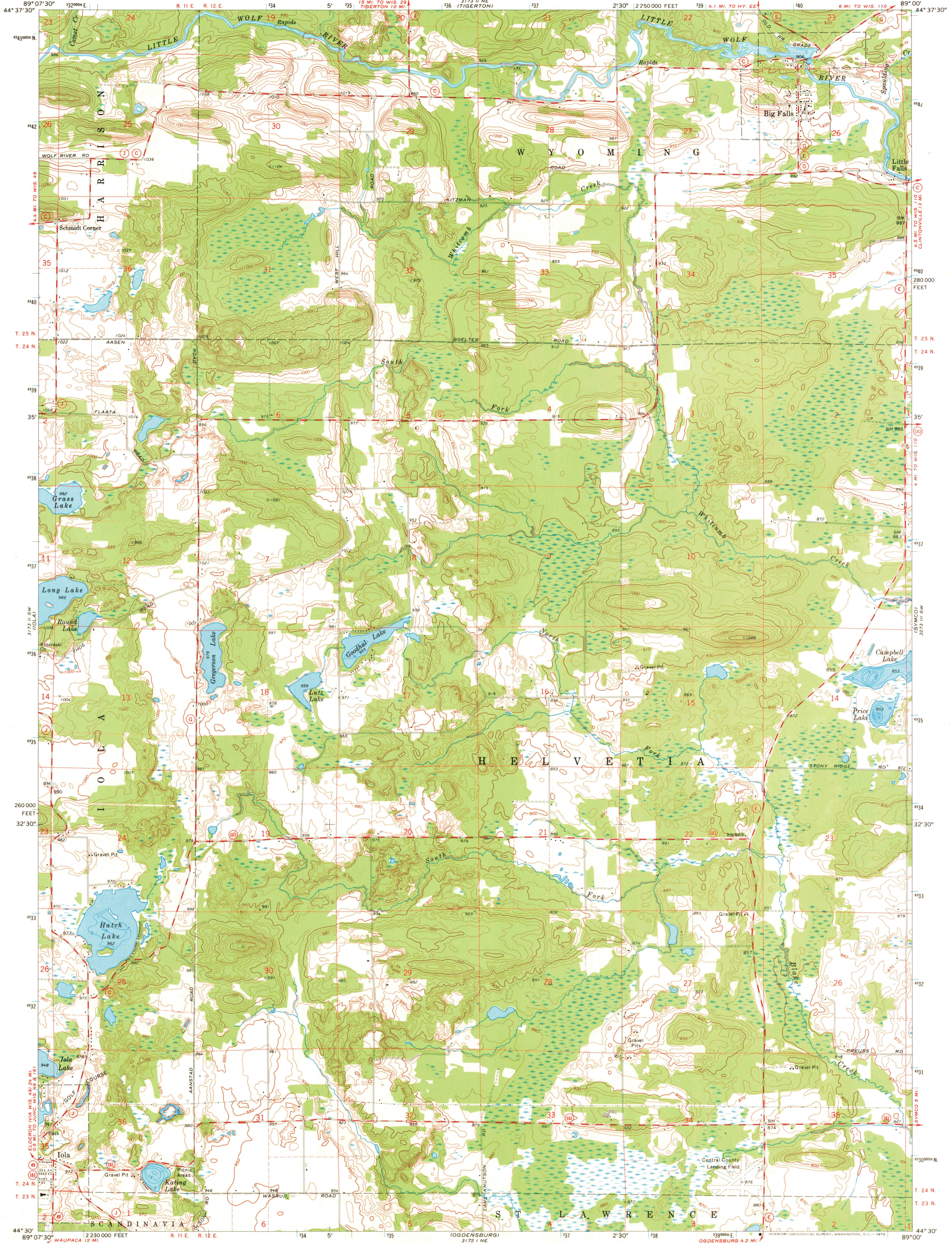


UNITED STATES
DEPARTMENT OF THE INTERIOR
GEOLOGICAL SURVEY

BIG FALLS QUADRANGLE
WISCONSIN-WAUPACA CO.
7.5 MINUTE SERIES (TOPOGRAPHIC)
SE 1/4 TIGERTON 15' QUADRANGLE



Mapped, edited, and published by the Geological Survey

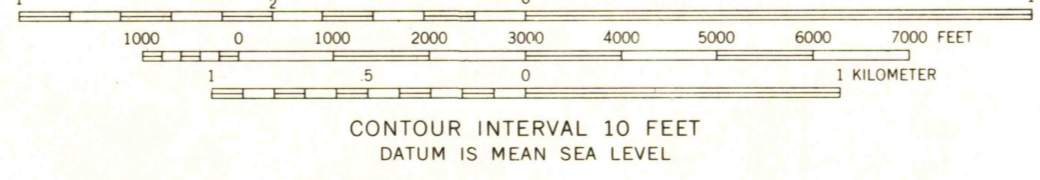
Control by USGS and USC&GS

Topography by photogrammetric methods from aerial photographs taken 1968. Field checked 1970

Depth curves compiled from charts furnished by Wisconsin Department of Natural Resources

Polyconic projection, 1927 North American datum, 10,000-foot grid based on Wisconsin coordinate system, central zone, 1000-meter Universal Transverse Mercator grid ticks, zone 16, shown in blue

Fine red dashed lines indicate selected fence and field lines where generally visible on aerial photographs. This information is unchecked



CONTOUR INTERVAL 10 FEET
DATUM IS MEAN SEA LEVEL

ROAD CLASSIFICATION

Primary highway, hard surface	Light-duty road, hard or improved surface
Secondary highway, hard surface	Unimproved road
Interstate Route	U. S. Route
	State Route



QUADRANGLE LOCATION

BIG FALLS, WIS.
SE 1/4 TIGERTON 15' QUADRANGLE
N4430-W8900/7.5
1970

AMS 3173 II SE-SERIES V861

MAY 14 1973

3020