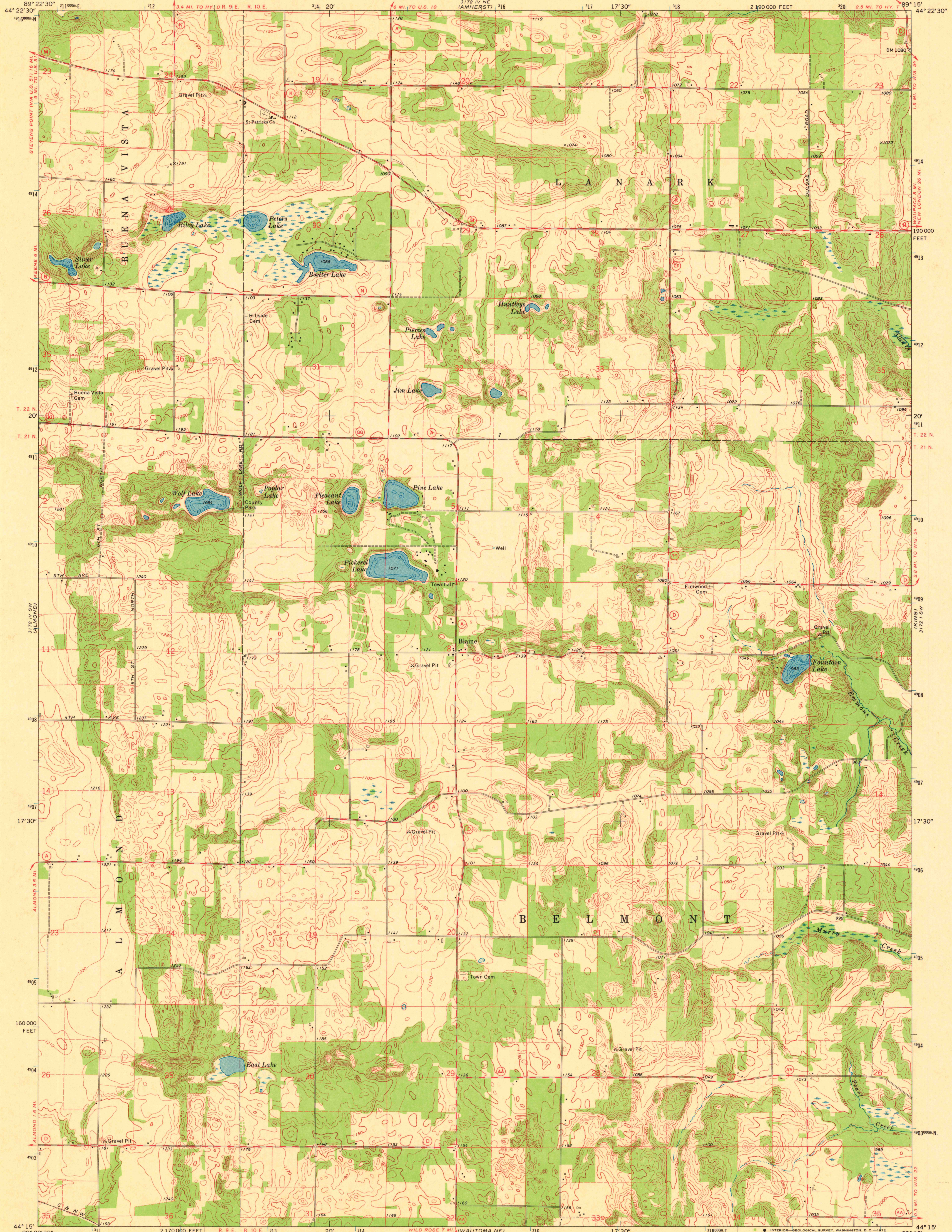


UNITED STATES  
DEPARTMENT OF THE INTERIOR  
GEOLOGICAL SURVEY

STATE OF WISCONSIN  
STATE HIGHWAY COMMISSION  
GEOLOGICAL AND NATURAL HISTORY SURVEY

BLAINE QUADRANGLE  
WISCONSIN-PORTAGE CO.  
7.5 MINUTE SERIES (TOPOGRAPHIC)  
SE 1/4 AMHERST 15' QUADRANGLE



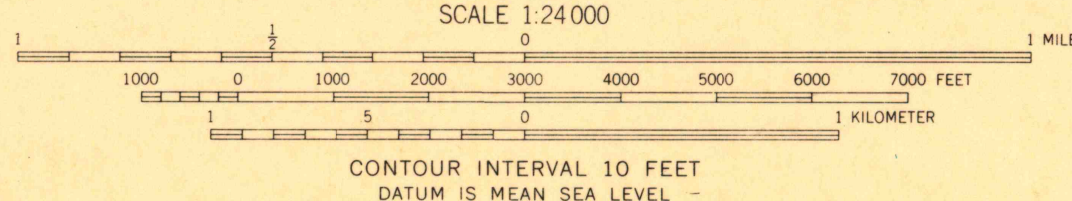
Mapped, edited, and published by the Geological Survey in cooperation with the Wisconsin Highway Commission and Wisconsin Geological and Natural History Survey. Control by USGS and USC&GS.

Topography by photogrammetric methods from aerial photographs taken 1969. Field checked 1969.

Depth curves compiled from charts furnished by Wisconsin Department of Natural Resources.

Polyconic projection. 1927 North American datum. 10,000-foot grid based on Wisconsin coordinate system, central zone. 1000-meter Universal Transverse Mercator grid ticks, zone 16, shown in blue.

Fine red dashed lines indicate selected fence and field lines where generally visible on aerial photographs. This information is unchecked.



ROAD CLASSIFICATION

Secondary highway, all weather, Light-duty road, all weather, hard surface

Unimproved road, fair or dry weather

State Route



USGS  
HISTORICAL FILE  
TOPOGRAPHIC DIVISION

BLAINE, WIS.  
SE 1/4 AMHERST 15' QUADRANGLE  
N4415-W8915/7.5  
1969  
AMS 3172 IV SE-SERIES V861

MAY 20 1972  
2680