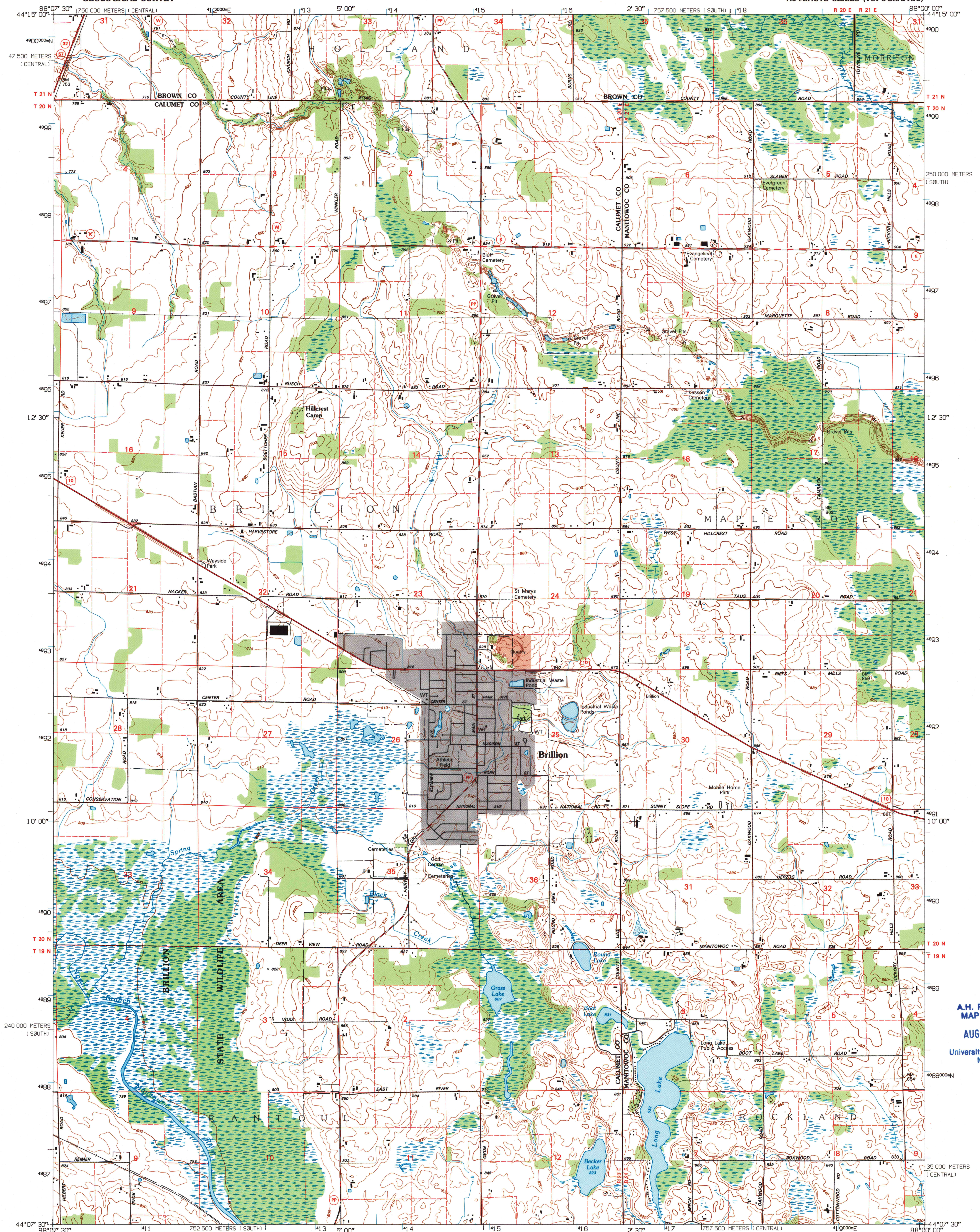
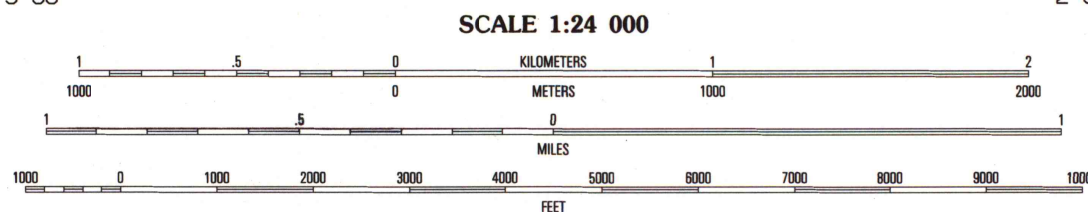
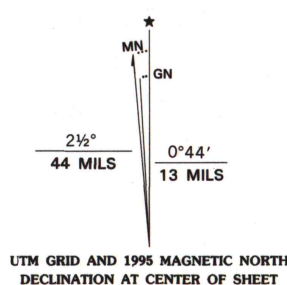


UNITED STATES
DEPARTMENT OF THE INTERIOR
GEOLOGICAL SURVEY

BRILLION QUADRANGLE
WISCONSIN
7.5-MINUTE SERIES (TOPOGRAPHIC)



Produced by the United States Geological Survey
Compiled from imagery dated 1973. Revised from imagery
dated 1992. PLS and survey control current as of 1974.
Contours and elevations current as of 1973. Map edited 1995.
North American Datum of 1983 (NAD 83). Projection and
blue 1000-meter ticks: Universal Transverse Mercator, zone 16
2500-meter ticks: Wisconsin Coordinate System of 1983 (south zone)
North American Datum of 1927 (NAD 27) is shown by dashed
corner ticks. The values of the shift between NAD 83 and NAD 27
for 7.5-minute intersections are obtainable from National Geodetic
Survey NADCON software.
There may be private inholdings within the boundaries of
the National or State reservations shown on this map.



THIS MAP COMPLIES WITH NATIONAL MAP ACCURACY STANDARDS
FOR SALE BY U.S. GEOLOGICAL SURVEY
DENVER, COLORADO 80225, OR RESTON, VIRGINIA 22092
AND WISCONSIN GEOLOGICAL AND NATURAL HISTORY SURVEY, MADISON, WISCONSIN 53706
A FOLDER DESCRIBING TOPOGRAPHIC MAPS AND SYMBOLS IS AVAILABLE ON REQUEST



QUADRANGLE LOCATION

1	2	3	1 Wrightstown
4	5	6	2 Greenleaf
7	8	9	3 Morrison
			4 Hubert
			5 Reedsville
			6 Chilton
			7 Potter
			8 Valders

ADJOINING 7.5 QUADRANGLE NAMES

ROAD CLASSIFICATION
Primary highway
hard surface
Secondary highway
hard surface
Unimproved road
Light-duty road, hard or
improved surface
Unimproved road
Interstate Route U.S. Route State Route

U.S. Regional
Depository Copy
DO NOT DISCARD

BRILLION, WI
44088-B1-TF-024

1992

DMA 3372 II NE-SERIES V861

A.H. ROBINSON
MAP LIBRARY
AUG 14 1996
University of Wisconsin
Madison

1995
copy
1-1

